

BOARD OF DIRECTORS' MEETING

October 15, 2007 – 1:30 p.m.

Canyon County Courthouse

1115 Albany, Caldwell, Idaho



COMPASS
COMMUNITY PLANNING ASSOCIATION
of Southwest Idaho

NOTICE: This packet contains only the documents listed with an asterisk (*) in the agenda. The entire packet, including all attachments is available at: <http://www.compassidaho.org/documents/people/board/agenda10152007.pdf>. The online document requires Acrobat to read it; COMPASS' homepage <http://www.compassidaho.org> contains a free download link if you need a copy. The online document includes bookmarks at the left of the screen that are named to correspond to agenda items that have attachments. Clicking on a bookmark will take you directly to the named document.

****AGENDA****

I. AGENDA ADDITIONS/CHANGES (1:30)

II. OPEN DISCUSSION/ANNOUNCEMENTS (1:35)

III. CONSENT AGENDA (1:40)

Page 3 * A. Approve August 20, 2007, Board Meeting Minutes

Page 6 * B. Receive Approved August 21, 2007, Executive Committee Meeting Minutes

Page 9 * C. Receive Approved July 17, 2007, Executive Committee Meeting Minutes

Page 11 * D. Confirm Approval of Membership Services Request from City of Meridian to Consider Amendment of Communities in Motion and FY2008-2012 Transportation Improvement Program

Page 14 * E. Approve Changes to the FY2008-2012 Transportation Improvement Programs through the Mirroring Process

F. Confirm John Taylor and Dean Gunderson as the Non-Elected Board Alternates for Ada County

IV. ACTION ITEMS

1:45 A. Executive Session – Personnel Matter Tom Dale
[Idaho Code 67-2345 (b)]

Any action taken on the personnel matter will be taken in open session following the Executive Session.

Page 20 2:05 * B. Review Proposal for COMPASS to Facilitate Transportation Project Coordination Charles Trainor

Per Executive Committee direction, staff will review a proposal for COMPASS to facilitate transportation project coordination.

V. INFORMATION/DISCUSSION ITEMS

Page 24 2:15 * A. Review Project Prioritization and Associated Results Mary Ann Waldinger

The Board requested prioritizing specific projects in light of limited funding. Staff will review the prioritization process and results developed during Communities in Motion.

2:35 B. Status Report – Finance Committee A.J. Balukoff
Committee Chairman will update Board on October 11, 2007, Finance Committee meeting.

Page 30 2:40 * C. Workshop – Communities in Motion Performance Monitoring Report

Staff will facilitate a Board Workshop on the Communities in Motion Performance Monitoring Report.

800 S. Industry Way, Ste 100

Meridian, ID 83642

P. 208.855.2558

F. 208.855.2559

www.compassidaho.org

VI. EXECUTIVE DIRECTORS REPORT (3:40)

- A. *Staff Activity Report*
The August and September 2007 staff activity reports can be accessed on the COMPASS website at the address referenced above.
- B. *Status Report – Corridor Studies*
The August and September 2007 monthly status reports on the corridor studies can be accessed on the COMPASS website at the address referenced above.
- C. *Status Report – Current Air Quality Efforts*
The August and September 2007 monthly status reports on air quality issues can be accessed on the COMPASS website at the address referenced above.
- D. *Status Report – Current Transportation Project Information*
The August and September 2007 monthly status reports on current transportation projects and issues can be accessed on the COMPASS website at the address referenced above.
- E. *Status Report – Standing Committees’ Attendance*
The August and September 2007 monthly status reports on standing committees’ attendance can be accessed on the COMPASS website at the address referenced above.
- F. *Status Report – Treasure Valley High Capacity Transit Study*
The August and September 2007 monthly status reports on the Treasure Valley High Capacity Transit Study can be accessed on the COMPASS website at the address referenced above.
- G. *Status Report – Legislative Activities*
The August and September 2007 monthly status reports on COMPASS’ legislative advisor’s activity can be accessed on the COMPASS website at the address referenced above.
- H. *Status Report – FY2009-2013 Transportation Improvement Program Calendar*
The FY2009-2013 Transportation Improvement Program Calendar can be accessed on the COMPASS website at the address referenced above.

VII. ADJOURNMENT (3:45)

*Enclosures

Times are approximate. Agenda is subject to change.

T:\FY08\900 Operations\990 Direct Operations-Maintenance\Board\2008 agendasminutes\agenda10152007.doc



BOARD OF DIRECTORS' MEETING
AUGUST 20, 2007
CANYON COUNTY COURTHOUSE
CALDWELL, IDAHO
****MINUTES****

ATTENDEES:

A.J. Balukoff, Trustee, Independent School District of Boise City
 Keith Bird, Councilman, City of Meridian
 Vernon Bisterfeldt, Councilman, City of Boise
 Alan Brock, Commissioner, Golden Gate/Notus-Parma Highway District
 Elaine Clegg, Councilwoman, City of Boise
 Tom Dale, Mayor, City of Nampa, **Chair**
 John Evans, Mayor, City of Garden City
 Kelli Fairless, Valley Regional Transit
 David Ferdinand, Commissioner, Canyon County
 John Franden, Commissioner, Ada County Highway District, **Chair-Elect**
 Pete Friedman for Tammy de Weerd, Mayor, City of Meridian
 Phil Kushlan, Capital City Development Corporation
 Kathleen Lacey for Dave Bieter, Mayor, City of Boise, **Secretary/Treasurer**
 Gordon Law for Garret Nancolas, Mayor, City of Caldwell, **Vice-Chair**
 Carol McKee, Commissioner, Ada County Highway District
 Nancy Merrill, Mayor, City of Eagle
 Frank McKeever, Mayor, City of Middleton
 Bryce Millar, Commissioner, Nampa Highway District #1
 Steven Rule, Commissioner, Canyon County
 Jerome Scroggins, Commissioner, Canyon Highway District #4
 Matt Stoll, Executive Director, Community Planning Association, Ex officio
 Martin Thorne, Councilman, City of Nampa
 Fred Tilman, Commissioner, Ada County
 Cindy Trail for Russell Duke, Central District Health, Ex officio
 Mike Vuittonet, Trustee, Joint School District #2
 Pete Wagner, Idaho Department of Environmental Quality
 Paul Woods, Commissioner, Ada County
 Rick Yzaguirre, Commissioner, Ada County

MEMBERS ABSENT:

Rebecca Arnold, Commissioner, Ada County Highway District
 Matt Beebe, Commissioner, Canyon County
 Jim Blacker, Councilman, City of Caldwell
 Scott Dowdy, Mayor, City of Kuna
 Scott Gurnsey, Idaho Transportation Department
 Jeff Malmen, Governor's Office, Ex officio
 Anne Horn, Mayor, City of Notus
 James Maguire, Boise State University
 Nathan Mitchell, Mayor, City of Star
 Patrick Rice, Greater Boise Auditorium District, Ex officio
 Margaret Watson, Mayor, City of Parma

800 S. Industry Way, Ste 100

Meridian, ID 83642

P. 208.855.2558

F. 208.855.2559

www.compassidaho.org

OTHERS:

Beth Baird, City of Boise
Nancy Brecks, Community Planning Association
Ryan Christenson, Wilbur Smith and Associates
John Cunningham, Community Planning Association
Matt Edmond, Community Planning Association
Matt Ellsworth, City of Meridian
Miguel Gaddi, HDR
Karen Gallagher, City of Boise
Dean Gunderson, Ada County
Joseph Hummer, North Carolina State University
Don Matson, Community Planning Association
Mike McGown, Department of Environmental Quality
Pete O'Neill, Treasure Valley Air Quality Council
Dale Stephenson, Treasure Valley Air Quality Council
David Thompson, Thompson Transportation
Toni Tisdale, Community Planning Association
Charles Trainor, Community Planning Association
Jeanne Urlezaga, Community Planning Association
Mary Ann Waldinger, Community Planning Association

CALL TO ORDER:

Chair Dale called the meeting to order at 1:55 p.m.

AGENDA ADDITIONS/CHANGES

None.

OPEN DISCUSSION/ANNOUNCEMENTS

None.

CONSENT AGENDA

- A. Approve July 16, 2007, COMPASS Board Meeting Minutes**
- B. Receive Approved June 19, 2007, Executive Committee Meeting Minutes**
- C. Adopt Resolution 13-2007 Approving FY2008 Unified Planning Work Program and Budget**
- D. Adopt Resolution 14-2007 and 15-2007 Approving FY2008-2012 Transportation Improvement Programs**
- E. Approve Access Management Toolbox and Guidebook**

Phil Kushlan moved and Carol McKee seconded approval of the Consent Agenda as presented. Motion passed unanimously.

INFORMATION/DISCUSSION ITEMS

- A. Workshop – High Volume Intersection Design**

Joseph Hummer, PhD, a leading researcher on innovative intersections facilitated a Board workshop on high volume intersection designs.

- B. Status Report – Air Quality**

Mike McGown of the Department of Environmental Quality and Pete O'Neill of the Treasure Valley Air Quality Council provided a Status Report on air quality in the Treasure Valley.

ADJOURNMENT

By unanimous consent, the meeting adjourned at 3:50 p.m.

Dated this 17th day of September 2007.

APPROVED:

BY: _____
Tom Dale, Chair
Community Planning Association

ATTEST:

BY: _____
Matthew J. Stoll, Executive Director
Community Planning Association

T:\FY08\900 Operations\990 Direct Operations-Maintenance\Board\2007agendaminutes\minutes08202007.doc

EXECUTIVE COMMITTEE MEETING MINUTES
AUGUST 21, 2007
COMPASS CONFERENCE ROOM



****MINUTES****

ATTENDEES: Matt Beebe, Commissioner, Canyon County
 Dave Bieter, Mayor, City of Boise, **Secretary/Treasurer**
 Tom Dale, Mayor, City of Nampa, **Chair**
 Tammy de Weerd, Mayor, City of Meridian
 John Franden, Commissioner, Ada County Highway District,
Chair-Elect
 Frank McKeever, Mayor, City of Middleton
 Nancy Merrill, Mayor, City of Eagle
 Matt Stoll, Executive Director, Community Planning Association,
 Ex officio
 Fred Tilman, Commissioner, Ada County

ABSENT MEMBERS: Garret Nancolas, Mayor, City of Caldwell, **Vice Chair**

OTHERS PRESENT: Nancy Brecks, Community Planning Association
 Ken Burgess, Veritas Advisors
 Terri Schorzman, Community Planning Association
 Jeanne Urlezaga, Community Planning Association

CALL TO ORDER:

Chair Dale called the meeting to order at 2:10 pm.

AGENDA CHANGES/ADDITIONS

No agenda changes or additions were requested.

OPEN DISCUSSION/ANNOUNCEMENTS

Mayor Merrill complimented staff on the August 20, 2007, COMPASS Board High Volume Intersection Workshop.

CONSENT AGENDA

A. Approve July 17, 2007, Executive Committee Meeting Minutes

Frank McKeever moved and Dave Bieter seconded approval of the Consent Agenda as presented. Motion passed unanimously.

ACTION ITEMS

A. Establish September 17, 2007, COMPASS Board Meeting

Matt Stoll presented staff proposed Agenda Items 1-12 and 14-16 for the September 17, 2007, Board meeting and requested to remove Agenda Item 13 – Discuss Next Steps Following May 2007 Board Retreat, and approval for staff to add another Agenda Item as appropriate.

After discussion, ***Nancy Merrill moved and Frank McKeever seconded approval of the September 17, 2007, COMPASS Board meeting Agenda Items 1-12 and 14-16 as presented, removal of Agenda Item 13 as requested by staff and authorized staff to add another Agenda Item as needed. Motion passed unanimously.***

A. Approve Membership Services Request from City of Meridian

Matt Stoll reviewed the City of Meridian's request for COMPASS to conduct an analysis of a proposed widening of Eagle Road from I-84 to River Valley Street, i.e., from the westbound Interstate 84 ramp intersection to approximately one-half mile north of Fairview Avenue, at a cost of approximately \$23,000. The cost of the analysis would be borne equally between the developer and COMPASS general membership dues. If the project is constructed, it will be paid for using the recently enacted Sales Tax Anticipated Revenue (STAR) financing tool. Upon approval of the project request, an amendment to the regional long range transportation plan and transportation improvement program would be required. The recommended amendments would be brought to the Board in December 2007.

After discussion, ***Fred Tilman moved and John Franden seconded approval of the membership services request from the City of Meridian for COMPASS to conduct an analysis of proposed improvements to Eagle Road from the westbound Interstate 84 (I-84) ramp intersection to approximately one-half mile north of Fairview Avenue as presented with the cost of the analysis to be borne equally between the Developer and COMPASS general membership dues. Motion passed unanimously.***

After discussion, ***Fred Tilman moved and Nancy Merrill seconded to add the Executive Committee approval of the City of Meridian's membership services request to the September 17, 2007, Board meeting agenda as a confirmation item in the Consent Agenda. Motion passed unanimously.***

Information/discussion items

B. Discuss Next Steps Following May 2007 COMPASS Board Retreat

Matt Stoll requested postponing discussion regarding next steps following the May 2007 COMPASS Board Retreat, until after a public opinion survey being conducted in September 2007 is completed.

Councilman Charlie Rountree discussed concerns regarding upcoming transportation project coordination efforts.

After discussion, Matt recommended that he meet with Charles Trainor and Councilman Rountree to develop an approach for COMPASS to coordinate the efforts.

After discussion, ***John Franden moved and Nancy Merrill seconded staff bring back to the Executive Committee at its September 18, 2007 meeting, a proposal for COMPASS to facilitate the transportation project coordination effort, with the intent of taking the proposal to the COMPASS Board at the October 15, 2007 meeting. Motion passed unanimously.***

C. Executive Session – Personnel Matter [Idaho Code 67-2345 (b)]

Frank McKeever moved and John Franden seconded moving into Executive Session under Idaho Code 67-2345 (b) at 3:05 p.m.

Matt Stoll called role. ***The following Executive Committee members were present and voted in the affirmative to move into Executive Session: Matt Beebe, Dave Bieter, Tom Dale, Tammy de Weerd, John Franden, Frank McKeever, Nancy Merrill and Fred Tilman. There were no nay votes:***

Dave Bieter moved and Frank McKeever seconded to move back into regular session at 3:20 p.m. No action was taken in the Executive Session. Committee members discussed the process for the Executive Director's annual evaluation. Motion passed unanimously.

ADJOURNMENT

Frank McKeever moved and Nancy Merrill seconded to adjourn at 3:21 p.m. Motion passed unanimously.

Dated this 18th day of September 2007.

APPROVED:

BY: _____
*Tom Dale, Chair
Community Planning Association*

ATTEST:

BY: _____
*Matthew J. Stoll, Executive Director
Community Planning Association*

EXECUTIVE COMMITTEE MEETING MINUTES
JULY 17, 2007
COMPASS CONFERENCE ROOM



****MINUTES****

ATTENDEES: Dave Bieter, Mayor, City of Boise, *Secretary/Treasurer*
Tom Dale, Mayor, City of Nampa, *Chair*
Tammy de Weerd, Mayor, City of Meridian
John Franden, Commissioner, Ada County Highway District,
Chair-Elect
Nancy Merrill, Mayor, City of Eagle (via telephone)
Garret Nancolas, Mayor, City of Caldwell, *Vice Chair*
Matt Stoll, Executive Director, Community Planning Association,
Ex officio
Fred Tilman, Commissioner, Ada County

ABSENT MEMBERS: Matt Beebe, Commissioner, Canyon County
Frank McKeever, Mayor, City of Middleton

OTHERS PRESENT: Nancy Brecks, Community Planning Association
Ken Burgess, Veritas Advisors
Terri Schorzman, Community Planning Association
Jeanne Urlezaga, Community Planning Association

CALL TO ORDER:

Chair Dale called the meeting to order at 2:05 pm.

AGENDA ADDITIONS/CHANGES

Matt Stoll requested to approve travel expenses for Mayor Merrill and Mayor Bieter who attended the July 9, 2007, Salt Lake City Transit Tour.

After discussion, *Fred Tilman moved and John Franden seconded approval of travel expenses for Mayor Nancy Merrill and Mayor Dave Bieter who participated in the Salt Lake City Transit Scanning Tour on July 9, 2007. Motion passed unanimously.*

CONSENT AGENDA

A. Approve June 19, 2007, Executive Committee Meeting Minutes

Nancy Merrill moved and Fred Tilman seconded approval of the Consent Agenda as presented. Motion passed unanimously.

ACTION ITEMS

A. Establish August 20, 2007, COMPASS Board Meeting

Matt Stoll reviewed staff proposed Agenda Items 1-16 for the August 20, 2007, Board meeting.

After discussion, *Fred Tilman moved and Dave Bieter seconded approval of Agenda Items 1-12 as presented. Staff was directed to move Agenda Items 13 and 14 from Action Items to the Consent Agenda, to move Agenda Item 15 to the Consent Agenda if time allows for discussion at this Executive Committee meeting of Agenda Item V-A, and change Agenda Item 16 to an Air Quality Status Report. Motion passed unanimously.*

B. Executive Session – Personnel Matter [Idaho Code 67-2345 (a) and (b)]

Chair Dale determined that it was not necessary to move into Executive Session.

Ken Burgess, Veritas Advisors, presented Veritas' proposal to provide state and federal legislative services to COMPASS.

After discussion, *Dave Bieter moved and Nancy Merrill seconded to retain Veritas Advisors to provide state and federal legislative services to COMPASS based on Ken Burgess' presentation. Motion passed unanimously.*

INFORMATION/DISCUSSION ITEMS

Nancy Merrill noted that a Mayors' Summit will be held on July 23, 2007, from 7:30 am to 5:00 p.m., to build communication between the six cities in Ada County, Ada County and Ada County Highway District.

A. Discuss May 2007 COMPASS Board Retreat Next Steps

Matt Stoll stated that due to lack of time, this Item will be deferred to the August 21, 2007, Executive Committee meeting.

ADJOURNMENT

Tammy de Weerd moved and Fred Tilman seconded to adjourn at 3:33 p.m. Motion passed unanimously.

Dated this 21st day of August 2007.

APPROVED:

BY: _____
*Tom Dale, Chair
Community Planning Association*

ATTEST:

BY: _____
*Matthew J. Stoll, Executive Director
Community Planning Association*

COMPASS BOARD MEETING AGENDA ITEM III-D

DATE: OCTOBER 15, 2007



Topic: Membership Services Request from City of Meridian

Summary: The City of Meridian requested COMPASS consideration of a widening project on Eagle Road (SH 55) for possible amendment to **Communities in Motion** and to the **FY2008-2012 Transportation Improvement Program**. This request was approved by the Executive Committee on August 21, 2007 subject to final confirmation by the COMPASS Board. The project would add a third lane in each direction from I-84 to ½ mile north of Fairview—approximately two miles in length. The amendment is needed since Eagle Road is a regionally significant facility with its principal arterial status. (See attached map.)

The widening would be funded under a Sales Tax Anticipated Revenue mechanism recently enacted under Idaho Code 63-3641 and 40-201. The estimated \$15 million cost of widening, along with associated operational improvements on Eagle Road and adjacent ACHD facilities would be paid by a developer, CenterCal, which would seek reimbursement from the State of Idaho based on sales taxes generated by its project. No local or Idaho Transportation Department transportation dollars would be used for the widening. Fairview widening is already shown in **Communities in Motion**.

Staff Recommendation/Request: A scope and budget are attached for confirmation. Half of the estimated \$24,000 to process the amendment would be paid by CenterCal under a signed agreement. The amendment will be limited to consideration of the Eagle Road addition. The COMPASS public comment process addresses only the addition of the widening project. Meridian will consider the development itself separately.

The Regional Technical Advisory Committee endorsed this process and requested a general amendment process for **Communities in Motion** be developed for review.

Implication (policy and/or financial):

- If the development goes forward as planned, Eagle Road would be widened with no direct cost to ITD or ACHD.
- An initial air quality conformity test indicates the resulting emissions would be under budgets established in the State Implementation Plan.
- Timing of improvements to Eagle Road will need to be considered since Meridian/Main couplet is scheduled for work in 2009.

Highlights: The widening to Eagle Road would result in modest reductions to parallel roads such as Locust Grove and Cloverdale.

More Information:

- 1) Attachments - 2
- 2) For detailed information contact: Charles Trainor, Director of Planning at 855-2558 ext. 232 or ctrainor@compassidaho.org.

pc: File 705.4 – Eagle Road Amendment

CT:nb T:\FY08\700 Services\705 Trans Liaison Services\Eagle Road Amendment\board-memo-oct2007.docx

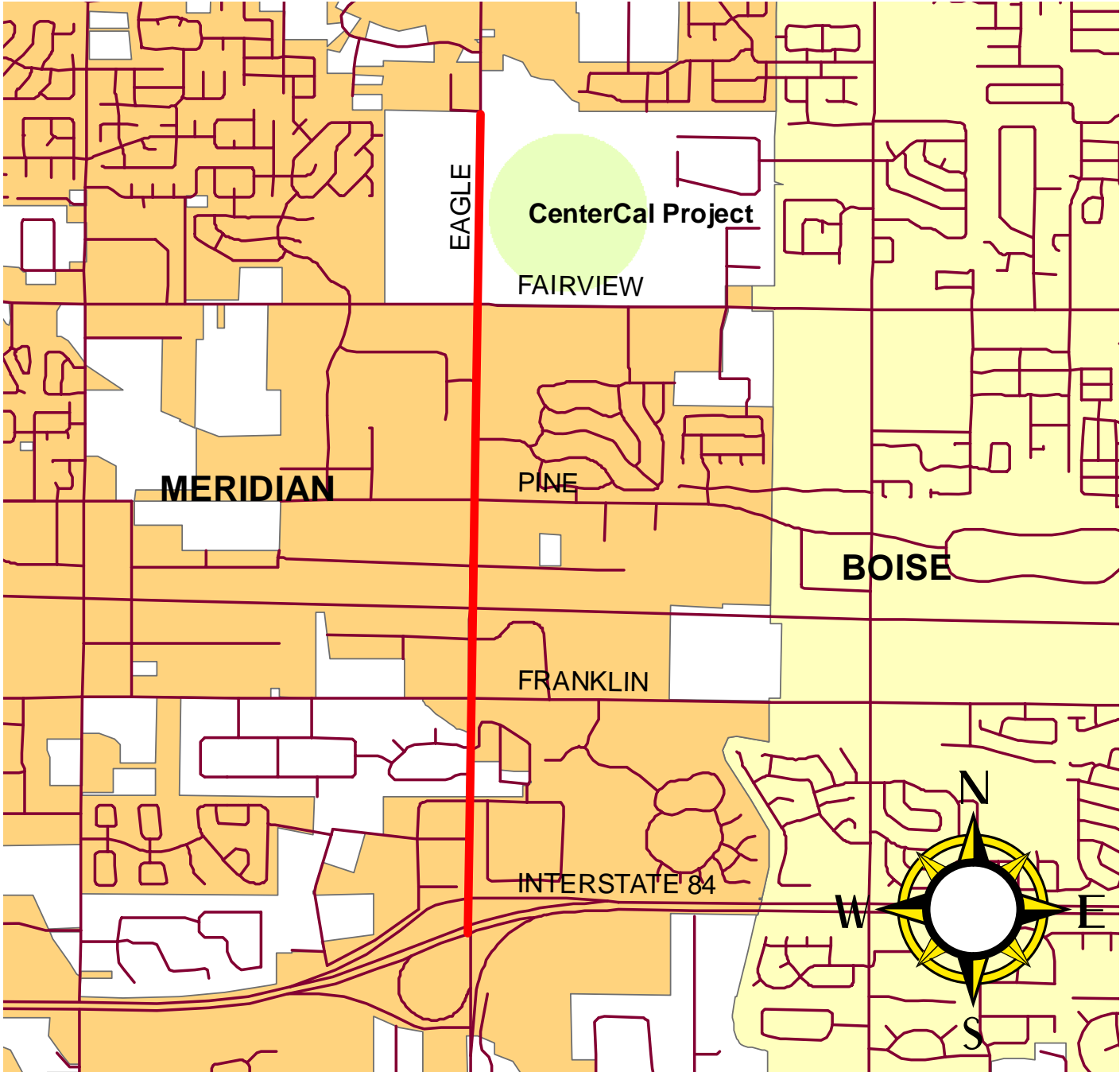
800 S. Industry Way, Ste 100

Meridian, ID 83642

P. 208.855.2558

F. 208.855.2559

www.compassidaho.org



Scope of Work
Proposed CIM and TIP Amendment for Eagle Road Widening Project

<i>Task</i>	<i>Staff Responsibility</i>	<i>Approximate Date</i>	<i>Estimated Staff Time (hrs)</i>	<i>Estimated Direct Cost</i>
RTAC Meeting - Notify RTAC of amendment request	Present amendment request to committee members	9/26/2007	3	\$0
ICC Meeting - Request ICC's approval of the amended project list for CIM and TIP FY 2008-2012	Present draft amended project list to ICC members requesting approval	9/27/2007	2	\$0
Amend CIM document	Report text amendment, corridor write up, description of project, add to the map, add project to list and develop summary for CIM (no change to financial) - 100% developer funded) - Inflated value for all projects and financial summary update	9/23/2007	80	\$0
Amend TIP FY 2008-2012	Amend TIP, update tables, financial (possible)	9/23/2007	24	\$0
Amend Air Quality Conformity Document for CIM	Update tables, graphs, input and output files. Post to web	10/4/2007	24	\$0
Amend Air Quality Conformity Document for FY 2008-2012	Update tables, graphs, input and output files. Post to web	10/4/2007	24	\$0
Start Public Comment Period for TIP and CIM amendment	Prepare legal notices, advertising, send email to stakeholders, reserve space, prepare materials	10/8/2007	51	\$1,000
RTAC Mail out	Prepare memo and relevant information for RTAC *HANDOUT	10/17/2007	2	\$0
Conduct Public Meeting	all materials and documents must be ready	10/18/2007	30	\$0
Close Public Comment Period for TIP and CIM amendment	Assemble any and all comments, summarize for RTAC and Board	10/23/2007	16	\$0
RTAC Meeting - Request recommendation to the Board of TIP, CIM RTAC and AQ Conformity amendment	Present amended documents to	10/24/2007	2	\$0
COMPASS Board Mail out	Prepare memo and relevant information for Board	11/9/2007	4	\$0
COMPASS Board Meeting * - Request Board approval of TIP, CIM and AQ Conformity amendment	Present amended documents to Board	11/19/2007	3	\$0
	Total Hours		346	
	Total Workdays		43.25	
	Workday Rates			
	Total Direct Expense			\$1,000
	Total Labor			\$23,031
		Project Total		<u>\$24,031</u>

COMPASS BOARD MEETING AGENDA ITEM III-E

DATE: OCTOBER 15, 2007



Topic: *FY2008-2012 Transportation Improvement Program Mirroring*

Summary:

After the formal approval of the FY2008-2012 Transportation Improvement Programs, the local and statewide programs are compared for consistency. This process is known as "mirroring." It is typical to have multiple minor corrections to both programs. Attachment 1 provides detailed changes that COMPASS staff found for the local and statewide programs. Most changes are very minor, such as breaking amounts into different categories without changing the total funding amount, changing a dollar amount by \$1,000 or the local match rate, or clarifying language. A few changes were more substantial. Those changes are called out in the attachment with a bold key number.

Staff Recommendation/Request:

Approve the mirroring changes to the FY2008-2012 Transportation Improvement Programs as submitted. The Regional Technical Advisory Committee also recommends approval.

Implication (policy and/or financial):

The local and statewide programs must match. If they do not, the Federal Highway Administration and Federal Transit Administration will not provide approval. The FY2007-2011 Transportation Improvement Programs will remain in effect in the COMPASS region until agreement on the new programs is reached.

Highlights:

Several of the more significant changes are listed below:

- Key Number H357 – I-84, Study of SH 44 Interchange to Karcher Interchange (Feasibility and Early Environmental) – removed from program.
- Key Number 03214 – I-84, Karcher Road Interchange, Nampa – increase construction amount by \$838,000.
- Key Number 09188 - 21st Avenue/Indian Creek Bridge, Caldwell – increase right of way by \$69,000.
- Key Number 09341 – SH 45, Melba Road to Deer Flat Road – increase construction by \$640,000.
- Key Number 09347 – US 95, Parma Business District – increase construction by \$27,000.
- Key Number 09740 – Treasure Valley Air Quality Study – project split over two years at request of the sponsor.
- Key Number 10489 – 8th Street School Sidewalks – right of way was moved from FY2008 to FY2009.
- Key Number 10940 – I-84, Franklin Boulevard Overpass Rebuild (GARVEE FY2008) – increase total project by \$950,000.
- Multiple changes in the GARVEE program.

More Information:

- 1) Attachment 1: Mirroring Changes
- 2) For detailed information contact: Toni Tisdale, Principal Planner at 855-2558, extension 228 or email at ttisdale@compassidaho.org.

pc: 685.01 and 685.02 Transportation Improvement Program

TT: nb T:\FY07\600 Projects\685 TIP\0812TIP\071015mmoBDmirror.docx

800 S. Industry Way, Ste 100

Meridian, ID 83642

P. 208.855.2558

F. 208.855.2559

www.compassidaho.org

Mirroring Changes
 FY2008-2012 Transportation Improvement Program (TIP) and Statewide Transportation Improvement Program (STIP)
 Northern Ada County

<i>Key Number</i>	<i>TIP Project Description</i>	<i>TIP</i>	<i>Fund Source</i>	<i>STIP</i>	<i>TIP</i>	<i>Comments</i>
H343	Federal Aid Overlay Arterials and Collectors – FY2012	NAC	STP-TMA	Local % - 20%	Local % - 7.34%	Change local percentage in STIP.
H344	Rideshare, ACHD's Rideshare Program – FY2012	NAC	STP-TMA	Local % - 20%	Local % - 0%	Change local percentage in STIP.
H3450	SH 16, SH 44 (State Street) to US 20/26 (Chinden Boulevard) River Crossing	NAC	GARVEE – Future	PE – 56 PEC – 7144 CE – 10150 CN – 67683	PE – 0 PEC – 7200 CE – 0 CN – 77833	Change PE/PEC/CE/CN amounts in TIP. No change in total funding amounts.
H942	Metropolitan Planning –FY2011	NAC	Other Federal (formula)	Local % - 20%	Local % - 7.34%	Change local percentage in STIP.
H950	Metropolitan Planning –FY2012	NAC	Other Federal (formula)	Local % - 20%	Local % - 7.34%	Change local percentage in STIP.
PT02	Transit – Facility Construction (176 and 652) – FY2006	NAC	FTA 5309			Change key number in TIP to “T348” and add reference PT02 into the title.
TMA3	Rideshare, ACHD's Rideshare Program – PD	NAC	STP-TMA	Local % - 7.34%	Local % - 0%	Change local percentage in STIP.
09342	SH 44 (Glenwood Street), SH 44 (State Street) to US 20/26, Garden City	NAC	Pavement Preservation	Local % - 7.34%	Local % - 7.43%	Change local percentage in TIP.
09507	Rideshare, ACHD's Rideshare Program – FY2009	NAC	STP-TMA	Local % - 7.34%	Local % - 0%	Change local percentage in STIP.
09519	Star Road	NAC	STP-R	ROW – 20	ROW – 0	Add ROW to TIP. Increase right of way by \$20,000.
09734	Purchase Ten (10) Commuter Vanpool Vehicles	NAC	CMAQ	CN – 320	CN – 319	Change CN amount in TIP.
09740	Treasure Valley Air Quality Study	NAC	CMAQ	2008 CN – 220 2009 CN – 175	2008 CN – 395	Change 2008 and 2009 CN in STIP and TIP. An air quality issue arose in the Pinehurst area. DEQ requested to split this project in order to advance a project in Pinehurst area to allow remediation activity earlier in Pinehurst. No change to the total funding amount.
09814	I-84, Gowen Road to Isaacs Canyon Rebuild	NAC	GARVEE – FY06/07	CN – 5012	Not included	Add to TIP with adjusted name to read “I-84, Gowen Road Interchange to Eisenman Interchange.” This project was delayed from FY2007.
09814	I-84, Gowen Road to Isaacs Canyon Rebuild	NAC	GARVEE – FY08	UT – 50 CE – 410 CN – 6756	Not included	Add to TIP with adjusted name to read “I-84, Gowen Road Interchange to Eisenman Interchange.” This project was delayed from FY2007.
09815	I-84, Ten Mile Interchange	NAC	GARVEE – Future	CE – 7934 CN – 52900	CN – 60834	Change CE/CN amounts in TIP. No change in total funding amounts.
09816	I-84, Cole Road to Broadway Avenue, North South Wall	NAC	GARVEE - FY08	CE – 846 CN – 5642	CN – 6488	Change CE/CN amounts in TIP. No change in total funding amounts.
09817	I-84, Orchard Interchange	NAC	GARVEE – FY06/07	PE – 50 PEC – 407	Not included	Add to TIP. This project was delayed from FY2007.
09817	I-84, Orchard Interchange	NAC	GARVEE – FY08	Not Included	PEC – 3110	Remove from TIP. Decrease in this project total \$3,110,000.

<i>Key Number</i>	<i>TIP Project Description</i>	<i>TIP</i>	<i>Fund Source</i>	<i>STIP</i>	<i>TIP</i>	<i>Comments</i>
09817	I-84, Orchard Interchange	NAC	GARVEE – Future	CE – 4601 CN – 30681	CE – 0 CN – 35282	Change CE/CN in TIP. No change in total funding amounts.
09818	I-84, Vista Interchange	NAC	GARVEE – FY08	PE – 50 PEC – 2422	PE – 0 PEC – 6490	Change PE/PEC amounts in TIP. Decrease to the project totaling \$4,018,000.
09819	I-84, Cole Road to Orchard Road Widening	NAC	GARVEE – FY06/07	PE – 50 PEC – 69	Not included	Add project to TIP. This project was delayed from FY2007.
09819	I-84, Cole Road to Orchard Road Widening	NAC	GARVEE – FY08	PE – 50 PEC – 726	PE – 0 PEC – 776	Change PE/PEC amounts in TIP. No change in total funding amounts.
09819	I-84, Cole Road to Orchard Road Widening	NAC	GARVEE – Future	CE – 2751 CN – 18343	CN – 21094	Change CE/CN amounts in TIP. No change in total funding amounts.
09820	I-84, Orchard Street to Vista Avenue Widening	NAC	GARVEE – FY06/07	PE – 50 PEC – 750	Not included	Add project to TIP. This project was delayed from FY2007.
09820	I-84, Orchard Street to Vista Avenue Widening	NAC	GARVEE – FY08	PE – 100 PEC – 1812	PE – 0 PEC – 1912	Change PE/PEC amounts in TIP. No change in total funding amounts.
09820	I-84, Orchard Street to Vista Avenue Widening	NAC	GARVEE - Future	ROW – 303 CE – 4023 CN – 26821	ROW – 666 CE – 0 CN – 29878	Change ROW/CE/CN amounts in TIP. Increase to this project totaling \$603,000.
09823	I-84, Vista Avenue to Broadway Avenue Widening	NAC	GARVEE – FY08	PEC – 0	PEC – 740	Change PEC amount in TIP. Decrease to this project totaling \$740,000.
09823	I-84, Vista Avenue to Broadway Avenue Widening	NAC	GARVEE – Future	CE – 3261 CN – 21745	CE – 0 CN – 25006	Change CE/CN amounts in TIP. No change in total funding amounts.
09963	SH 16, I-84 to Emmett Study	NAC	GARVEE – FY08	PE – 54 PEC – 4272	PE – 0 PEC – 4326	Change PE/PEC amounts in TIP. No change in total funding amounts.
10062	Transit – Purchase Vans, Design Sidewalk, and Park and Ride Lot Selection	NAC	FTA 5309	CN – 838	CN – 0	Add to TIP. This is a carryover from FY2007.
10063	Transit – Final Engineering and Construction	NAC	FTA 5309	Not Included	2008 Total = 926	Add to STIP. This project is a carryover from FY2007. Total = \$926,000, federal = \$740,800, local = \$185,200.
10110	Transit – Final Engineering and Construction	NAC	FTA 5309	Not Included	2008 Total = 199	Add to STIP. This project is a carryover from FY2007. Total = \$199,000, federal = \$159,200, local = \$39,800.
10111	Transit – Final Engineering and Construction	NAC	FTA 5309	Not Included	2008 Total = \$374,000	Add to STIP. This project is a carryover from FY2007. Total = \$374,000, federal = \$299,200, local = \$74,800.
10194	Metropolitan Planning – Transit – FY2008	NAC	Other Federal	Not included	2008 CN – 192	Add to STIP.
10459	I-84, Garrity Interchange to Meridian Interchange	NAC	GARVEE – FY06/07	Not Included	CE – 0 CN – 18397	This project was split into KN 11001-11007 as shown below. Total change (both counties) increase in PEC of \$1,884,000 and decrease in CN of \$10,391,000.
10459	I-84, Garrity Interchange to Meridian Interchange	NAC	GARVEE – FY08	PE – 25 (50%) PEC – 2753 (50%)	PE – 0 PEC – 3044 CN – 41312	Change PE/PEC/CN amounts in TIP. This project was split into KN 11001-11007 as shown below. Total change (both counties) decrease in PEC of \$6,089,000 and decrease in CN of \$1,090,000.
10488	Pioneer Corridor Bicycle/Pedestrian Improvements	NAC	Non-participating	CN – 5	CN – 0	Add to TIP. Preliminary estimates show project needs additional funds.
10489	8 th Street School Sidewalks	NAC	STP-E	2009 ROW – 8	2008 ROW – 8	Move ROW to 2009 in TIP.

<i>Key Number</i>	<i>TIP Project Description</i>	<i>TIP</i>	<i>Fund Source</i>	<i>STIP</i>	<i>TIP</i>	<i>Comments</i>
10540	Rideshare, ACHD's Rideshare Program – FY2010	NAC	STP-U	Local % - 7.34%	Local % - 0%	Change local percentage in STIP.
10557	I-84, Broadway Avenue to Gowen Road Overlay	NAC	GARVEE - FY08	CE – 827 CN – 8677	CN – 9504	Change CE/CN in TIP. No change in total funding amount.
11001	I-84, Garrity Interchange to Meridian Interchange, Milling and Temporary Widening	NAC	GARVEE – FY06/07	CE – 196 (50%) CN – 786 (50%)	Not Included	Split from KN 10459. Add to TIP and STIP.
11002	I-84, Ten Mile Creek Widening, Meridian	NAC	GARVEE FY06/07	CE – 88 (50%) CN – 352 (50%)	Not Included	Split from KN 10459. Add to TIP and STIP.
11003	I-84, Garrity Interchange to Meridian Interchange, Median Phase	NAC	GARVEE FY06/07	CE – 354 (50%) CN – 1417 (50%)	Not Included	Split from KN 10459. Add to TIP and STIP.
11004	I-84 Garrity Interchange to Meridian Interchange Phase	NAC	GARVEE FY06/07	CE – 356 CN – 1424	Not Included	Split from KN 10459. Add to TIP and STIP.
11005	I-84, Garrity Interchange to Meridian Interchange, Reconstruction Phase	NAC	GARVEE FY06/07	CE – 450 (50%)	Not Included	Split from KN 10459. Add to TIP and STIP.
11005	I-84, Garrity Interchange to Meridian Interchange, Reconstruction Phase	NAC	GARVEE – FY08	CE – 8539 (50%) CN – 32228 (50%)	Not Included	Split from KN 10459. Add to TIP and STIP.
11006	I-84, Garrity Interchange to Meridian Interchange, Traffic Control Phase	NAC	GARVEE FY06/07	CE – 402 (50%) CN – 1609 (50%)	Not Included	Split from KN 10459. Add to TIP and STIP.
11007	I-84, Robinson Road and Black Cat Road Bridge Reconstruction	NAC	GARVEE FY06/07	PE – 25 (50%) PEC – 917 (50%) CE – 1652 (50%) CN – 5668 (50%)	Not Included	Split from KN 10459. Add to TIP and STIP.

All GARVEE local percentage changed to 100%.
Updated “previously expended” data.

PE = Preliminary Engineering
PEC = Preliminary Engineering Consultant
ROW = Right-of-Way
UT = Utilities

CE = Construction Engineering
CN = Construction
NAC = Northern Ada County

Mirroring Changes
 FY2008-2012 Transportation Improvement Program (TIP) and Statewide Transportation Improvement Program (STIP)
 Nampa Urbanized Area

<i>Key Number</i>	<i>TIP Project Description</i>	<i>TIP</i>	<i>Fund Source</i>	<i>STIP</i>	<i>TIP</i>	<i>Comments</i>
H340	21 st Avenue, Franklin Intersection, Commercial Way Realignment	NUA	STP-U	CN – 1243	CN – 1237	Change CN amount in STIP.
H341	Rideshare, ACHD's Rideshare Program – FY2012	NUA	STP-U	Local % - 7.34%	Local % - 7.34%	Change local percentage in STIP and TIP to 0%.
H342	Rideshare, ACHD's Rideshare Program – PD	NUA	STP-U	Local % - 7.34%	Local % - 0%	Change local percentage in STIP.
H357	I-84, Study of SH 44 Interchange to Karcher Interchange	NUA	FEE	Removed	2008 PE – 100	Remove from TIP. ITD removed from STIP.
H942	Metropolitan Planning –FY2011	NUA	Other Federal (formula)	Local % - 20%	Local % - 7.34%	Change local percentage in STIP.
H950	Metropolitan Planning –FY2012	NUA	Other Federal (formula)	Local % - 20%	Local % - 7.34%	Change local percentage in STIP.
03214	I-84, Karcher Road Interchange, Nampa	NUA	Expansion	CN - 5000	CN - 4162	Change CN amount in TIP. Increase construction by \$838,000.
08945	SH 55, UPRR Overpass, Nampa	NUA	Bridge			Change project sponsor to City of Nampa in TIP and STIP and change project name from SH 55 to "Northside Boulevard."
09188	21 st Avenue/Indian Creek Bridge, Caldwell	NUA	Bridge (Local)	ROW – 69	ROW - 0	Add ROW to TIP. Increase right of way by \$69,000.
09341	SH 45, Melba Road to Deer Flat Road	NUA	Pavement Preservation	CN – 2790	CN – 2150	Change CN amount in TIP. Increase construction by \$640,000.
09347	US 95, Parma Business District	NUA	Pavement Preservation	CN – 487	CN – 460	Change CN amount in TIP. Increase construction by \$27,000.
09438	Caldwell Biking – Walking Trail System	NUA	STP-E	2007 ROW - 15	2008 ROW – 15	Change in TIP and STIP. This project was delayed from FY2007.
09516	Rideshare, ACHD's Rideshare Program – FY2009	NUA	STP-U	Local % - 7.34%	Local % - 0%	Change local percentage in STIP.
09818	I-84, Vista Interchange	NUA	GARVEE – Future	CE – 9516 CN – 63442	CE – 0 CN - 72958	Change CE/CN amounts in TIP. No change in total funding amounts.
09985	16 th Avenue Bridge, Nampa	NUA	Bridge (Local)	Local % - 7.34%	Local % - 20%	Change local percentage in TIP.
10098	Transit – Planning – FY2008	NUA	FTA 5307	CN – 126	CN – 86	Change funding amounts in TIP.
10194	Metropolitan Planning – Transit – FY2008	NUA	Other Federal	Not included	2008 CN – 60	Add to STIP.
10459	I-84, Garrity Interchange to Meridian Interchange	NUA	GARVEE – FY06/07	Not Included	CE – 0 CN – 18398	This project was split into KN 11001-11007 as shown below. Total change (both counties) increase in PEC of \$1,884,000 and decrease in CN of \$10,391,000.
10459	I-84, Garrity Interchange to Meridian Interchange	NUA	GARVEE – FY08	PE – 25 (50%) PEC – 2754 (50%)	PE – 0 PEC – 3045 CN – 41312	Change PE/PEC/CN amounts in TIP. This project was split into KN 11001-11007 as shown below. Total change (both counties) decrease in PEC of \$6,089,000 and decrease in CN of \$1,090,000.
10538	Rideshare, ACHD's Rideshare Program – FY2011	NUA	STP-U	Local % - 7.34%	Local % - 0%	Change local percentage in STIP.

<i>Key Number</i>	<i>TIP Project Description</i>	<i>TIP</i>	<i>Fund Source</i>	<i>STIP</i>	<i>TIP</i>	<i>Comments</i>
10539	Rideshare, ACHD's Rideshare Program – FY2010	NUA	STP-U	Local % - 7.34%	Local % - 0%	Change local percentage in STIP.
10541	Amity Road, Chestnut to Kings Corner	NUA	SAFETEA-LU			Change description to read "Amity Road, Chestnut Street to Robinson Road, Nampa." In concept development and not sure the exact termini at this point.
10915	I-84, Garrity Interchange	NUA	GARVEE – FY08	CE – 54 CN – 919	PE – 0 PEC – 973	Change PE/PEC amounts in TIP. No change in total funding amounts.
10915	I-84, Garrity Interchange	NUA	GARVEE - Future	CE – 1060 CN – 7058	CE – 0 CN – 8118	Change CE/CN amounts in TIP. No change in total funding amounts.
10916	I-84, Garrity Interchange to Franklin Interchange	NUA	GARVEE – FY08	PE – 54 PEC – 7083	PE – 0 PEC – 7137	Change PE/PEC amounts in TIP. No change in total funding amounts.
10916	I-84, Garrity Interchange to Franklin Interchange	NUA	GARVEE - Future	CE – 7765 CN – 51755	CE – 0 CN – 59520	Change CE/CN amounts in TIP. No change in total funding amounts.
10940	I-84, Franklin Boulevard Overpass Rebuild	NUA	GARVEE – FY08	PE – 50 PEC – 950 CE – 1683 CN – 11223	PE – 0 PEC – 50 CE – 0 CN – 12906	Change category amounts in TIP. Increase to this project totaling \$950,000.
11001	I-84, Garrity Interchange to Meridian Interchange, Milling and Temporary Widening	NUA	GARVEE – FY06/07	CE – 197 (50%) CN – 786 (50%)	Not Included	Split from KN 10459. Add to TIP and STIP.
11003	I-84, Garrity Interchange to Meridian Interchange, Median Phase	NUA	GARVEE FY06/07	CE – 355 (50%) CN – 1418 (50%)	Not Included	Split from KN 10459. Add to TIP and STIP.
11005	I-84, Garrity Interchange to Meridian Interchange, Reconstruction Phase	NUA	GARVEE FY06/07	CE – 450 (50%)	Not Included	Split from KN 10459. Add to TIP and STIP.
11005	I-84, Garrity Interchange to Meridian Interchange, Reconstruction Phase	NUA	GARVEE – FY08	CE – 8539 (50%) CN – 32228 (50%)	Not Included	Split from KN 10459. Add to TIP and STIP.
11006	I-84, Garrity Interchange to Meridian Interchange, Traffic Control Phase	NUA	GARVEE FY06/07	CE – 403 (50%) CN – 1609 (50%)	Not Included	Split from KN 10459. Add to TIP and STIP.
11007	I-84, Robinson Road and Black Cat Road Bridge Reconstruction	NUA	GARVEE FY06/07	PE – 25 (50%) PEC – 917 (50%) CE – 1653 (50%) CN – 5669 (50%)	Not Included	Split from KN 10459. Add to TIP and STIP.

All GARVEE local percentage changed to 100%.
Updated "previously expended" data.

PE = Preliminary Engineering
PEC = Preliminary Engineering Consultant
ROW = Right of Way
UT = Utilities

CE = Construction Engineering
CN = Construction
NAC = Northern Ada County

T:\FY07\600 Projects\685 TIP\0812TIP\Mirroring Changes.doc

COMPASS BOARD MEETING AGENDA ITEM IV-B

DATE: OCTOBER 15, 2007



COMPASS
COMMUNITY PLANNING ASSOCIATION
of Southwest Idaho

Topic: Transportation Project Coordination

Summary:

At its August 21, 2007 meeting the Executive Committee discussed a concern about how transportation projects and traffic would be coordinated over the next several years and possibly beyond. The trigger was the impact of the I-84 projects under GARVEE funding on regional traffic flows during construction. How do other projects slated by local agencies get considered? (See attached map.)

COMPASS convened several meetings of staff to discuss the coordination options and issues. Participants included Idaho Transportation Department-District 3, Connecting Idaho Partners (GARVEE management), the Ada County Highway District, City of Nampa, City of Meridian, and the Nampa and Canyon Highway Districts.

The issues are complex but the participants agreed to one key element: a "one-stop" approach is essential. This means a common forum to consider the projects, their implications for traffic, and possible strategies to deal with issues. It also means a central point of contact and information for the public.

Attached are:

- A description of two basic approaches to coordination. Costs are dependent on a number of issues, but the basic cost would be 1 full time employee, either a new hire or a reallocation of existing staff. The direct costs for an effective information campaign were estimated at \$250,000+ per year. Staff and direct costs would be affected by engagement with other processes, including the coordination efforts by Connecting Idaho Partners.
- A chart showing the general relationship of the groups that would be involved in project coordination. The process is collaborative, with decision-making power remaining under the implementing agencies.

Staff Recommendation/Request:

Review two options for COMPASS' role in transportation project coordination. Provide direction as to the desired role for COMPASS. Concerns voiced by the Coordination working group and the Regional Technical Advisory Committee were that existing resources be used to minimize costs and that a coordination process not dictate decisions by the implementing agencies.

Implication (policy and/or financial):

- If either option is supported, some reallocation of staff time would be needed.
- If the second option is supported, additional direct dollars would be needed.

Highlights:

- One-stop information on transportation projects is essential.
- Elected officials need an early warning regarding issues.
- Public information also needs to address situations when conflicts cannot be avoided.
- The coordination process may be on-going—not just for the next few years.

More Information:

- 1) Attachments - 3
- 2) For detailed information contact: Charles Trainor, Director of Planning, at 855-2558 ext. 232 or ctrainor@compassidaho.org

Pc: File 705.3 – Transportation Liaison – Project Coordination

CT:nb T:\FY07\700 Services\705 Transportation Liaison Services\Transportation Project Coordination\boardmemo-oct2006.docx

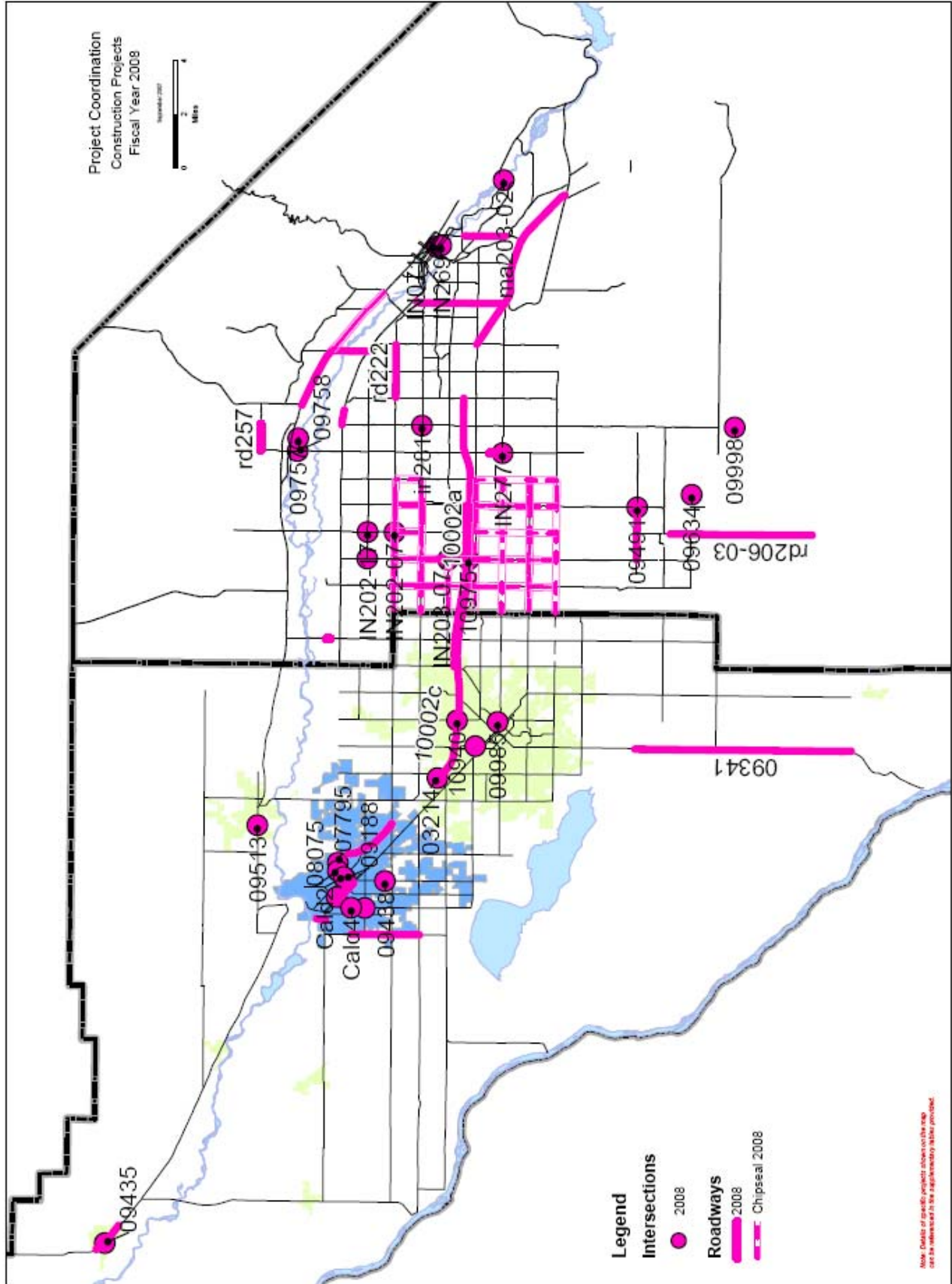
800 S. Industry Way, Ste 100

Meridian, ID 83642

P. 208.855.2558

F. 208.855.2559

www.compassidaho.org



Transportation Project Coordination Approaches

Version 1 (Simple):

COMPASS would collect construction information, coordinate with public information staff at local agencies, package it for public consumption (“on the same page”) and submit to agencies for their distribution. Any regionally significant implications will be addressed in concert with agency Public Information Officers and come from COMPASS. COMPASS will also contact elected officials/board members with “early warnings” about impending doom.

Cost to COMPASS: 1 FTE and overhead; some directs (but not funding for major communications campaign).

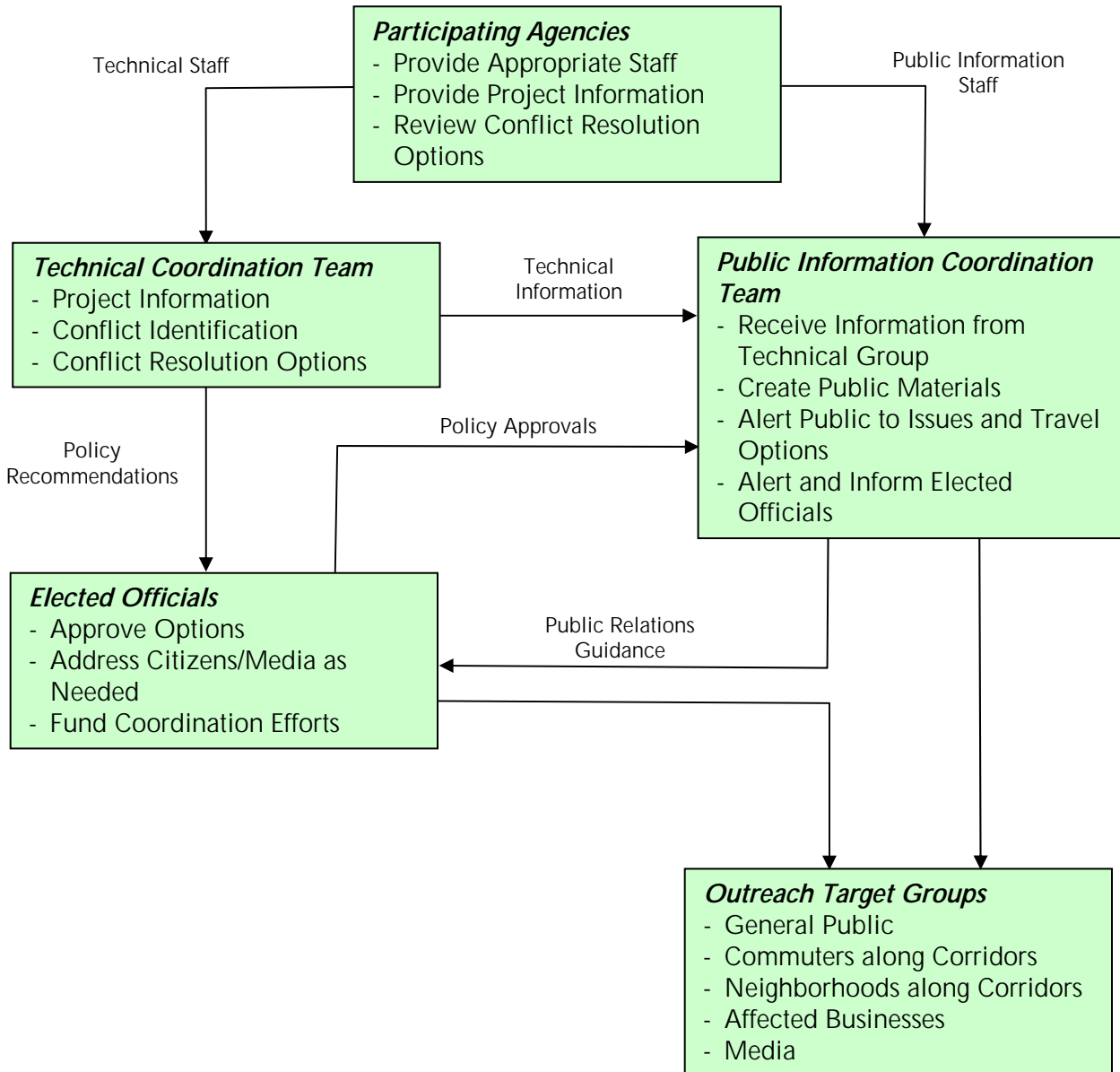
If COMPASS is expected to develop and distribute a major communications campaign during construction (3+ years?), include no less the \$250,000 per year for radio, some television PSAs, massive print drops, newspaper inserts, interactive web updates, and more. If this is requested, staff recommends Version 2.

Version 2:

Develop a “one-stop shop” of communications information. A contracting company may perform the full service – funded by state and local agencies -- or may be COMPASS with additional staff and funding from member agencies. An outreach process is being developed as part of the GARVEE projects under Connecting Idaho Partners. In addition, the Idaho Transportation Department has a web site that could be expanded to include local projects. (<http://511.idaho.gov/>) This element is now being explored with ITD staff.

The more complex structure in Version 2 could be a precursor to the Interagency Regional Operations Center (IROC) and would be responsible for managing technical and public information committees, gathering and assembling technical information, redistributing key information to agencies and elected officials, and managing the development and distribution of massive media campaign during the course of construction.

General Relationship of Transportation Coordination Components



T:\FY07\700 Services\705 Transportation Liaison Services\Transportation Project Coordination\relationship-chart.doc

COMPASS BOARD MEETING AGENDA ITEM V-A

DATE: OCTOBER 15, 2007



COMPASS
COMMUNITY PLANNING ASSOCIATION
of Southwest Idaho

Topic: *Communities in Motion Project Prioritization and Associated Results*

Summary:

A key component and requirement of long range transportation plans is the financially constrained project list. Project prioritization is a method to match project "wants" with available funding. The ***Communities in Motion*** consultant team researched and developed a project prioritization "best practices" evaluation based on other regions. The proposed framework was presented to the Project Coordination Team in October 2005 and was the premise for the prioritization process used by staff. The entire ***Communities in Motion*** preliminary transportation project list was presented to the COMPASS Board on November 7, 2005. This list was subjected to the prioritization process developed by the consultants and accepted by the Project Coordination Team. Attachment 1 lists and defines the prioritization criteria. Between November 2005 and February 2006, refinements occurred and the projects were ranked. Per the Project Coordination Team's recommendation the funded projects were listed in alphabetical order versus rank. The February 27, 2006 Board meeting included a discussion on prioritization results. Attachment 2 is the final project prioritization sorted by score and rank.

Staff Recommendation/Request:

Staff requests the COMPASS Board input regarding the need for refinement to the prioritized corridors. Refinement could include breaking out the major components of the full corridor into more fundable parts. For example, some corridors have full costs exceeding \$300 million.

Implication (policy and/or financial):

- The project prioritization process informs the Board on decisions regarding allocation of existing resources and the need for new funds.
- As the prioritization process becomes more detailed and complex, it will affect staff time needed to develop information.

Highlights:

- The prioritization process was developed by the consultant team and members of the Project Coordination Team.
- The corridors were scored and ranked, but the PCT requested grouping projects into four general categories – In Plan, Probable, Borderline, and Illustrative. In Plan, Probable and Borderline projects are "funded" and listed alphabetically in ***Communities in Motion***, page 92.
- Results of the prioritization process were initially presented to the Board on February 27, 2006. This process has been the basis for developing the Transportation Improvement Program prioritization process, also presented for Board approval.
- ***Communities in Motion*** includes a two-page summary and score for each corridor, pages 98-153.
- The prioritization process was intended to inform decision makers and implementing agencies.
- Recognition of the funding limitations, the qualitative nature of some criteria, and the major costs of funding an entire corridor are important.

More Information:

- 1) Attachments (2)
 - 2) For detailed information contact: Mary Ann Waldinger, Principal Planner, at 855-2558 ext. 234 or mwaldinger@compassidaho.org.
- Pc: File 661.03-Communities in Motion
File 685.03-Transportation Improvement Program

MW:nb T:\FY08\600 Projects\661 CIM\Project Prior Board_oct2007.doc

800 S. Industry Way, Ste 100

Meridian, ID 83642

P. 208.855.2558

F. 208.855.2559

www.compassidaho.org

Traditional Criteria - Roadway

No. is a numerical identifier tied to the initial alphabetical listing of projects.

Project is the name of project with termini and a brief description of the nature of the project.

Costs were provided by the consultant team, some costs from the I-84 Corridor Study, Moving People 2025, Destination 2030 Limited Update, and Ada County Highway District (actual estimated cost). All costs are shown in current (2005) dollars.

\$ Per Total Trip is calculated dividing the cost by the total trip volume (average or midpoint).

Total Trips Volume Range (Build) is from the 24-hour travel demand model for the 2030 Community Choices land use and the unconstrained project list. The low and high volumes were determined from looking at traffic volumes between the project's termini. The midpoint is an average of the low and high. Some projects have only one volume such as bridges and interchanges (sum of all ramp volumes). (Number of trips) Note that projected volumes cannot yet be computed for Partnering County projects.

Potential Travel Time Savings (Annual Hours) is based on the difference between the no build and build travel time for that project multiplied by the midpoint total trip volume multiplied by 255 weekdays. Data is not provided for projects that are short in length such as an interchange or bridge (number of annual hours saved). Note that time savings cannot yet be computed for Partnering County projects.

Work Trips, \$ Per Trip Served are calculated dividing the cost by the work trip midpoint (in dollars). (Not used in this round of prioritization.)

Work Trips Volume Range (Build) are from the 24-hour travel demand model for the 2030 Community Choices land use and the unconstrained project list. The low and high work trip volumes were determined from looking between the project's termini. The midpoint is an average of the low and high. Some projects have only one volume such as bridges and interchanges (sum of all ramp volumes). (Number of trips) Note that work trips cannot yet be computed for Partnering County projects.

Rank \$ per Total Trip are scores based on Total Trips \$ per trip served. (Ordinal – 1 is low and 5 is high)

Rank Time Total Savings are scores based on Potential Travel Time Savings (Annual Hours). (Ordinal – 1 is low and 5 is high)

Connections were based on how a project improves an existing connection such as an interchange, adds a connection across a barrier such as a new river crossing, or simply fills in a gap in the system such as Pine St extension to Black Cat. The highest rate was given to projects that fill a gap or add access. (Ordinal – 1 is low and 5 is high)

Regionality is based on the existing functional classification of the roadway. Freeways are rated highest (5) and minor arterials are rated lowest (1).

Initial Score for Traditional Criteria is a total of multiplied by 2 for a heavier weight for these criteria.

Total Score for Traditional and Non-Traditional Criteria is a total score for each project.

Non-Traditional Criteria

Project is the name of project with termini.

Costs were provided by the consultant, some costs from the I-84 Corridor Study, Moving People 2025, Destination 2030 Limited Update, and Ada County Highway District (actual estimated cost).

GARVEE Eligible specifies those projects eligible for GARVEE funds (notably projects along I-84 and SH 16).

Current Functional Classification is the current classification of roadways. Some projects have multiple classifications. Some modification is expected to functional classification.

Project Length in Miles provides the approximate length of the total project. Data is not provided for most interchange projects.

Existing Lanes provides the number of current lanes on the project. Data is not provided for most interchange projects.

Proposed Lanes provides the number of lanes proposed at build-out. Data is not provided for most interchange projects.

Growth is based on if the project was located in an area indicated for growth on the Community Choices land use map multiplied by 2 for weighting. Maximum points were given to projects that connected two growth areas, but passed through a non-growth area. (Ordinal – 1 is low and 5 is high)

% of Growth Rate is based on the percent growth from 2005 to 2030 for each demographic area multiplied by 2 for weighting. Growth rates were generalized for projects that extended through multiple areas. (Ordinal – 1 is low and 5 is high)

Community Choices Ranking (submitted to COMPASS Board on 2/27/2006)

No weighting for traditional, weighting of 2 for growth share and transit, with \$ per VMT instead of \$ per trip, growth ranking based on future share of housing/employment--not % change in population

1/22/2006

No.	Corridor	Cost		Status	Traditional				Non-Traditional				Total Score	Rank	
					Weighting	1	1	1	1	1	2	1			1
					\$ per VMT	Time Total Savings	Connections	Regionality	Growth Area	% of Region Growth	CMS Plan	Sensitive Area	Transit		
10	I-84: Cole/Overland IC-Gowen IC. Widen from 4 lanes to 8 lanes. Includes interchange reconstruction at Orchard, Vista, Broadway and Gowen.	\$293,000,000	\$293,000,000	In Plan	3	5	1	5	5	5	0	0	5	39	1
14	I-84: Ten Mile Interchange. Build new interchange on I-84.	\$0	\$293,000,000	In Plan	5	1	5	5	5	5	0	0	4	39	1
13	I-84: Garrity IC-Meridian IC. Widen from 4 lanes to 8 lanes. Includes reconstruction of Garrity interchange and existing over/underpasses.	\$192,400,000	\$485,400,000	In Plan	4	5	1	5	5	4	0	0	5	38	3
11	I-84: Exit 29-Garrity IC. Widen from 4 lanes to 6 lanes. Includes reconstruction of Franklin and Nampa Blvd interchanges and existing over/underpasses.	\$513,800,000	\$999,200,000	In Plan	2	4	1	5	5	5	0	0	5	37	4
17	Lake Hazel Rd: Happy Valley - Eisenmann Rd (including Gowen Road Realignment)	\$104,210,000	\$1,103,410,000	In Plan	4	3	3	3	5	5	0	0	4	36	5
12	I-84: Future SH 16 Interchange: vicinity of McDermott. Construct new interchange. Construct new interchange with ramps to connect with Franklin.	\$73,600,000	\$1,177,010,000	In Plan	1	1	5	5	5	4	0	0	5	35	6
34	Ustick Rd: Caldwell/Nampa Blvd.-Curtis Rd. Widen from 2 lanes to 5 lanes.	\$103,200,000	\$1,280,210,000	In Plan	5	5	1	3	5	5	0	0	3	35	6
7	Fairview Ave.: Meridian Rd-Orchard. Widen from 5 lanes to 7 lanes.	\$41,010,000	\$1,321,220,000	In Plan	5	4	1	3	5	5	0	0	3	34	8
8	Franklin Rd: Can Ada Rd-Linder Rd. Widen from 2 lanes to 5 lanes.	\$26,700,000	\$1,347,920,000	In Plan	5	4	1	3	5	4	0	0	4	34	8
25	SH 44: Exit 25-Ballantyne Rd. Widen from 2 lanes to 4 lane limited access divided highway. Includes a new route through Middleton.	\$83,600,000	\$1,431,520,000	In Plan	4	5	1	3	5	3	0	0	5	34	8

36	State Street – SH 55 (Eagle) to downtown Boise (MMC)	\$43,840,000	\$1,475,360,000	In Plan	5	1	0	3	5	5	0	0	5	34	8
30	Ten Mile Rd: Lake Hazel - Chinden Blvd. Widen from 2 lanes to 5 lanes.	\$39,920,000	\$1,515,280,000	In Plan	2	3	5	3	5	4	0	0	4	34	8
33	US 20/26: Exit 29-Eagle Rd. Widen from 2 lanes to 4 lane limited access divided highway.	\$202,930,000	\$1,718,210,000	In Plan	3	5	1	4	5	4	0	0	4	34	8
24	SH 16: Ada/Gem line-I-84. Construct expressway with interchanges at Chaparral, Beacon Light, SH 44, US 20/26, & Ustick Rd. Overpass/Underpass at other roadways	\$241,860,000	\$1,960,070,000	In Plan	2	5	1	4	5	3	0	0	5	33	14
31	Three Cities River Crossing: SH 44-Chinden Blvd. Construct new roadway at 4/5 lanes and new bridge.	\$55,000,000	\$2,015,070,000	Probable	2	4	5	3	5	4	0	0	3	33	14
6	Cloverdale Rd: Lake Hazel Rd-Chinden Blvd. Widen from 2 lanes to 5 lanes.	\$43,600,000	\$2,058,670,000	Probable	4	2	1	1	5	5	0	0	4	31	16
21	Meridian Rd: Waltman Dr-Ustick Rd. Complete corridor improvements to 5 lanes. Includes partial couplet involving Main Street and Meridian Road.	\$12,700,000	\$2,071,370,000	Probable	4	1	1	3	5	4	0	0	4	30	17
5	Cherry Ln: Middleton Rd-Ten Mile Rd. Widen from 2 lanes to 5 lanes.	\$49,100,000	\$2,120,470,000	Borderline	5	5	1	3	5	3	0	0	2	29	18
1	Amity Rd: Southside Blvd-Cloverdale Rd. Widen from 2 lanes to 5 lanes.	\$51,900,000	\$2,172,370,000	Borderline	3	5	1	3	5	2	0	0	3	27	19
9	Greenhurst Rd: Middleton Rd-Happy Valley Rd. Widen from 2 lanes to 5 lanes.	\$26,700,000	\$2,199,070,000	Borderline	4	3	1	3	5	2	0	0	3	26	20
20	McDermott Rd: I-84-Lake Hazel Rd (including RR overpass at Hubbard). Widen from 2 lanes to 5 lanes. Access management to preserve future expressway.	\$34,600,000	\$2,233,670,000	Illustrative	3	2	1	3	5	3	0	0	3	26	20
28	SH 55: Sunnyslope curve to Karcher IC. Widen from 2 lanes to 4 lane limited access divided highway.	\$44,900,000	\$2,278,570,000	Illustrative	4	2	1	3	3	2	0	0	4	25	22
22	Middleton Rd: Greenhurst Rd-SH 44. Widen from 2 lanes to 5 lanes.	\$64,200,000	\$2,342,770,000	Illustrative	3	2	1	3	3	2	0	0	4	24	23
32	US 20/26: City of Parma -Exit 25. Widen to 4 lane limited access divided highway.	\$0	\$2,342,770,000	Illustrative	5	1	1	3	2	2	0	0	4	24	23
16	Kuna Mora Rd: SH 45/Bowmont Rd-existing section (including preservation for RR overpass)	\$6,000,000	\$2,348,770,000	Illustrative	5	3	5	3	3	1	0	0	0	21	25

27	SH 55: Beacon Light Rd-Brookside. Widen from 2 lanes to 4 lane limited access divided highway.	\$1,400,000	\$2,350,170,000	Illustrative	5	1	1	3	1	1	0	0	4	21	25
3	Beacon Light Road Extension: Purple Sage Road-SH 16. Construct new 2 lane road.	\$3,100,000	\$2,353,270,000	Illustrative	5	3	5	1	3	1	0	0	0	19	27
29	SH 69 Connection: Kuna Mora Rd-Kuna Rd. Build new road parallel to the UP rail (north side) to connect SH 69 to Kuna Mora.	\$2,300,000	\$2,355,570,000	Illustrative	5	1	5	3	3	1	0	0	0	19	27
19	Linder Road: Ustick Road-Beacon Light Rd. Widen from 2 lanes to 5 lanes.	\$25,100,000	\$2,380,670,000	Illustrative	4	3	1	1	3	3	0	0	0	18	29
4	Black Cat Rd: Franklin Rd-Chinden Blvd. Widen from 2 lanes to 5 lanes.	\$29,300,000	\$2,409,970,000	Illustrative	3	1	1	1	5	3	0	0	0	17	30
15	I-84: Ustick Rd Interchange. Construct new interchange.	\$25,000,000	\$2,434,970,000	Illustrative	1	1	5	5	1	2	0	0	0	17	30
26	SH 45: Deer Flat Rd-Locust Ln. Widen from 2 lanes to 4 lane limited access divided highway.	\$10,600,000	\$2,445,570,000	Illustrative	3	1	1	3	1	1	0	0	3	17	30
2	Beacon Light Rd: SH 16-SH 55. Widen from 2 lanes to 5 lanes.	\$37,430,000	\$2,483,000,000	Illustrative	3	2	1	1	1	2	0	0	2	16	33
35	Happy Valley Rd (5 lane) – from I-84 to Locust Lane	\$31,440,000	\$2,514,440,000	Illustrative	2	1	0	1	3	1	0	0	3	15	34
18	Linder Road: Kuna Mora Rd-Ustick Road. Widen/construct to 5 lanes. Includes a rail crossing in Kuna and an overpass at I-84.	\$77,530,000	\$2,591,970,000	Illustrative	2	1	4	1	5	1	0	0	0	15	34
23	Robinson Rd: Greenhurst Rd-Cherry Ln. Widen from 2 lanes to 5 lanes.	\$37,500,000	\$2,629,470,000	Illustrative	2	2	1	1	5	1	0	0	0	13	36
	Total - Major Roadway Capital		\$2,629,470,000												

COMPASS BOARD MEETING AGENDA ITEM V-C

DATE: OCTOBER 15, 2007



Topic: WORKSHOP – Communities in Motion Performance Monitoring Report

The workshop will address key findings of the *Communities in Motion* Performance Monitoring Report for fall 2007. This report was a key part of the recommendations under *Communities in Motion* and is intended to provide policy makers and citizens a sense of how we are making progress on goals in the plan. The report is posted on the COMPASS website at:

<http://www.compassidaho.org/documents/people/board/agenda10152007.pdf>.

The 65-page report is broken into several chapters, each addressing a particular theme:

- Balance Between Jobs and Housing.
- Choices in Housing.
- Choices in Transportation.
- Connectivity.
- Preservation of open space and farmland.

At the back of the report are summaries by areas of impact and the areas of Ada and Canyon Counties not included in areas of impact.

The report has been reviewed by the Regional Technical Advisory Committee (RTAC) but has not received any recommendation. RTAC members had several areas of concern in terms of what is being measured and how. At the same time, there was a good deal of support for the materials contained in the report, with a recognition that future editions will continue to refine and improve the information and presentation.

The intent of the workshop is to focus the Board on four key issues which developed out of discussions by RTAC members:

- Open space and farmland. What is the role of cities and counties in preserving farmland? Should preservation of farmland within areas of impact be a concern? What is the role of open space and how is open space defined?
- Choices in housing. When considering housing choices, what is the importance of housing affordability when considering diversity of housing? What is the difference between subsidized housing for low income and workforce housing? Why and how should transportation costs factor into housing costs?
- Connectivity. What does connectivity mean? What is the difference between regional, community and neighborhood connectivity? How do these relate to transportation and land use decisions?
- Growth. What are the best levels— city, demographic area, traffic analysis zone—for considering variations between projected growth and actual growth? Should short-term trends drive long-term decisions? What is the potential that transportation and other costs will stimulate in-fill? Is fixing the areas of impact at their 2006 level a reasonable approach for measuring growth?

More Information:

- 1) Attachment - none
- 2) For detailed information contact: Charles Trainor, Director of Planning, at 855-2558 ext. 232 or ctrainor@compassidaho.org

Pc: File 620.3 – Monitoring

T:\FY08\600 Projects\620 Growth Trans Monitoring\Annual Monitoring Report\September 2007 Report\boardworkshop-oct2007.docx

800 S. Industry Way, Ste 100

Meridian, ID 83642

P. 208.855.2558

F. 208.855.2559

www.compassidaho.org

AUGUST 2007 - STAFF ACTIVITY REPORT

PROGRAM NO.	TITLE	LEAD STAFF
601	UNIFIED PLANNING WORK PROGRAM AND BUDGET, DEVELOPMENT, TRACKING AND FEDERAL ASSURANCES	JEANNE URLEZAGA
	<ul style="list-style-type: none"> Received Board of Directors approval of the FY2008 Unified Planning Work Program and Budget-Final at the August Board meeting. Processed and tracked revenue and expenditures associated with Revision 1 of the FY2007 Unified Planning Work Program and Budget. 	
610	SH 44 CORRIDOR PRESERVATION STUDY	DON MATSON
	<ul style="list-style-type: none"> Conducted public workshop on the Middleton route and bypass options on August 22, 2007. Over 150 citizens attended, affirming strong support for a southern bypass. Consultant prepared draft summary of workshop results. Consultant continued progress on several field studies, including traffic analysis, centerline/right-of-way survey, and historic properties analysis. 	
611	US 20/26 CORRIDOR PRESERVATION STUDY	DON MATSON
	<ul style="list-style-type: none"> Corridor Preservation Committee reconvened in August to discuss long-term access management for the corridor, and agreement was reached on an ultimate/buildout solution. A follow-up meeting was scheduled for mid-September. Presented Access Management to the ITD Board in Coeur d' Alene. Responded to inquiries from the general public, and developed newsletter for public distribution. 	
620	GROWTH AND TRANSPORTATION SYSTEM MONITORING	CARL MILLER
	<ul style="list-style-type: none"> Reviewed Second Draft Communities in Motion Monitoring Report with the Regional Technical Advisory Committee. Finalized 2007 Mid-Year Development Monitoring Report for publication. 	
631	TREASURE VALLEY HIGH CAPACITY TRANSIT STUDY	JOHN CUNNINGHAM
	<ul style="list-style-type: none"> Received Final Scope of Work from URS. Set local oversight/policy committee meeting/agenda. Continued work on Task 1 of the Study. 	
647	REGIONAL GROWTH ISSUES AND OPTIONS	CARL MILLER
	<ul style="list-style-type: none"> Reviewed 2007-2040 Economic and Population Forecast with the Regional Technical Advisory Committee and the Demographic Advisory Committee. Researched comparable metropolitan areas for population and employment projection methodologies. Reviewed Growth Driver Report with the Demographic Advisory Committee. Evaluated GIS software and developed data to assist in Build-out Analysis. Began analysis of agency comprehensive plans as requested by the Regional Technical Advisory Committee. 	

PROGRAM NO.	TITLE	LEAD STAFF
653	COMMUNICATIONS AND EDUCATION <ul style="list-style-type: none"> • Updated website, developed news releases, worked with media. • Supported public involvement efforts for transportation projects by attending public meetings of member agencies (ACHD, ITD) and by sending announcements to people in COMPASS database. • Co-hosted information booth at the Western Idaho Fair with Valley Regional Transit and Idaho Smart Growth. Several hundred people were added to our contact database. • Worked with ITD to host a public event with the U.S. Secretary of Transportation, Mary Peters. This may take place in late October (to be confirmed with ITD). • Worked with the agency's legislative advisor to host a legislative reception in early 2008 and to produce the first annual transportation conference next year. • Developing a "scope of work" at the request of the Executive Committee regarding the coordination of communications for construction activities (GARVEE and local road agency projects). 	TERRI SCHORZMAN
655	AMPO TREASURE VALLEY ACCESS MANAGEMENT STRATEGY <ul style="list-style-type: none"> • Received COMPASS Board approval of the Access Management Toolbox & Guidebook. 	JOHN CUNNINGHAM
661	COMMUNITIES IN MOTION <ul style="list-style-type: none"> • Initiated work on compliance supplement needed to meet new financial requirements regarding inflation. • Held a workshop for planning staff of agencies in Canyon County on Thursday, August 30, 2007. The workshop focused on implementation of CIM, including an overview of the "Community Choices" land use scenario, service/transit concepts, timing and funding, implementation of the scenario for transportation/land use interaction, and project prioritization. Ten people attended the workshop. 	CHARLES TRAINOR

PROGRAM NO.	TITLE	LEAD STAFF
685	TRANSPORTATION IMPROVEMENT PROGRAM	TONI TISDALE
	<ul style="list-style-type: none"> • Prepared for the Transportation Management Area Balancing Committee scheduled on September 6, 2007. • Attended the ITD/ACHD monthly coordination meeting. • Met with ACHD staff in preparation of upcoming FY2009-2013 Transportation Improvement Program and Five Year Work Program meetings with local agencies. • Continued contacting agencies through telephone calls to set up meetings with the Transportation Task Force, staff, or Councils regarding priorities for the FY2009-2013 Transportation Improvement Programs. • Met with the following Transportation Task Forces or staff regarding projects for the FY2009-2013 Transportation Improvement Program: Meridian Transportation Task Force, City of Caldwell staff, City of Boise staff, City of Middleton Council, City of Nampa staff, Canyon Highway District Commissioners, Notus-Parma Highway District Commissioners, Canyon County Commissioners and staff, and Nampa Highway District Commissioners. • Met with ITD District 3 staff regarding the application and prioritization process for FY2009-2013 projects. • Met with Valley Regional Transit staff regarding the grant management process. • Met with City of Caldwell staff regarding funding issues with the local portion of the Exit 29 projects. • Participated in a pre-conference regarding the upcoming selection of a consultant for the Amity Road project. • Met with ITD staff regarding mirroring between the local and statewide Transportation Improvement Programs. • Attended the Idaho Transportation Board meeting during the financial development portions on August 16, 2007. • Monitored obligation activity for projects sponsored by COMPASS member agencies. 	
687	TREASURE VALLEY TRUCK FREIGHT TRAVEL STUDY	MARYANN WALDINGER
	<ul style="list-style-type: none"> • Met with appropriate staff at ITD to discuss coordination at the Ports of Entry, Weigh-in-motion and other locations. • Completed the scope of work and budget. • Completed and sent final contracts to consultant. 	
689	MAJOR DESTINATIONS	ROSS DODGE
	<ul style="list-style-type: none"> • Project completed. 	
692	REGIONAL TRANSPORTATION FUNDING INFORMATION	CHARLES TRAINOR
	<ul style="list-style-type: none"> • Researched other regions' financial evaluations. 	
694	HIGH VOLUME INTERSECTION STUDY	DON MATSON
	<ul style="list-style-type: none"> • Consultant generated new traffic counts at each of the intersections and issued two technical memos to COMPASS and project review committee. • Consultant team conducted workshop with Board members on high-volume intersection design alternatives. • Provided requested model forecasts to consultants. • Provided some intersection signalization and geometric data available from ACHD. 	

PROGRAM NO.	TITLE	LEAD STAFF
701	GENERAL MEMBERSHIP SERVICES	CHARLES TRAINOR
	<ul style="list-style-type: none"> • Participated in Blueprint for Good Growth Technical/Steering meetings, including sessions on transit ready development and public outreach. • Produced approximately 13 maps and 2 hours of geographic information system assistance for member agencies on 3 data requests. • Provided building permit and platting information to various agencies. • Provided ACHD and consultants working on the Southwest Boise Transportation Plan and Kuna Mora Road Corridor model forecasts using land use assumptions that include some potential planned community development. • Met with ITD, ACHD and City of Eagle regarding the potential development in the north foothills, status of current studies, and completed tasks. • Met with City of Eagle planners to discuss other north foothills land use assumptions to test in the travel demand forecast model. • Provided member agencies and consultants with model networks and other information for various studies. 	
703	GENERAL PUBLIC SERVICES	CHARLES TRAINOR
	<ul style="list-style-type: none"> • Provided information to the public on demographics and traffic issues. • Produced approximately 17 maps and 1 hour of geographic information system assistance to the general public on 6 requests. 	
705	TRANSPORTATION LIAISON SERVICES	MATT STOLL
	<ul style="list-style-type: none"> • Participated in the Caldwell Chamber of Commerce Transportation Committee meeting on August 6, 2007 and the Government Affairs Committee on August 23, 2007. • Attended Treasure Valley Air Quality Council meeting on August 7, 2007. • Met with IDEQ, VRT, and ACHD Commuteride staff to discuss possible free alternative transportation options during "bad" air quality days. • Attended Ada County "Growth Management Summit" on August 30, 2007. 	
733	CLEAN CITIES COALITION PARTICIPATION	MARYANN WALDINGER
	<ul style="list-style-type: none"> • No significant activity this month. 	
741	SOUTH MERIDIAN/TEN MILE AREA PLAN	JOHN CUNNINGHAM
	<ul style="list-style-type: none"> • No significant activity this month. 	
751	ACHD WEST BENCH, CIP, 3CRX, FLOATING FEATHER	MARYANN WALDINGER
	<ul style="list-style-type: none"> • No significant activity this month. 	
757	REGIONAL FUNCTIONAL CLASSIFICATION TYPOLOGIES	CHARLES TRAINOR
	<ul style="list-style-type: none"> • No significant activity this month. 	

PROGRAM NO.	TITLE	LEAD STAFF
760	LEGISLATIVE SERVICES <ul style="list-style-type: none"> Participated in relevant activities in support of Board legislative position statements. Tracked and reported significant activity in federal and state transportation-related legislative issues. Attended Boise Metro Chamber of Commerce Congressional Forum for Congressman Sali on August 30, 2007. 	MATT STOLL
762	TRANSIT PERFORMANCE REPORTING <ul style="list-style-type: none"> No significant activity this month. 	JOHN CUNNINGHAM
764	LAND USE/TRANSPORTATION COORDINATION <ul style="list-style-type: none"> Conducted CIM Implementation meeting for Canyon County jurisdictions. Continued involvement in the State Street Coordination Group. Continued to meet with BGG technical group on transit oriented development strategy & related efforts. Nearing completion on Communities in Motion implementation guidebook. Continued efforts to monitor and determine necessity of comment on current development application. 	JOHN CUNNINGHAM
801	STAFF DEVELOPMENT <ul style="list-style-type: none"> Attended Western Planner Conference in North Dakota. 	JEANNE URLEZAGA
820	COMMITTEE SUPPORT <ul style="list-style-type: none"> Held second Joint Technical Committee meeting on growth forecasts and allocations. Provided staff support to the COMPASS Board of Directors and standing committees. 	JEANNE URLEZAGA
836	MODEL MAINTENANCE <ul style="list-style-type: none"> Continued to make improvements to the travel demand forecasting model as identified. Continued testing dynamic traffic assignment (DTA) visual simulation software for planning level studies. Acquired two software packages for temporary use for this testing. Reviewed the Travel Model Improvement Program Peer draft report. Began testing the impacts of the Eagle Road widening project on air quality conformity. Provided requested model forecasts for the Meridian Town Center Project north of the Eagle Road / Fairview Avenue intersection. 	MARYANN WALDINGER
842	CONGESTION MANAGEMENT SYSTEM MAINTENANCE <ul style="list-style-type: none"> No significant activity this month. 	MARYANN WALDINGER
856	TRANSPORTATION STUDIES COORDINATION <ul style="list-style-type: none"> No significant activity this month. 	TONI TISDALE

PROGRAM NO.	TITLE	LEAD STAFF
860	GEOGRAPHIC INFORMATION SYSTEM MAINTENANCE	ROSS DODGE
	<ul style="list-style-type: none"> • Participated in the monthly Ada County Special Interest Group and Canyon County Spatial Data Cooperative meetings. • Continued to correct the geocoding of the building permit data. • Maintained various countywide geographic data layers. • Distributed the monthly data dissemination compact disks to subscribers. • Built a sidewalk data layer for Canyon County. • Created a series of maps for ACCEM . 	
861	ADA COUNTY ORTHOPHOTOGRAPHY	ROSS DODGE
	<ul style="list-style-type: none"> • Sold approximately 3 ortho-photography sections. 	
960	INFORMATION TECHNOLOGY	JEANNE URLEZAGA
	<ul style="list-style-type: none"> • Began the migration process from Novell to Microsoft operating system. • Continued coordination with the IT consultant. • Continued system and software maintenance and updates. 	
991	SUPPORT SERVICES LABOR	JEANNE URLEZAGA
	<ul style="list-style-type: none"> • Attended regular staff meetings and prepared monthly status and quarterly variance reports as required. • Oversaw general administration and personnel. 	

T:\FY07\900 Operations\990 Direct Operations-Maintenance\Board\2007Staff Activity Report\August 2007.doc

SEPTEMBER 2007 - STAFF ACTIVITY REPORT

PROGRAM NO.	TITLE	LEAD STAFF
601	UNIFIED PLANNING WORK PROGRAM AND BUDGET, DEVELOPMENT, TRACKING AND FEDERAL ASSURANCES	JEANNE URLEZAGA
	<ul style="list-style-type: none"> • Processed and tracked revenue and expenditures associated with Revision 1 of the FY2007 Unified Planning Work Program and Budget. • Participated in a federal and state Title VI Review on September 7, 2007. 	
610	SH 44 CORRIDOR PRESERVATION STUDY	DON MATSON
	<ul style="list-style-type: none"> • Completed summary of public workshop on the Middleton route and bypass options (held on August 22, 2007). Presented summary and discussed with City of Middleton. • Consultant continued progress on field studies, including Right-of-Way survey. 	
611	US 20/26 CORRIDOR PRESERVATION STUDY	DON MATSON
	<ul style="list-style-type: none"> • Prepared responses to several Frequently Asked Questions for public release. • Conducted meetings with separate agencies regarding interim solutions. • Rescheduled Corridor Preservation Committee meeting slated for September to October 17, 2007 to discuss and resolve interim policy and design issues. 	
620	GROWTH AND TRANSPORTATION SYSTEM MONITORING	CARL MILLER
	<ul style="list-style-type: none"> • Developed final draft Communities in Motion Monitoring Report and presented it to the Regional Technical Advisory Committee. 	
631	TREASURE VALLEY HIGH CAPACITY TRANSIT STUDY	JOHN CUNNINGHAM
	<ul style="list-style-type: none"> • Continued meeting and consulting with the Downtown Policy Advisory Committee (DPAC). • Initiated work on planning tasks 2-4. • Attended New Starts conference in St. Louis. 	
647	REGIONAL GROWTH ISSUES AND OPTIONS	CARL MILLER
	<ul style="list-style-type: none"> • Reviewed Population Forecast and comparative city methodology analysis with the Regional Technical Advisory Committee. • Developed data and methodology for build-out analysis. • Converted to UPlan 2.6 version for land use modeling. • Attended Travel Model Improvement Program (TMIP) webinar regarding land use modeling. • Coordinated with Boise State University and ITD on funding of land use model data development proposal. 	

PROGRAM NO.	TITLE	LEAD STAFF
653	COMMUNICATIONS AND EDUCATION	TERRI SCHORZMAN
	<ul style="list-style-type: none"> • Updated website, developed news releases, worked with media. • Supported public involvement efforts for transportation projects by attending public meetings of member agencies (ACHD, ITD) and by sending announcements to people in COMPASS database. • Worked with ITD to host a public event with the U.S. Secretary of Transportation, Mary Peters. This may take place in late October (to be confirmed with ITD). • Worked with the agency's lobbying consultant to host a legislative reception in early 2008 and to produce the first annual transportation conference next year. • Developing a "scope of work" at the request of the Executive Committee regarding the coordination of communications for construction activities (GARVEE and local road agency projects). 	
655	AMPO TREASURE VALLEY ACCESS MANAGEMENT STRATEGY	DON MATSON
	<ul style="list-style-type: none"> • Initiated implementation discussions regarding COMPASS staff transition. • Initiated discussions with member agencies to begin implementation of Toolkit. 	
661	COMMUNITIES IN MOTION	CHARLES TRAINOR
	<ul style="list-style-type: none"> • Continued work on compliance supplement needed to meet new financial requirements regarding inflation. • Developed presentations for use at Association of Metropolitan Planning Organizations conference. 	
685	TRANSPORTATION IMPROVEMENT PROGRAM	TONI TISDALE
	<ul style="list-style-type: none"> • Hosted the Transportation Management Area Balancing Committee on September 6, 2007. • Attended the ITD/ACHD monthly coordination meeting. • Continued contacting agencies through telephone calls to set up meetings with the Transportation Task Force, staff, or Councils regarding priorities for the FY2009-2013 Transportation Improvement Programs. • Met with the following Transportation Task Forces or staff regarding projects for the FY2009-2013 Transportation Improvement Program: Garden City Planning and Zoning, Golden Gate Highway District, Meridian Task Force, Notus City Council, Valley Regional Transit Board, and Eagle Task Force. • Met with City of Caldwell staff regarding funding issues with the local portion of the Exit 29 projects. • Participated in selection process of a consultant for the Amity Road project. • Prepared documents for approvals of the mirroring changes between the local and statewide Transportation Improvement Programs. • Attended the Idaho Transportation Board meeting on September 20, 2007. • Met with staff from Nampa Highway District regarding financing reporting mechanisms. • Met with staff from Nampa Highway District and ITD regarding cracking on a recent overlay project. • Started preparations for tracking projects scheduled for funding in FY2008. • Initiated development of grant announcement for FTA transit funds available through Valley Regional Transit. 	

PROGRAM NO.	TITLE	LEAD STAFF
687	TREASURE VALLEY TRUCK FREIGHT TRAVEL STUDY <ul style="list-style-type: none"> Reviewed draft truck survey and commercial vehicle survey. Began working on Right of Way encroachment permits with ITD District 3 staff. 	MARYANN WALDINGER
689	MAJOR DESTINATIONS <ul style="list-style-type: none"> Project completed. 	ROSS DODGE
692	REGIONAL TRANSPORTATION FUNDING INFORMATION <ul style="list-style-type: none"> Developed information on public transit financing and expenditures for neighboring states and other urbanized area providers in Idaho. Updated data used to estimate potential revenue from a number of tax/fee mechanisms. 	CHARLES TRAINOR
694	HIGH VOLUME INTERSECTION STUDY <ul style="list-style-type: none"> Reviewed and supplied numerous comments to consultant on Draft Implementation Guide for High Volume Intersections. Provided additional data from Traffic Demand Model to consultants. 	DON MATSON
701	GENERAL MEMBERSHIP SERVICES <ul style="list-style-type: none"> Participated in Blueprint for Good Growth Technical/Steering and Consortium meetings, including sessions on transit ready development and public outreach. Produced approximately 39 maps and 5 hours of geographic information system assistance for member agencies on 5 data requests. Provided building permit and platting information to various agencies. Provided member agencies and consultants with model networks and other information for various studies. Met with Boise staff to discuss data needs in support of the upcoming comprehensive plan update. Began work on amendments to <i>Communities in Motion</i> and the FY2008-2012 Northern Ada County Transportation Improvement Program regarding improvements to Eagle Road through STAR legislation. 	CHARLES TRAINOR
703	GENERAL PUBLIC SERVICES <ul style="list-style-type: none"> Provided information to the public on demographics and traffic issues. Produced approximately 76 maps and 52 hours of geographic information system assistance to the general public on 4 requests. Presented <i>Communities in Motion</i> to the Women in Transportation Seminar on September 26, 2007. 	CHARLES TRAINOR

PROGRAM NO.	TITLE	LEAD STAFF
705	TRANSPORTATION LIAISON SERVICES	MATT STOLL
	<ul style="list-style-type: none"> • Participated in the Caldwell Chamber of Commerce Government Affairs Committee on September 27, 2007. • Provided an overview of <i>Communities in Motion</i> vision for City of Nampa staff and consultants that are preparing a transportation plan for downtown Nampa. • Met with a work group to discuss improved processes for coordinating construction projects over next several years. Developed basic options and funding estimates for presentation to the Board. • Attended City of Boise Mayor's State of the City Address on September 27, 2007. 	
733	CLEAN CITIES COALITION PARTICIPATION	MARYANN WALDINGER
	<ul style="list-style-type: none"> • No significant activity this month. 	
741	SOUTH MERIDIAN/TEN MILE AREA PLAN	JOHN CUNNINGHAM
	<ul style="list-style-type: none"> • No significant activity this month. 	
751	ACHD WEST BENCH, CIP, 3CRX, FLOATING FEATHER	MARYANN WALDINGER
	<ul style="list-style-type: none"> • Participated in public outreach meetings for Fairview corridor and SW Boise Area studies. 	
757	REGIONAL FUNCTIONAL CLASSIFICATION TYPOLOGIES	CHARLES TRAINOR
	<ul style="list-style-type: none"> • No significant activity this month. 	
760	LEGISLATIVE SERVICES	MATT STOLL
	<ul style="list-style-type: none"> • Participated in relevant activities in support of Board legislative position statements. • Tracked and reported significant activity in federal and state transportation-related legislative issues. • Presented Communities in Motion and transportation funding challenges to the Senate Treasure Valley Transportation Taskforce on September 7, 2007. • Attended Boise Metro Chamber of Commerce State and Federal Legislative Committee throughout the month. 	
762	TRANSIT PERFORMANCE REPORTING	JOHN CUNNINGHAM
	<ul style="list-style-type: none"> • Developed new strategy in light of staffing changes at VRT. 	
764	LAND USE/TRANSPORTATION COORDINATION	JOHN CUNNINGHAM
	<ul style="list-style-type: none"> • Released Administrative Draft of <i>Communities in Motion</i> Implementation Guidebook. • Continued to meet with BGG technical group on transit oriented development strategy & related efforts. • Continued efforts to monitor and determine necessity of comment on current development application. • Completed reviews of the Star and Eagle Comprehensive Plans. • Continued work on developing a regional GIS-based comprehensive plan map and assumptions to use in calculating population, housing and employment based on these comprehensive plans. 	

PROGRAM NO.	TITLE	LEAD STAFF
801	STAFF DEVELOPMENT	JEANNE URLEZAGA
	<ul style="list-style-type: none"> • Staff attended the following courses in September: <ul style="list-style-type: none"> ➤ Dreamweaver Introduction to support website posting and maintenance ➤ What You Need to Know About Public Records and Open Meetings in Idaho ➤ Intro to Application Development with Cube Voyager ➤ Intermediate Application Development and Scripting with Cube Voyager ➤ FTA - Travel Forecasting Workshops for New and Small Starts 	
820	COMMITTEE SUPPORT	JEANNE URLEZAGA
	<ul style="list-style-type: none"> • Held Interagency Consultation Committee to request approval of the addition of Eagle Road widening project from I-84 to ½ mile north of Fairview Avenue. • Provided staff support to the COMPASS Board of Directors and standing committees. 	
836	MODEL MAINTENANCE	MARYANN WALDINGER
	<ul style="list-style-type: none"> • Continued to make improvements to the travel demand forecasting model as identified. • Worked with consultants on dynamic traffic assignment (DTA) visual simulation software for planning level studies. Choose and purchased one software package. • Completed testing the impacts of the Eagle Road widening project on air quality conformity and subsequent amendments to CIM and the FY 2008-2012 TIP. • Provided requested model forecasts for the Meridian Town Center Project north of the Eagle Road / Fairview Avenue intersection. • Provided requested model forecasts for the Cloverdale Concept Project. • Provided requested model forecasts for various roadway project alternatives for the Connecting Idaho Partners (GARVEE projects). 	
842	CONGESTION MANAGEMENT SYSTEM MAINTENANCE	MARYANN WALDINGER
	<ul style="list-style-type: none"> • Began reviewing 2007 travel time data collected this spring. 	
856	TRANSPORTATION STUDIES COORDINATION	TONI TISDALE
	<ul style="list-style-type: none"> • No significant activity this month. 	
860	GEOGRAPHIC INFORMATION SYSTEM MAINTENANCE	ROSS DODGE
	<ul style="list-style-type: none"> • Participated in the monthly Ada County Special Interest Group and Canyon County Spatial Data Cooperative meetings. • Maintained various countywide geographic data layers. • Distributed the monthly data dissemination compact disks to subscribers. • Built a sidewalk data layer for Canyon County and various data layers for the surrounding counties. • Created a series of maps for ACCEM exercise. 	
861	ADA COUNTY ORTHOPHOTOGRAPHY	ROSS DODGE
	<ul style="list-style-type: none"> • Sold approximately 8 ortho-photography sections. 	

PROGRAM NO.	TITLE	LEAD STAFF
960	INFORMATION TECHNOLOGY	JEANNE URLEZAGA
	<ul style="list-style-type: none"> • Continued the migration process from Novell to Microsoft operating system. • Continued coordination with the IT consultant. • Continued system and software maintenance and updates. 	
991	SUPPORT SERVICES LABOR	JEANNE URLEZAGA
	<ul style="list-style-type: none"> • Began preparation for the FY2007 annual audit and year-end close. • Attended regular staff meetings and prepared monthly status and quarterly variance reports as required. • Oversaw general administration and personnel. 	

T:\FY08\900 Operations\990 Direct Operations-Maintenance\Board\2008Staff Activity Reports\September 2007.doc

MEMORANDUM

TO: Community Planning Association Board of Directors

FROM: Don Matson, Principal Planner

DATE: September 4, 2007

RE: Status Report – Corridor Studies

ACTION REQUESTED:

None. Information only.

BACKGROUND:

Staff is currently co-managing two corridor studies—S.H. 44 and U.S. 20/26—with the Idaho Transportation Department (ITD).

STATUS:**U.S. 20/26 Corridor Study:**

- Reviewed and provided comment to the consultants on Wetland Delineation Report.
- The Corridor Preservation Committee (CPC) reconvened on August 22, 2007 to discuss access management and the ultimate design of the highway. Committee reached agreement on the ultimate/build-out policy and design.
- A follow-up meeting of the CPC was scheduled for September 12, 2007 to discuss interim measures for access policy and roadway design.
- Responded to citizen inquiries and prepared a newsletter for distribution to the general public.

S.H. 44 Corridor Study:

- A public workshop was held in Middleton on August 22, 2007 to discuss a bypass around the downtown area. Invitations were mailed to Middleton postal customers and other interested parties along the corridor. A display ad was placed in the local paper. Over 150 persons attended the meeting.
- At the public workshop, over 125 persons provided written comments. The comments received confirmed strong support for the southern bypass, including support for the route conserved by the City of Middleton.
- Land survey, cultural resource site investigations, and other studies continued on the corridor.

DM:nb T:\FY07\600 Projects\610 SH 44\Monthly Status Reports to Board\September-2007.doc

800 S. Industry Way, Ste 100

Meridian, ID 83642

P. 208.855.2558

F. 208.855.2559

www.compassidaho.org

MEMORANDUM



TO: Community Planning Association Board of Directors

FROM: Don Matson, Principal Planner

DATE: October 1, 2007

RE: Status Report – Corridor Studies

ACTION REQUESTED:

None. Information only.

BACKGROUND:

Staff is currently co-managing two corridor studies—S.H. 44 and U.S. 20/26—with the Idaho Transportation Department (ITD).

STATUS:**U.S. 20/26 Corridor Study:**

- A follow-up meeting of the Corridor Preservation Committee (CPC) was scheduled in September 2007 to discuss interim measures for access policy and roadway, but because of schedule conflicts it was postponed to the next available date, October 17, 2007. Meetings with affected member agencies continued, and others were scheduled for early October 2007.
- Prepared answers to numerous Frequently Asked Questions that arose from last public workshop (May 2007). Some of the answers to be included in upcoming newsletter, others to be posted on project website (hosted by ITD).

S.H. 44 Corridor Study:

- Completed summary of August 22, 2007 workshop in Middleton regarding a bypass/alternate route. Provided report to and discussed with City.
- Traffic capacity analysis and draft report were completed in September 2007. Roadway design alternatives were also identified, along with analysis criteria.
- Consultants continued the right-of-way survey, cultural resource site investigations, and other studies on the corridor. Consultant completed studies of over half of the cultural/historical sites (104) on the corridor.

DM:nb Task\FY08\600 Projects\610 SH 44\Board_Status_Reports\October-2007.doc

800 S. Industry Way, Ste 100

Meridian, ID 83642

P. 208.855.2558

F. 208.855.2559

www.compassidaho.org



COMPASS
COMMUNITY PLANNING ASSOCIATION
of Southwest Idaho

MEMORANDUM

TO: Community Planning Association Board of Directors

FROM: MaryAnn Waldinger, Principal Planner

DATE: October 2, 2007

RE: Status Report – August and September Air Quality Efforts

ACTION REQUESTED:

None. Information only.

BACKGROUND:

The information below provides an update on Treasure Valley air quality.

STATUS:

AUGUST AIR QUALITY MONITORING

- The Idaho Department of Environmental Quality reported two days with Treasure Valley air quality levels in the unhealthy for sensitive group category during the month of August 2007.
 - Two of the unhealthy for sensitive group air quality days were attributable to fine particulate (PM_{2.5}) levels recorded in Ada County.

- The Idaho Department of Environmental Quality reported Treasure Valley air quality levels in the moderate category for 16 days during the month of August 2007.
 - Two of the moderate air quality days were attributable to ozone levels recorded in Ada County.
 - Two of the moderate air quality days were attributable to coarse particulate (PM₁₀) recorded in Ada County.
 - One of the moderate air quality days were attributable to fine particulate (PM_{2.5}) recorded in Ada County.
 - Two of the moderate air quality days were attributable to coarse particulate (PM₁₀) recorded in Canyon County.
 - Nine days of the moderate air quality days were attributable to fine particulate (PM_{2.5}) levels recorded in Canyon County.

SEPTEMBER AIR QUALITY MONITORING

- The Idaho Department of Environmental Quality reported two days with Treasure Valley air quality levels in the unhealthy for sensitive group category during the month of September 2007.
 - Two of the unhealthy for sensitive group air quality days were attributable to fine particulate (PM_{2.5}) levels recorded in Ada County.

800 S. Industry Way, Ste 100

Meridian, ID 83642

P. 208.855.2558

F. 208.855.2559

www.compassidaho.org

- The Idaho Department of Environmental Quality reported Treasure Valley air quality levels in the moderate category for 12 days during the month of September 2007.
 - Two of the moderate air quality days were attributable to ozone levels recorded in Ada County.
 - Seven of the moderate air quality days were attributable to fine particulate (PM_{2.5}) recorded in Ada County.
 - One of the moderate air quality days were attributable to coarse particulate (PM₁₀) recorded in Canyon County.
 - Two days of the moderate air quality days were attributable to fine particulate (PM_{2.5}) levels recorded in Canyon County.

MW:nb T:\FY07\900 Operations\990 Direct Operations-Maintenance\Board\2007 AQ Updates\AQ Update8-2007.doc



MEMORANDUM

TO: Community Planning Association Board of Directors

FROM: Toni Tisdale, Principal Planner

DATE: September 26, 2007

RE: Status Report – Current Transportation Project Information

ACTION REQUESTED:

None. Information only.

BACKGROUND:

The information below provides a monthly update on transportation trends, issues, and current project status.

STATUS:

Following are the most recent two months reported statistics compared to the same months a year ago:

<i>Boise Air Terminal</i>	<i>July 2007</i>	<i>July 2006*</i>	<i>% Change</i>
Monthly Air Passengers (Inbound and Outbound)	324,955	310,717	4.58%
Monthly Air Freight (Inbound and Outbound) (tons)	3,754	3,699	1.49%
<i>Public Transportation Monthly Ridership</i>	<i>July 2007</i>	<i>July 2006*</i>	<i>% Change</i>
ACHD VanPool (Trips)	15,624	15,259	2.39%
Valley Regional Transit Boise Urbanized Area Services	70,937	66,763	6.25%
Valley Regional Transit Nampa Urbanized Area Services	9,066	9,732	-6.84%
<i>Total</i>	95,627	91,754	4.22%
<i>Other Public Transportation Reporting Average Hourly Ridership</i>	<i>July 2007</i>	<i>July 2006*</i>	<i>% Change</i>
Valley Regional Transit Boise Urbanized Area Services	14.7	14.1	4.26%
Valley Regional Transit Nampa Urbanized Area Services	11.1	13.6	-18.38%

*There is a possibility that previously reported statistics do not match those in this report due to data finalization.

<i>Boise Air Terminal</i>	<i>August 2007</i>	<i>August 2006*</i>	<i>% Change</i>
Monthly Air Passengers (Inbound and Outbound)	323,213	314,513	2.77%
Monthly Air Freight (Inbound and Outbound) (tons)	N/A	N/A	N/A
<i>Public Transportation Monthly Ridership</i>	<i>August 2007</i>	<i>August 2006*</i>	<i>% Change</i>
ACHD VanPool (Trips)	17,513	17,665	-0.86%
Valley Regional Transit Boise Urbanized Area Services	81,868	80,121	2.18%
Valley Regional Transit Nampa Urbanized Area Services	10,715	11,349	-5.59%
<i>Total</i>	110,096	109,135	0.88%
<i>Other Public Transportation Reporting</i>			
<i>Average Hourly Ridership</i>	<i>August 2007</i>	<i>August 2006*</i>	<i>% Change</i>
Valley Regional Transit Boise Urbanized Area Services	11.8	13.5	-12.59%
Valley Regional Transit Nampa Urbanized Area Services	15.4	15	2.67%

*There is a possibility that previously reported statistics do not match those in this report due to data finalization.

STATUS OF MAJOR PROJECTS

**** ACHD information as of September 27, 2007, ITD information as of October 2, 2007.***

<i>Project</i>	<i>Sponsor</i>	<i>Comments*</i>
I-184, Intelligent Transportation System (ITS) Connector, Boise	ITD	This work consists of installing conduit, electronics, and fiber optics to interconnect the Intelligent Traffic Systems on I-184. This project was substantially complete in September 2007.
I-84B, Blaine Street and Cleveland Boulevard in Caldwell	ITD	This is a pavement rehabilitation project on Cleveland Boulevard from 10 th Avenue to South Georgia Avenue, and Blaine Street from South Georgia Avenue to 10 th Avenue. This project began on September 4, 2007. The contractor expects to have the entire project mainline paved by October 9, 2007, followed by the approach grading and paving. Cleveland Boulevard will be closed at 10 th Avenue, and eastbound traffic will be detoured onto Dearborne Street, except on Cleveland Boulevard between 10 th and 13 th Streets. Traffic on Blaine Street is reduced to one lane and temporary traffic signals are in use at Blaine Street and 21 st Street.
I-84B, Blaine/Cleveland Curb Replacement	Caldwell	This project was a curb and gutter replacement project through the City of Caldwell. It was substantially complete in mid-September 2007.
I-84, Broadway Interchange to Gowen Interchange westbound and eastbound, and Gowen Interchange to Isaacs Canyon Interchange	ITD	This project will rehabilitate the pavement on I-84 between Broadway Interchange and Isaacs Canyon Interchange by crack and seat of the existing concrete pavement followed by an overlay with minor shoulder work. The contract was awarded August 12, 2007. Traffic will be routed through the project between Broadway Avenue and Gowen Road. Traffic will be reduced to one lane in each direction between Gowen Road and Isaacs Canyon. Two-thirds of the project paving is anticipated to be completed by November 2007 with a final project completion expected in July 2008.

<i>Project</i>	<i>Sponsor</i>	<i>Comments*</i>
I-84, Cole Interchange to Orchard Interchange, Orchard Interchange to Vista Interchange, Vista Interchange to Broadway Interchange, Cole to Broadway Sound Walls, Orchard Street Interchange	ITD	The consultant is currently working on the design of the sound wall, sub-surface investigations, and final design.
I-84, Franklin Interchange (Exit 29), Caldwell	ITD	This project consists of reconstructing the existing Franklin Interchange at Exit 29. The new facility will consist of a six-lane bridge, double-left turn bays on the freeway ramps, with five-lane approaches. The first half of the new structure was completed in September 2007, and traffic was shifted to the new structure. Demolition of the old bridge commenced on September 17, 2007 and was completed within four days. Traffic control for this project is planned in numerous phases. Typically, the shoulders on I-84 will be closed with occasional lane closures and restrictions, and occasional freeway closures. These closures will be limited to blasting and setting of girders. Throughout construction, traffic will be shifted or flagged as necessary on US 20/26. This project has a projected completion date of September 2008.
I-84, Garrity Interchange to Meridian Interchange	ITD	This Connecting Idaho Partners project is a major widening and reconstruction project located on I-84 between the Garrity Interchange and Meridian Interchange. Multiple construction projects are being developed with the following dates expected for the Plans, Specifications, and Estimates packages: <ol style="list-style-type: none"> 1. Milling and eastbound lane widening: October 2007 2. Ten Mile Creek Structure – November 2007 3. Traffic Control – November 2007 4. Intelligent Transportation System – January 2008 5. Median Construction – February 2008 6. Mainline Reconstruction - March 2008 7. Black Cat & Robinson Road Bridge Replacements - March 2008
I-84 Joint Replacement, Various sections in Ada, Canyon, and Payette Counties	ITD	This project is substantially complete.
I-84, Karcher Interchange to Five Mile Study	ITD	No change. Connecting Idaho Partners established the logical eastern and western termini for this corridor. The western terminus is Karcher Interchange (formerly Junction at SH-44) and the eastern terminus is at the transition from ten lanes to eight lanes near the Maple Grove Road separation. Traffic analysis is being conducted in the interim to establish the number of lanes needed.

<i>Project</i>	<i>Sponsor</i>	<i>Comments*</i>
I-84 and I-84B, Karcher Interchange, Karcher Junction to Nampa Boulevard and Caldwell Boulevard, in Nampa	ITD	The Interchange is open to traffic. The work from Karcher to Flamingo is complete. The first lift of asphalt on the eastbound travel lanes from Flamingo to Canyon is also complete. Westbound construction, through the same area began on August 27, 2007. This construction includes excavating to sub-grade and building the road back to grade level. This is the last section of the roadway for this project. The utility work was completed on August 24, 2007. Curb, gutter, and sidewalk work will continue during the day and will reduce westbound traffic to one lane. The roadway construction is being done at night between the hours of 8:00 p.m. and 6:00 a.m. Night-time traffic control reduces traffic to two lanes. This project expects completion in late fall 2007.
I-84, Locust Grove Grade Separation, Meridian	Meridian ACHD ITD	This project is to build a new overpass on I-84 between the Meridian Interchange and the Eagle Road Interchange. The roadway to the north and south of I-84 is up to sub-grade and illumination pole bases and curb and gutter are placed. Bridge girders and deck formwork are in place. The deck reinforcement is currently being installed. The deck was finished in September 2007 with asphalt paving expected in early October 2007. The inside lanes of I-84 in both directions will remain closed until fall 2007.
I-84, Orchard Street to Gowen Road Interchange Study	ITD	This project is a Concept/NEPA study. The draft Finding of No Significant Impact (FONSI) is pending submittal to ITD District 3. The FONSI is anticipated in late October 2007.
I-84 and SH-55 (Eagle Road) Westbound Off-Ramp Widening	ITD	This project is substantially complete.
I-84, Sand Hollow to Caldwell (three companion projects)	ITD	This is an 8.7 mile rehabilitation and restoration project between mileposts 17.6 and 26.34 (eastbound and westbound). Work on the westbound side of the highway is complete. Eastbound traffic has been crossed over to the westbound side of the highway in order to move traffic around the construction area. Completion is expected by the end of October 2007.
I-84, Ten Mile Road Emergency Girder Repairs	ITD	No change. This is an emergency repair project to repair damaged girders on the Ten Mile Road structure. Bids for this project will open on September 25, 2007. Work is expected to begin in October 2007.
I-84, Ten Mile Interchange	ITD	This project is a new Interchange. The revised draft Environmental Assessment was submitted to the Federal Highway Administration. The public hearing is expected in December 2007. The project is on schedule for delivery of the Plan, Specifications, and Estimates package in February 2009.
Intersection Chicago Street and 21 st Avenue	City of Caldwell	No change. The Plans, Specifications, and Estimates package was submitted on August 1, 2007. The project is awaiting advertisement.
Intersection Franklin and 21 st Avenue and 21 st Avenue from Chicago to Franklin	City of Caldwell	No change. City of Caldwell staff is working on breaking this project into smaller phases to accommodate available funding.

<i>Project</i>	<i>Sponsor</i>	<i>Comments*</i>
Maple Grove, Franklin to Fairview	ACHD	The contractor is placing concrete on the north half of the Fairview and Maple Grove intersection. Once complete, the intersection pavement markings and signs will be installed and the permanent signal function established. The intersection should open October 6, as scheduled. During October, the contractor will move to the east half of Maple Grove to begin work on the asphalt paving, sidewalk, light pole bases, curb and gutter. Work on the east half of the irrigation structures will begin when water is out of the canals.
SH-16, I-84 to SH-44 Environmental Study	ITD	This project will preserve a corridor to provide for a future extension of SH 16. Level 2 Concept Alternatives Screening scheduled for October 4 and 5, 2007. Public Information Meeting scheduled for November 1, 2007. Environmental Impact Statement, Finding of No Significant Impacts, and Record of Decision in FY2009.
SH-21, Grand Forest Drive Turn Bay	ITD	This project will widen SH 21 to allow for a left-turn bay into Grand Forest Drive. Southbound right-turn bays will be added at Lake Forest and Grand Forest. Construction started August 17, 2007. The contractor initially paved the turn bay on September 6, 2007. However, the pavement did not meet specification. Therefore, the pavement had to be removed and section repaved September 24 and 25, 2007. Traffic control consists of channelization with two-way traffic being maintained most times. Occasional flagging of the temporary lane closures will occur. Completion is expected in early October 2007.
SH-44, Junction SH-55 to Glenwood and State Street to Chinden	ITD	The SH 44 companioned pavement rehabilitation projects are at the concept stage. The Plans, Specifications, and Estimates package is expected in March 2008.
SH-45, Melba Road to Deer Flat Road	ITD	This is a pavement preservation project. Completion of the Plans, Specifications, and Estimates package is expected soon with advertisement towards the end of 2007.
SH-55, Eagle Road Automated Traffic Management System (ATMS)	ITD	This project will interconnect all signals on Eagle Road, achieving better traffic progression and reduced congestion. The Plans, Specifications, and Estimates package is being finalized with submittal expected by the end of October 2007.
US 20/26, Broadway Avenue from Rossi Street to Ridenbaugh Canal Bridge	ITD	This is a pavement rehabilitation project located on US 20/26 (Broadway Avenue) between Rossi Street and the Ridenbaugh Canal. Environmental Clearance (Categorical Exclusion) was completed in September 2007 and Final Design Review is expected in October 2007. Estimated Plans, Specifications, and Estimates package submittal is expected in December 2007.

<i>Project</i>	<i>Sponsor</i>	<i>Comments*</i>
US 20/26, Cloverdale Road to Hewlett Packard Main Entrance	ITD	This project consists of widening US 20/26 (Chinden Boulevard) from a rural two-lane facility to an urban five-lane facility completed with shoulder and sidewalk between Cloverdale and Five Mile Roads. The contractor has paved most of the US 20/26 portion of the project. They are nearing the completion now of the "cast in place" guardrail. Once complete, work on the frontage road will be completed. Traffic control consists of channelization with two-way traffic at most times. Temporary lane closures are anticipated; however, during off-peak hours. The western portion of Joplin Road will remain closed for the duration of the project. This project is scheduled to be complete in October 2007.
US 20, Junction US 95 to Notus East City Limits	ITD	Construction on this project is anticipated to begin next calendar year, due to the contractor's schedule. The project must begin by April 1, 2008.
US 95 (off system), Golden Gate Canal to D Avenue in Wilder	Wilder	This is an enhancement project to add sidewalks and safety markings for pedestrian safety. The first bid opening in October 2006 came in at 152% of the engineer's estimate. The City decided to re-bid the project. The second bid came in at 140% of the engineer's estimate in March 2007. The revised Plans, Specifications, and Estimates package was submitted to ITD Roadway Design on August 3, 2007. The project was advertised in September 2007 with a bid opening scheduled for October 16, 2007.
US 95, Parma Business District and 4 th Street to Roswell Boulevard Sidewalk	ITD/Parma	These FY2008 companioned State and Enhancement projects will mill and inlay sidewalks through Parma and address Americans with Disabilities Act (ADA) issues and lighting from 4 th Street to Roswell Street in Parma. Final design is complete. The Plans, Specifications, and Estimates package is anticipated during the first quarter State FY2008.

Other – Maintenance

Statewide Durable Pavement Markings – No change. This project will install durable pavement markings on select sections of highway throughout the state. The project duration is five years. The materials will be installed this year and monitored for four years for reflectivity compliance. Work started on May 5, 2007. Currently, a change order is in process to include Durable Pavement Markings on SH-52.

pc: 685.01 and 685.02

TT: nb T:\FY08\600 Projects\685 TIP\Monthly Status Report\0710.doc

DEMOGRAPHIC ADVISORY COMMITTEE

ITEM VI-E

Attendance List of Members

<i>Member Agency/Name</i>	<i>Jan '07 No Mtg</i>	<i>Feb '07</i>	<i>Mar '07 No Mtg</i>	<i>Apr '07 No Mtg</i>	<i>May '07</i>	<i>June '07 No Mtg</i>	<i>July '07 No Mtg.</i>	<i>Aug '07</i>	<i>Sept '07 No Mtg</i>	<i>Oct '07</i>	<i>Nov '07</i>	<i>Dec '07</i>	<i>TOTAL</i>
General Members													
ACCHD/ <i>T. Richard or Kathy Knapp</i>		1			1			1					3
ACHD/ <i>C. Richardson</i>		1			1								2
Ada County/ <i>L. Toombs</i>					1			1					2
BSU/ <i>S. Mason</i>		1			1			1					3
Canyon Co. Dev. Services / <i>B. Le Compte</i>					1								1
City of Boise/ <i>J. Tomlinson</i>		1			1			1					3
City of Caldwell/ <i>B. Billingsley</i>		1			1			1					3
City of Eagle/ <i>N. Baird Spencer</i>					1			1					2
City of Garden City/ <i>J. Thornborrow</i>					1			1					2
City of Kuna/ Vacant		1						1					2
City of Meridian/ <i>M. Ellsworth</i>		1			1			1					3
City of Middleton/ <i>M. Berent</i>		1						1					2
City of Nampa/ <i>N. Holm</i>		1			1								2
City of Star/ <i>M. Shaw Taylor</i>					1								1
IDEO/ <i>J. Garcia</i>		1			1			1					3
Public Participation Committee/ <i>D. Smith</i>													0
Valley Regional Transit/ <i>K. Fairless</i>					1								1
Ex officio Members													
Chamber of Commerce - Ada County/ <i>P. Hiller</i>													0
Chamber of Commerce- Canyon Co./ <i>E. Shannon</i>								1					1
COMPASS/ <i>C. Trainor</i>		1			1			1					3
Development Community - Ada County/ <i>M. Wardle</i>		1			1			1					3
Major Utilities / Idaho Power/ <i>B. Smith</i>					1			1					2
Development Community - Canyon County/ <i>Vacant</i>													0

REGIONAL TECHNICAL ADVISORY COMMITTEE

Attendance List of Members

<i>Member Agency/Name</i>	<i>Jan '07</i>	<i>Feb '07</i>	<i>Mar '07</i>	<i>Apr '07</i>	<i>May '07</i>	<i>June '07</i>	<i>July '07</i>	<i>Aug '07</i>	<i>Sept '07</i>	<i>Oct '07</i>	<i>Nov '07</i>	<i>Dec '07</i>	<i>TOTAL</i>
<i>General Members</i>													
ACCHD/ <i>T. Richard</i>	1	1		1	1	1	1	1	1				8
ACHD/ <i>D. Kostelec</i>	1	1	1	1	1	1	1	1	1				9
Ada County/ <i>D. Gunderson</i>	1	1	1			1	1	1	1				7
BSU/ <i>W. Rearick</i>					1		1		1				3
Canyon County/ <i>J. Wagner</i>	1	1			1		1	1					5
CCDC/ <i>J. Cecil</i>	1	1	1	1	1	1	1	1	1				9
City of Boise/ <i>K. Gallagher</i>	1	1	1	1	1	1	1	1	1				9
City of Caldwell/ <i>G. Law</i>			1	1		1		1	1				5
City of Eagle/ <i>N. Baird-Spencer</i>		1		1	1	1		1	1				6
City of Garden City/ <i>J. Thornborrow</i>			1					1	1				3
City of Kuna/ <i>S. Hasson</i>	1	1	1	1						1			5
City of Meridian/ <i>M. Ellsworth</i>	1	1	1	1	1	1	1	1	1				9
City of Middleton/ <i>M. Berent</i>	1	1	1	1	1	1			1	1			8
City of Nampa/ <i>M. Fuss</i>	1	1		1	1			1	1	1			7
City of Notus/ <i>A. Horn</i>													0
City of Parma/ <i>M. Watson</i>													0
City of Star/ <i>M. Taylor</i>					1								1
IDEQ/ <i>M. DuBois</i>	1	1	1	1		1	1			1			7
Indept. School Dist. of Boise/ <i>S. Stobaugh</i>	1	1	1	1					1	1			6
ITD/ <i>P. Choate</i>		1	1	1	1	1	1	1	1				8
Joint School Dist. #2/ <i>W. Bigham</i>	1	1			1				1				4
Public Participation Committee/ <i>E. Ceja</i>		1		1	1	1	1						5
Valley Regional Transit/ <i>K. Fairless</i>	1		1	1	1	1							5
<i>Ex officio Members</i>													
Central District Health/ <i>R. Howarth</i>		1	1				1	1					4
COMPASS/ <i>T. Tisdale</i>	1	1	1	1	1	1	1	1	1	1			9
Governor's Office/ <i>J. Malmen</i>													0
Greater Boise Auditorium District/ <i>P. Rice</i>													0

TRANSPORTATION MODEL ADVISORY COMMITTEE

Attendance List of Members

<i>Member Agency/Name</i>	<i>Jan '07</i>	<i>Feb '07</i>	<i>Mar '07 No Mta</i>	<i>April '07</i>	<i>May '07 No Mta</i>	<i>Jun '067 No Mta</i>	<i>July '07 No Mta</i>	<i>Aug '07 No Mta</i>	<i>Sept '07 No Mta</i>	<i>Oct '07</i>	<i>Nov '07</i>	<i>Dec '07</i>	<i>TOTAL</i>
General Members													
Ada County/ <i>D. Gunderson</i>	1	1											2
ACHD/ <i>K. Kemmer</i>	1	1		1									3
Canyon County/ <i>J. Maldonado</i>													0
Canyon Hwy Districts/ <i>T. Richard</i>	1	1		1									3
City of Boise/ <i>K. Gallagher</i>	1	1		1									3
City of Meridian/ <i>P. Friedman</i>	1	1		1									3
City of Nampa/ <i>M. Fuss</i>													0
IDEQ/ <i>J. Garcia</i>				1									1
ITD/ <i>K. Sablan</i>	1	1											2
ITD/ <i>G. Sanderson</i>	1	1		1									3
Public Participation Committee/ <i>R. Miller</i>	1	1											2
Small Cities Rep/ <i>V. Brewer</i>				1									1
Valley Regional Transit/ <i>C. Floor</i>	1	1		1									3
Appointed Transportation/Land Use/Air Quality Professionals													
Fehr & Peers/ <i>B. Lane</i>	1	1		1									3
JUB/ <i>J. Rosenlund</i>				1									1
Pline Engineering/ <i>J. Pline</i>	1	1											2
Washington Group/ <i>J. Witt</i>	1	1		1									3
Ex officio Members													
COMPASS/ <i>M. Waldinger</i>		1		1									2

REGIONAL GEOGRAPHIC ADVISORY COMMITTEE

Attendance List of Members

<i>Member Agency/Name</i>	<i>Jan '07 No Mta</i>	<i>Feb '07 No Mta</i>	<i>Mar '07 No Mta</i>	<i>Apr '07 No Mta</i>	<i>May '07</i>	<i>Jun '07 No Mta</i>	<i>July '07 No Mta</i>	<i>Aug '07 No Mta</i>	<i>Sept '07 No Mta</i>	<i>Oct '07</i>	<i>Nov '07 No Mta</i>	<i>Dec '07 No Mta</i>	<i>TOTAL</i>
General Members													
Ada County/ <i>N. Bentley</i>					1					1			2
Ada County Development Services/ <i>R.Fisher</i>										1			
Canyon County Assessors/ <i>C. Lynch</i>					1					1			2
CCDS/ <i>B. Ford-le Compte</i>										1			1
City of Boise/ <i>B. Eggleston</i>					1					1			2
City of Caldwell/ <i>B. Billingsley</i>					1								1
City of Eagle/ <i>B. Vaughan</i>					1					1			2
City of Garden City/ <i>J. Thornborrow</i>					1					1			2
City of Meridian/ <i>S. Lim</i>					1					1			2
City of Middleton/ <i>W. Howell</i>					1					1			2
City of Nampa/ <i>N. Holm</i>					1								1
Public Participation Committee/ <i>M. Gaddi</i>					1					1			2
Valley Regional Transit/ <i>C. Floor</i>					1					1			2
Ex officio Members													
COMPASS/ <i>E. Adolfsen</i>					1					1			2
COMPASS/ <i>R. Dodge</i>					1					1			2

MEMORANDUM

ITEM VI-F



TO: Community Planning Association Board of Directors
FROM: John Cunningham, Principal Planner - Transit
DATE: October 3, 2007
RE: *Status Report - Treasure Valley High Capacity Transit Study*

ACTION REQUESTED:

None. This item is for information only.

BACKGROUND:

Previous reports have included background information. This information can be found here: <http://www.compassidaho.org/planning/studydescriptions8.htm#Circulator>

STATUS:

- The Downtown Policy Advisory Committee met on September 6 and September 24, 2007.
- The Multi-Modal Center, Downtown Circulator and I-84 Corridor Analysis planning tasks have been initiated.
- The 5339 Alternatives Analysis Grant application to fund the I-84 component of the project was unsuccessful. A Transportation, Community and System Preservation Grant for the I-84 Corridor Project is outstanding. Those grants are to be announced in October according to the Federal Highway Administration.
- Additional project information can be found here:
<http://www.compassidaho.org/planning/studydescriptions8.htm#Circulator>

pc: File 631

JC: nb T:\FY07\600 Projects\631 TVHCTS\Documents\Reports\COMPASS Board\sept-aug 2007 Staff Report.doc

800 S. Industry Way, Ste 100

Meridian, ID 83642

P. 208.855.2558

F. 208.855.2559

www.compassidaho.org

MEMORANDUM

TO: Matt Stoll, Executive Director

FROM: Ken Burgess, Veritas Advisors

DATE: October 4, 2007

RE: **Status Report – Legislative Activities for August/September 2007**

ACTION REQUESTED:

None. Information only.

BACKGROUND:

Below is a synopsis of activities and contacts made during the months of August/September 2007 regarding COMPASS' Federal and State legislative priorities.

STATUS:**FEDERAL ISSUES**

1. U.S. Senate: Senator Craig's announcement that he intends to finish his Senate term is relatively good news as it relates to COMPASS' FY 2008 earmarks. As you know, the Senate Transportation Appropriations bill included \$1.27 million for two COMPASS projects -- \$800,000 for Exit 29 Caldwell local improvements, and \$470,000 for VRT's facilities siting plan. Those projects were placed in the bill by Senator Craig. Had Senator Craig resigned it is possible that ALL of Idaho's projects could be stripped from the bill in conference committee. Ken has been in close contact with both Senator Craig's and Senator Crapo's staff regarding these projects in an effort to keep them in the bills.

The full Senate passed the Transportation Appropriations bill the week of September 10, 2007. All Idaho projects are still in the bill, BUT vigilance will be necessary when the conference committee between House and Senate versions occurs. The date for conferencing still has not been determined as of Oct 3, 2007, but is likely to be scheduled for late-October 2007.

Ken hosted Gregg Richard, Senator Crapo's banking committee staffer, for an afternoon while he was in Idaho for the August 2007 recess. They discussed the COMPASS priority projects, toured ValleyRide facility, and dropped by the August 2007 COMPASS Board meeting. The banking committee has authorization authority over public transit. We have been preparing Senator Crapo's staff for impending projects we may seek in the Transportation re-authorization bill.

Ken also met with Corrie Whitman, Senator Craig's Transportation legislative assistant while she was in Boise for the August 2007 recess.

2. House of Representatives: The full House passed its Transportation Appropriations bill in July 2007. There were no COMPASS projects in the House bill. Congressman Simpson and his staff have promised to do what they can to hold the Senate version numbers whole during the conference committee process.

As with most of the Appropriations bills passed by the House, the President has issued a VETO threat on the Transportation funding bill citing budgetary constraints. The transportation bills exceed the President's request by over \$8 billion.

Ken met with Missy Small, Congressman Simpson's Transportation Appropriations assistant while she was in Idaho for the August 2007 recess to reiterate continued support for COMPASS projects in Conference Committee.

Veritas hosted a table at the Boise Metro Chamber's Congressional Forum with Congressman Bill Sali. Congressman Sali dedicated two-thirds of his remarks to the subject of transportation and transportation funding. While he did not endorse a particular strategy for increasing funding, he recognized the need, and is clearly focused on the issue. Mayor Dale, Commissioner Beebe, Commissioner Tilman, Representative Labrador, Robert Simison of Mayor de Weerd's office, Matt Stoll, and Ken Burgess sat at the table.

STATE LEGISLATIVE ISSUES

Matt Stoll and Ken Burgess remain in constant contact with stakeholder groups/lobbyists on a number of Treasure Valley transportation issues beyond the legislative session.

1. Local Option Sales Tax Authority: We continue to play an active role in the Coalition on Public Transportation. The Coalition partners continue to meet with individual legislators, and add to the coalition group.

Obviously this issue will require continued vigilance with many members of the legislature.

Matt and Ken have been involved in numerous meetings in August and September 2007 with the Coalition members. Ken was instrumental in crafting a public opinion poll to gauge Idahoans attitudes and messages on transportation funding. The poll was conducted by Moore Information on Sept 9 and 10, 2007. The results of the poll were made public at the Coalition meeting on October 5, 2007. We will share the pertinent information with the Board, but suffice it to say there is still some work we must do to educate the public on the transportation funding problems in Idaho.

2. GARVEE Funding: Matt and Ken took part in three GARVEE Coalition group meetings in preparation for the 2008 legislative session. This is the same group that has been involved in pressing for GARVEE funding the last two legislative sessions. We began strategizing on how to accomplish continued funding for the program. There appears to be increased resistance from the legislature for additional funding for GARVEE in this coming legislative session, and an aggressive effort may be necessary to accomplish the goal.

As you may be aware, the ITD Board has recommended an additional approval for GARVEE of \$130 million.

3. Public Relations Strategy: Ken, Matt, Terri, and Nancy had an initial planning meeting to discuss a public education campaign for transportation funding issues. We are developing a radio public education campaign regarding funding challenges. We also began the process of arranging a COMPASS Legislative reception to occur in January 2008.
4. Constituent Communication/Outreach Effort: As part of a new, aggressive effort to educate Treasure Valley residents on transportation funding challenges, Ken met with Mayors de Weerd, Nancolas, Dale, Merrill and their staff to begin or improve upon direct communication to their constituents. Ken is assisting each to develop a mechanism for this education effort. Ken will focus on County Commissioners, Highway Districts, and smaller cities in October 2007.

5. Governor's Message: Governor Otter has clearly determined that he needs to take a leadership role on transportation funding issues, by publicly declaring transportation funding a major challenge. The COMPASS Board should re-iterate to your constituents the general message that transportation funding is indeed a major challenge and support the Governor's statements.

We continue to support the Governor's assertion that new funding sources need to be developed in order to meet the transportation needs of the state (and Treasure Valley).

T:\FY07\900 Operations\990 Direct Operations-Maintenance\Board\2007Legislative\reports\August-September 2007.doc



MEMORANDUM

TO: Community Planning Association Board of Directors

FROM: Toni Tisdale

DATE: September 27, 2007

RE: *Status Report – FY2009-2013 Transportation Improvement Program Calendar*

ACTION REQUESTED:

None. Information only.

BACKGROUND:

A calendar of benchmarks and deadlines regarding the Transportation Improvement Program (TIP) is provided each year to simplify the process. There is typically a local TIP Calendar and a separate calendar that includes state-specific deadlines for the development of the Statewide Transportation Improvement Program (STIP).

STATUS:

COMPASS staff developed the *COMPASS FY2009-2013 Transportation Improvement Program Calendar* for preparing the FY2009-2013 Transportation Improvement Programs based on benchmarks set by the Idaho Transportation Department, the meetings of the COMPASS Board of Directors and the Regional Technical Advisory Committee, as well as other pertinent planning dates or meetings. The planning calendar can be viewed via the COMPASS website: <http://www.compassidaho.org/prodserv/trans-tipcalendar.htm>.

This information is for review only as the TIP Calendar can be somewhat fluid as information changes. COMPASS staff will update the website as changes are realized.

pc: 685.01 and 685.02 Transportation Improvement Program

TT:nb T:\FY07\600 Projects\685 TIP\0913TIP\070914mmoBDTIPcal.doc