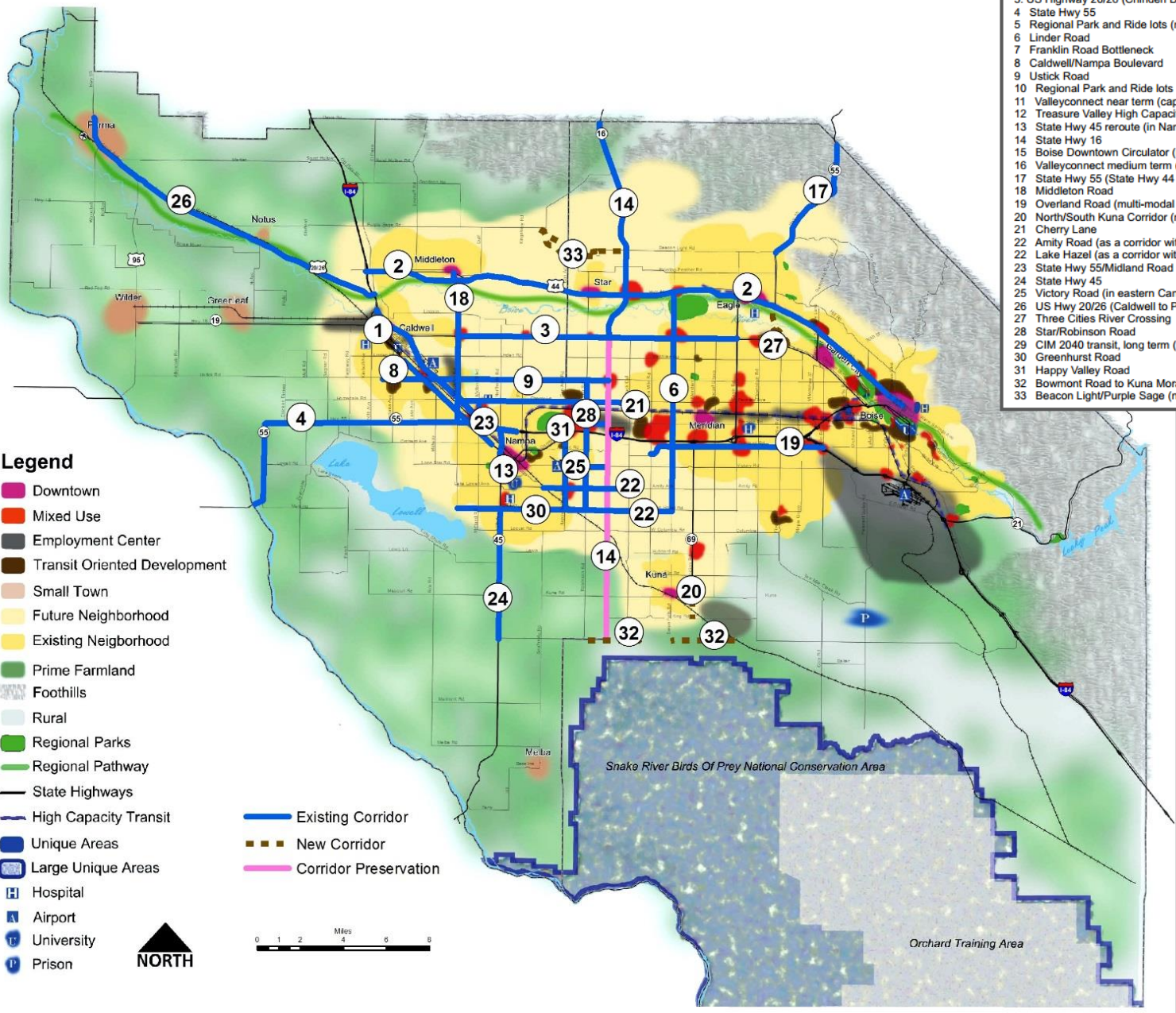


Priority Corridors

- ### PriorityNo Corridor
- 1 Interstate 84
 - 2 State Highway 44/State Street High Capacity Corridor
 - 3 US Highway 20/26 (Chinden Boulevard)
 - 4 State Hwy 55
 - 5 Regional Park and Ride lots (near term improvements, not mapped)
 - 6 Linder Road
 - 7 Franklin Road Bottleneck
 - 8 Caldwell/Nampa Boulevard
 - 9 Ustick Road
 - 10 Regional Park and Ride lots (medium term improvements, not mapped)
 - 11 Valleyconnect near term (capital/operating, not mapped)
 - 12 Treasure Valley High Capacity Corridor Study (not mapped)
 - 13 State Hwy 45 reroute (in Nampa)
 - 14 State Hwy 16
 - 15 Boise Downtown Circulator (not mapped)
 - 16 Valleyconnect medium term (capital/operating, not mapped)
 - 17 State Hwy 55 (State Hwy 44 to Ada/Boise County line)
 - 18 Middleton Road
 - 19 Overland Road (multi-modal corridor plan)
 - 20 North/South Kuna Corridor (railroad crossing, pending location preference)
 - 21 Cherry Lane
 - 22 Amity Road (as a corridor with Lake Hazel)
 - 22 Lake Hazel (as a corridor with Amity Road)
 - 23 State Hwy 55/Midland Road Bottleneck
 - 24 State Hwy 45
 - 25 Victory Road (in eastern Canyon County)
 - 26 US Hwy 20/26 (Caldwell to Parma)
 - 27 Three Cities River Crossing
 - 28 Star/Robinson Road
 - 29 CIM 2040 transit, long term (not mapped)
 - 30 Greenhurst Road
 - 31 Happy Valley Road
 - 32 Bowmont Road to Kuna Mora Road (new connection)
 - 32 Beacon Light/Purple Sage (new connection - preserving land for a future project)

- ### Legend
- Downtown
 - Mixed Use
 - Employment Center
 - Transit Oriented Development
 - Small Town
 - Future Neighborhood
 - Existing Neighborhood
 - Prime Farmland
 - Foothills
 - Rural
 - Regional Parks
 - Regional Pathway
 - State Highways
 - High Capacity Transit
 - Unique Areas
 - Large Unique Areas
 - Hospital
 - Airport
 - University
 - Prison

- Existing Corridor
- New Corridor
- Corridor Preservation



Features available as descriptions only:
 Regional Park and Ride (near term)
 Regional Park and Ride (short term)
 Valley Connect near-term
 Valley Connect medium term
 CIM 2040 transit, long term

1. Interstate 84 (Centennial Way Interchange to Franklin Boulevard Interchange)	12. Treasure Valley High Capacity Corridor (study to determine locally preferred option)	23. State Highway 55/Midland Boulevard Bottleneck (City of Nampa)
2. State Highway 44/State Street High Capacity Corridor	13. State Highway 45 reroute (City of Nampa – Bowmont Road to Interstate 84)	24. State Highway 45 (Greenhurst Road to Bowmont Road)
3. US Highway 20/26 (Chinden Boulevard) (Middleton Road to Locust Grove Road)	14. State Highway 16/McDermott Road (Kuna-Mora Road to Ada/Gem County Line)	25. Victory Road (Happy Valley Road to McDermott Road)
4. State Highway 55 (Snake River to the City of Nampa)	15. Boise Downtown Circulator	26. US Highway 20/26 (City of Caldwell to City of Parma)
5. Regional park and ride lots (near-term improvements)	16. valleyconnect medium-term (capital/operating)	27. Three Cities River Crossing (preserving land for a future project – bridge over the Boise River east of City of Eagle)
6. Linder Road (includes river crossing and new overpass – Lake Hazel Road to State Highway 44)	17. State Highway 55 (Beacon Light Road to Ada/Boise County Line)	28. Star/Robinson Road (Greenhurst Road to Ustick Road)
7. Franklin Road (bottleneck between Star Road and McDermott Road)	18. Middleton Road (State Highway 55 in City of Nampa to Main Street in City of Middleton)	29. CIM 2040 transit, long-term (capital/operating)
8. Caldwell/Nampa Boulevard (Linden Street to Orchard Avenue)	19. Overland Road (multimodal corridor plan)	30. Greenhurst Road (Middleton Road to McDermott Road /Happy Valley Road)
9. Ustick Road (Montana Avenue to McDermott Road)	20. North/South Kuna Corridor (railroad crossing in the City of Kuna)	31. Happy Valley Road (Greenhurst Road to Stamm Lane)
10. Regional park and ride lots (medium-term improvements)	21. Cherry Lane (Middleton Road to Black Cat Road)	32. Bowmont Road to Kuna-Mora Road (new connection)
11. valleyconnect near-term (capital/operating)	22. Lake Hazel Road/Amity Road (Lake Hazel, McDermott to Linder Road; Amity Road, Southside Boulevard to Black Cat Road)	33. Beacon Light/Purple Sage (new connection – preserving land for a future project)