



The Community Planning Association (COMPASS) is actively implementing [Communities in Motion 2040](#) (CIM 2040), the regional long-range transportation plan for Ada and Canyon Counties, adopted in July 2014. We are also working on updating the plan.

The next update of *Communities in Motion* will maintain the horizon year of 2040, and will be called [Communities in Motion 2040 2.0](#) (CIM 2040 2.0). The update builds on the main tenets of CIM 2040 - namely the [CIM 2040 Vision](#), [goals](#), and [performance measures](#). CIM 2040 2.0 will focus on four transportation system components and how they work together to form a complete, efficient transportation system for the Treasure Valley:

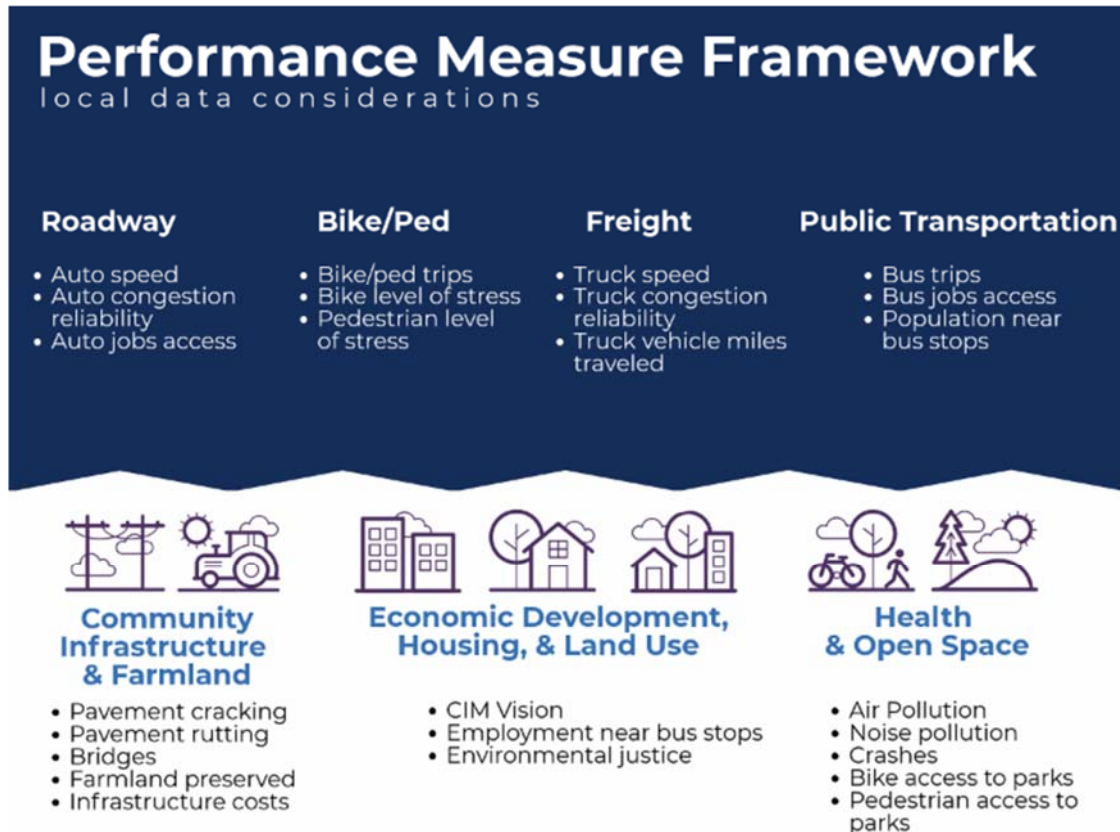
- [Bicycle/Pedestrian](#)
- [Freight](#)
- [Public Transportation](#)
- [Roadways](#)

Over the past three years, COMPASS focused on each of the components individually - gathering data, creating snapshots of what each looks like today, identifying needs for each, and developing a vision of what each could look like in the future. We are now layering that information to examine the transportation system as a whole, including maintenance of the system, and identifying funding priorities for CIM 2040 2.0.

We will continue to send quarterly email updates to help you stay abreast of both the behind-the-scene planning process and opportunities for you to be involved. Each email will provide a summary of what has happened since the last email update and a preview of what is planned before the next scheduled email update. Past CIM 2040 2.0 email updates like this one are available on the [CIM 2040 2.0 webpage](#).

# What's new since January?

## A progress report on *Communities in Motion*



### Planning Process:

- Provided the results of a preliminary technical analysis of unfunded projects to the Regional Transportation Advisory Committee
- Continued writing technical documentation for the CIM 2040 2.0 plan update, including travel and tourism, public transportation, active transportation, technology, project prioritization, and safety, security, and resilience
- Continued to develop an online, interactive web document for the CIM 2040 2.0 plan update
- Worked with the COMPASS Public Transportation Workgroup on refining the 2040 Treasure Valley Public Transportation System, including an east-west high capacity service and a "trunk and feeder" public transportation system, and estimated the cost of it using commuter rail as an example
- Discussed updated environmental suitability analysis results with the COMPASS Environmental Review Workgroup
- Reviewed freight needs and solutions with the COMPASS Freight Advisory Workgroup

## **Implementation:**

- [Amended CIM 2040](#) to add projects to add safety and capacity improvements on I-84 from Nampa to Caldwell, begin preliminary engineering work to extend State Highway 16 from US 20/26 (Chinden Boulevard) to I-84, and design a transit oriented development in the City of Nampa
- Reprioritized State Highway 16 to #5 from #14 on the CIM 2040 unfunded priority project list
- Completed 25 [development checklists](#) to help bridge local and regional planning efforts

## **Public Involvement and Outreach:**

- Solicited public comment on a proposed amendment to CIM 2040 (see Implementation, above)

# What's next for CIM?

## A close look at the next three months



*The population of Ada and Canyon Counties will surpass one million by the year 2040.*

**HOW WILL WE PREPARE TO MEET THE DEMANDS THAT COME WITH THIS GROWTH?**

### Planning Process:

- Continue writing technical documentation and designing an online, interactive web document for the CIM 2040 2.0 plan update
- Approve funded projects and priorities for unfunded corridors and projects in CIM 2040 2.0
- Complete demographic reconciliation to align proposed development and forecasted growth

### Implementation:

- Obtain portable bicycle and pedestrian count data for member agencies upon request
- Continue to provide development checklists to help local agencies implement CIM