



COMMUNITIES *in* MOTION 2040 | 2.0

The Community Planning Association (COMPASS) is actively implementing [Communities in Motion 2040](#) (CIM 2040), the regional long-range transportation plan for Ada and Canyon Counties, adopted in July 2014. We are also working on updating the plan.

The next update of *Communities in Motion* will maintain the horizon year of 2040, and will be called [Communities in Motion 2040 2.0](#) (CIM 2040 2.0). The update builds on the main tenets of CIM 2040 - namely the [CIM 2040 Vision](#), [goals](#), and [performance measures and targets](#). CIM 2040 2.0 will focus on four transportation system components and how they work together to form a complete, efficient transportation system for the Treasure Valley:

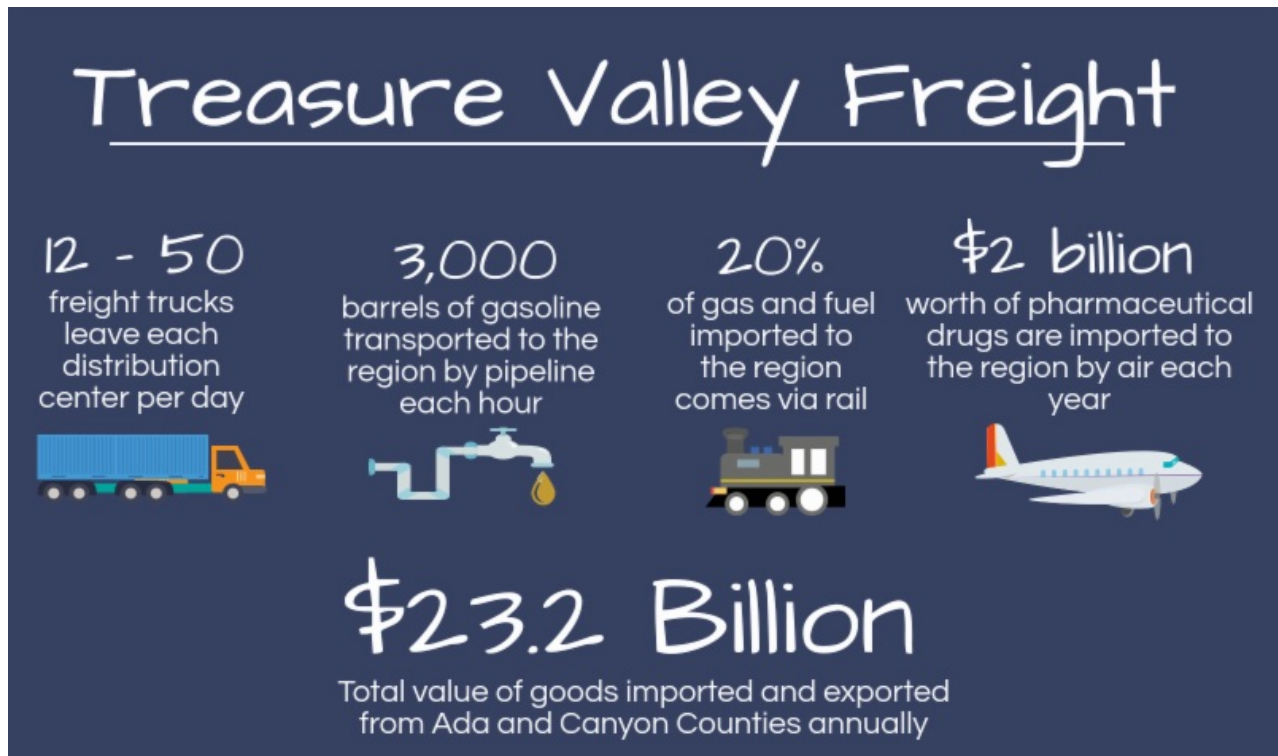
- [Bicycle/Pedestrian](#)
- [Freight](#)
- [Public Transportation](#)
- [Roadways](#)

Throughout 2015 and 2016, COMPASS focused on each of the components individually - gathering data, creating snapshots of what each looks like today, identifying needs for each, and developing a vision of what each could look like in the future. We are now layering that information to examine the transportation system as a whole, including maintenance of the system, and identifying funding priorities for CIM 2040 2.0.

We will continue to send quarterly email updates to help you stay abreast of both the behind-the-scene planning process and opportunities for you to be involved. Each email will provide a summary of what has happened since the last email update and a preview of what is planned before the next scheduled email update. Past CIM 2040 2.0 email updates like this one are available on the [CIM 2040 2.0 webpage](#).

What's new since July?

A progress report on *Communities in Motion*



Planning Process:

- Worked with the COMPASS Freight Advisory Workgroup to review a regional freight study, including freight activity, key corridors, performance measures, and more.
- Began working with cities, counties, and highway districts to identify deferred maintenance needs.
- Continued comparing recent growth in the Treasure Valley with CIM 2040 Vision forecasts.
- Worked with the COMPASS Public Transportation Workgroup to discuss strategies for the CIM 2040 2.0 plan update.
- Continued writing technical documentation and designing an online format for the CIM 2040 2.0 plan update.

Implementation:

- Installed 15 portable and 2 permanent bicycle and pedestrian counters in the Ada and Canyon Counties.
- Completed 29 development review checklists to help bridge local and regional planning efforts.
- Revised the development review checklist to provide more useful information in a user-friendly format.
- Approved five CIM Implementation Grants for a total of \$50,000; grants will be awarded to the Cities of Kuna, Parma, and Wilder.

Public Involvement and Outreach:

- Presented the new [Bike Walk COMPASS](#) and CIM 2040 2.0 bicycle and pedestrian plans to the Meridian Rotary Club.
- Presented CIM 2040 2.0 to the Urban Land Institute Young Leaders Group.
- Held public comment periods (July 17 - August 15, 2017 and August 27 - September 11, 2017) on proposed amendments to CIM 2040; 29 CIM-specific comments were received.
- Hosted an open house and a Facebook Live question and answer session to provide information and solicit public comment on proposed CIM amendments.
- Continued sharing CIM performance measure data through social media in an effort to make the most current data more accessible. To learn more, follow COMPASS on [Facebook](#), [Twitter](#), and [Instagram](#).

What's next for CIM?

A close look at the next three months



Planning Process:

- Work with the Regional Transportation Advisory Committee and

member agencies to update the needed transportation corridors and projects in CIM 2040 2.0 and prioritize unfunded improvements.

- Continue development of an online application process for all funding sources, including CIM Implementation Grants.
- Continue working with bicycle, pedestrian, and public transportation network stakeholders to gain input into the CIM 2040 2.0 transportation network.
- Continue writing technical documentation and designing an online format for the CIM 2040 2.0 plan update.

Implementation:

- Continue to provide development review checklists to help local agencies implement CIM.
- Release a call for projects for all funding sources, including CIM Implementation Grants.



Connect with COMPASS!

Get news, updates, and facts about the Treasure Valley's transportation system in real time



Visit our website

Subscribe to our blog