

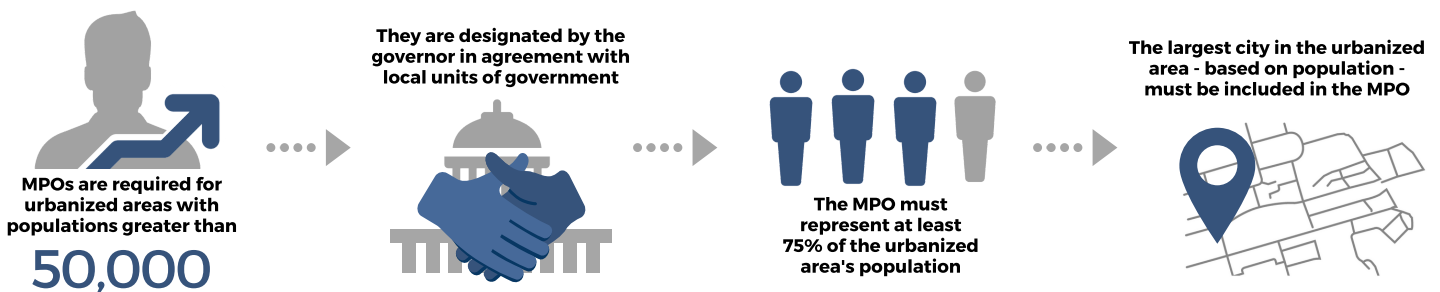
# COMPASS FY2021 Budget

## Who is COMPASS?

The Community Planning Association of Southwest Idaho (COMPASS) is the forum for regional collaboration in southwest Idaho that helps maintain a healthy and economically vibrant region.

COMPASS conducts regional planning, facilitates coordination and cooperation, serves as a source of information and expertise on issues affecting southwest Idaho, and assists member agencies in accessing funding to accomplish local and regional goals.

COMPASS also serves as the metropolitan planning organization (MPO) for Ada and Canyon Counties. To access federal funding for transportation projects, an MPO must be designated for urbanized areas with populations greater than 50,000. The designation is made by an agreement between the governor and the local units of government that together represent at least 75% of the population in the urbanized area. The largest city based on population in the urbanized area must be included in the MPO.



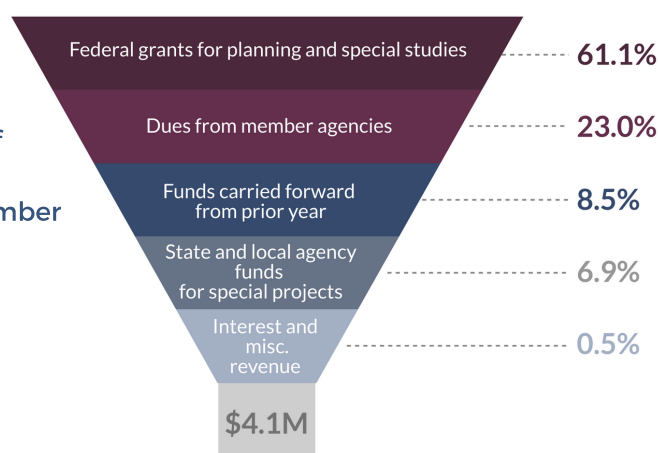
COMPASS IS its members. The COMPASS Board of Directors – primarily local elected officials representing the local units of government that comprise COMPASS – make the policy and financial decisions that guide COMPASS' activities.

## COMPASS' FY2021 Budget

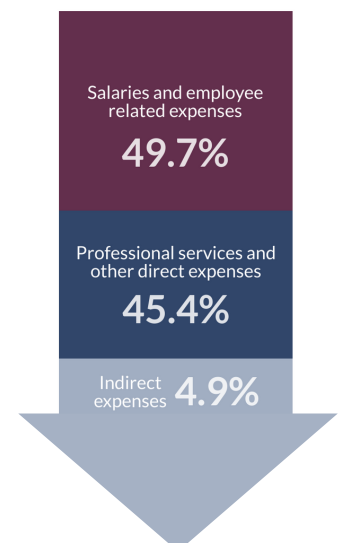
COMPASS' total FY2021 budget is about \$4.1 million. The majority of COMPASS' funding comes from federal grants and dues from member agencies.

Learn more about COMPASS at: [www.compassidaho.org](http://www.compassidaho.org)

### FUNDING



### EXPENSES

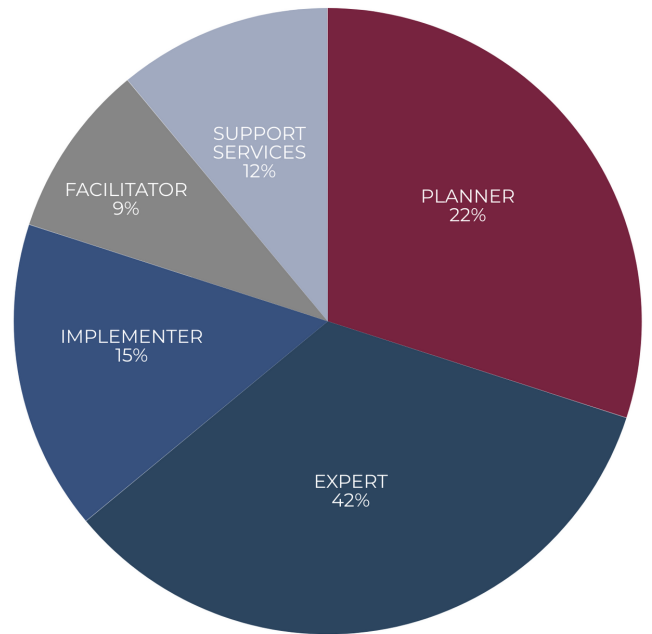


# Putting the Budget to Work





To best serve the region, including the responsibilities as MPO, COMPASS fulfills four roles: planner, expert, implementer, and facilitator.

COMPASS' work in these four areas supports the current and future high quality of life in Ada and Canyon Counties by planning for the region's long-term transportation needs, collecting and analyzing regional data in support of local and regional planning activities, allocating and overseeing federal transportation dollars, and bringing stakeholders together to facilitate regional collaboration and decision-making.

In addition, like any organization, a portion of the COMPASS' budget is dedicated to support services – administrative work needed for the operation of the agency.



**COMPASS allocates its budget – staff time and direct dollars – to align with its regional roles.**

 <p><b>PLANNER</b></p> <p>Develops executable, integrated plans</p> <hr/> <p><i>Primary Product:</i></p> <p>Regional Long-Range Transportation Plan</p> <hr/> <p><i>Benefits:</i></p> <p>Prepares region for future transportation needs and fulfills requirements for use of federal transportation funds</p>	 <p><b>EXPERT</b></p> <p>Serves as a regional source of data and state-of-the-art expertise</p> <hr/> <p><i>Primary Products:</i></p> <p>Data and analyses including demographic estimates and forecasts, modeling, economic impacts, and more</p> <hr/> <p><i>Benefits:</i></p> <p>Provides quality data to support informed decisions</p>	 <p><b>IMPLEMENTER</b></p> <p>Secures and budgets financial resources to implement projects that meet regional goals</p> <hr/> <p><i>Primary Products:</i></p> <p>Budget of federally-funded transportation projects; grant writing assistance</p> <hr/> <p><i>Benefits:</i></p> <p>Brings additional funding to the region and ensures federal funds are used to meet identified transportation needs</p>	 <p><b>FACILITATOR</b></p> <p>Brings stakeholders together to facilitate coordination and cooperation</p> <hr/> <p><i>Primary Product:</i></p> <p>Informed, collaborative regional decisions</p> <hr/> <p><i>Benefits:</i></p> <p>Supports informed, collaborative regional decisions</p>
---	--	--	--