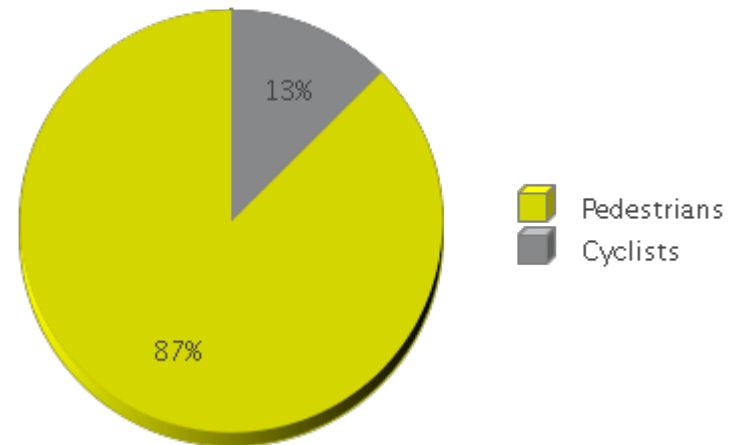


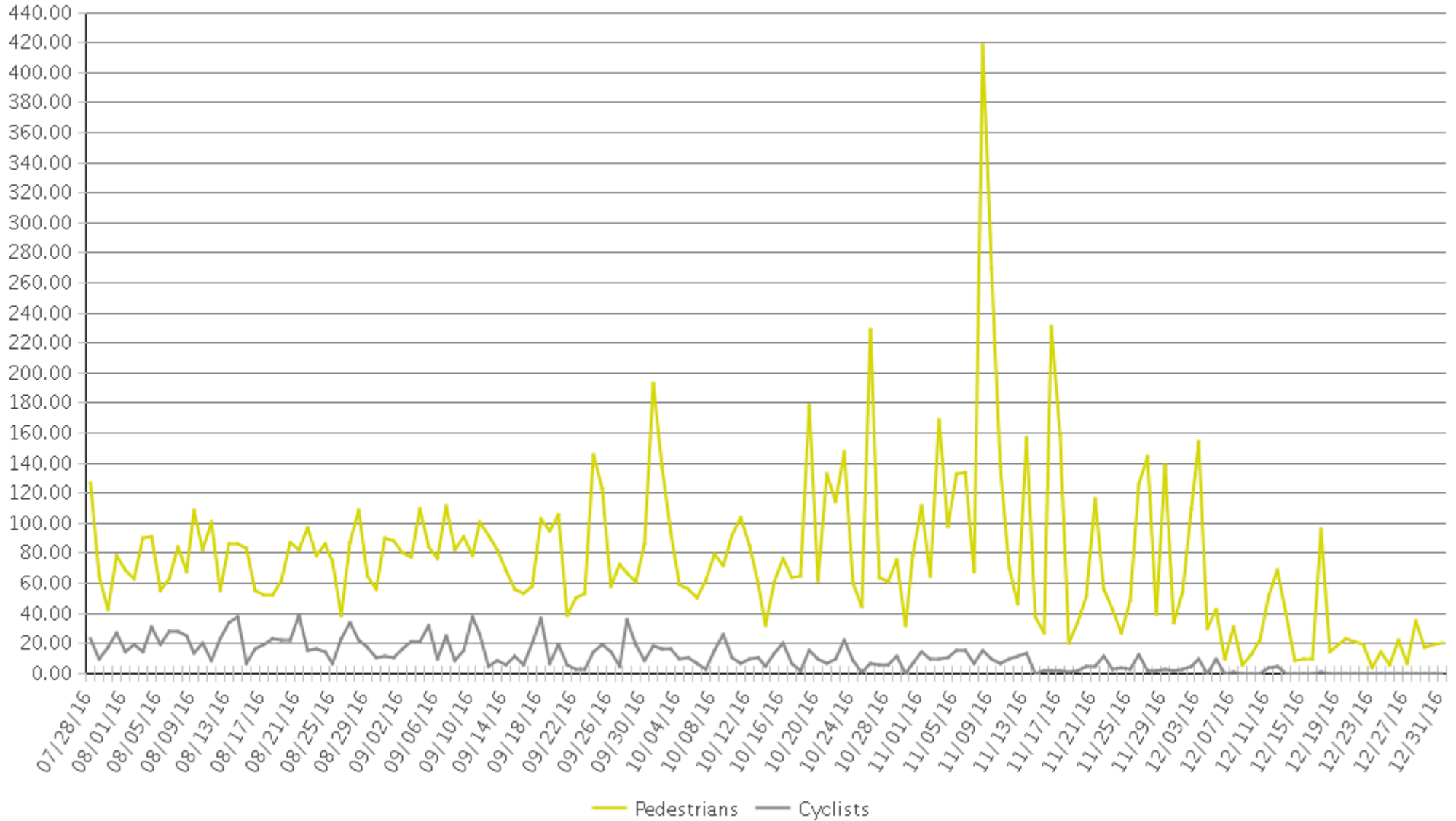


	Total Traffic for the Analyzed Period	Daily Average	Busiest Day of the Week	Busiest Month of the Year	Distribution %	
					In = North	Out = South
Pedestrians	12,032	77	Wednesday	November 16: 3,210	56%	44%
Cyclists	1,726	11	Sunday	August 16: 631	40%	60%

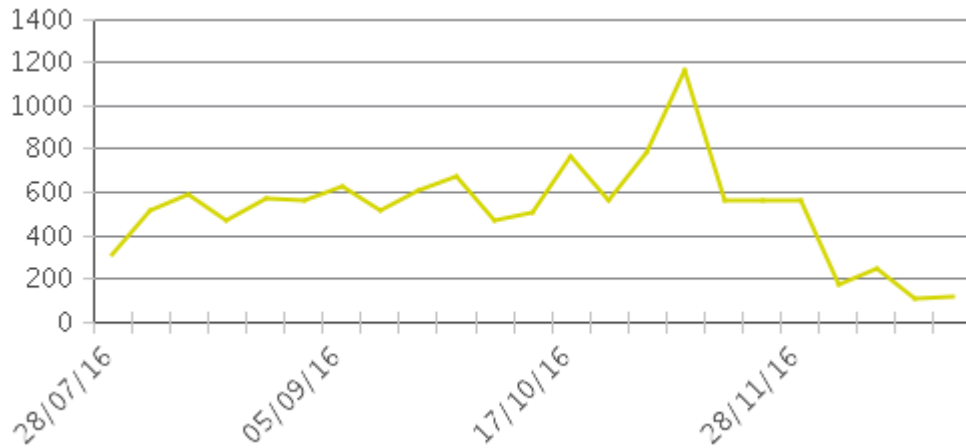




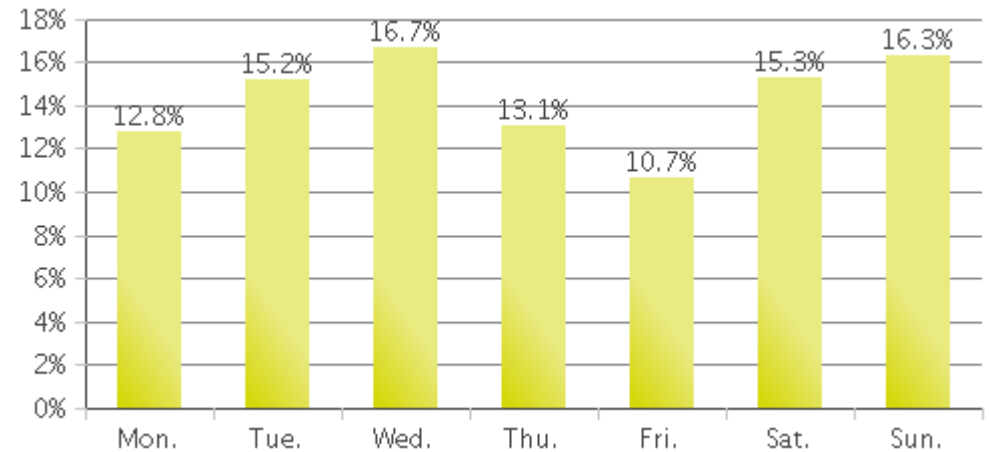
Caldwell – Boise River Greenbelt
Period Analyzed: Thursday, July 28, 2016 to Saturday, December 31, 2016



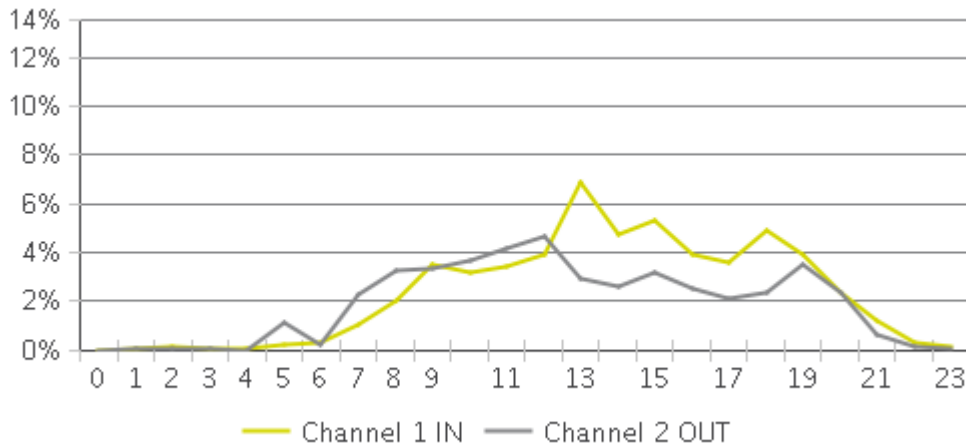
Weekly Traffic



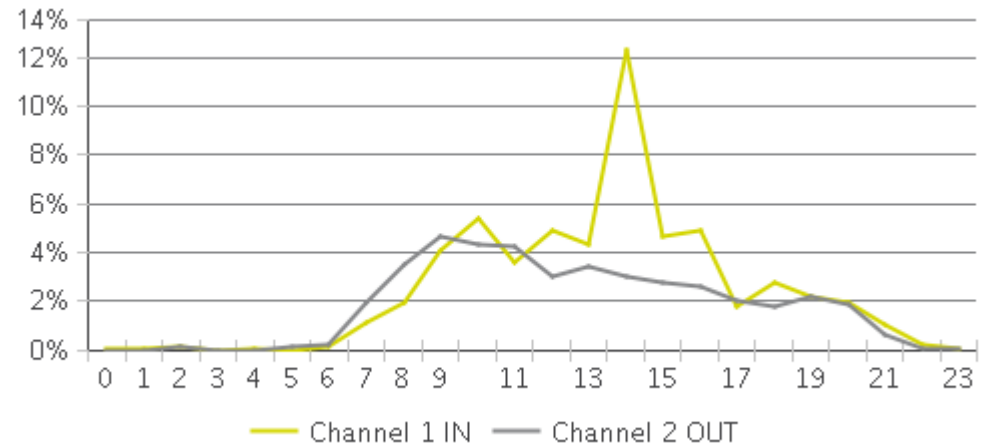
Weekly Profile



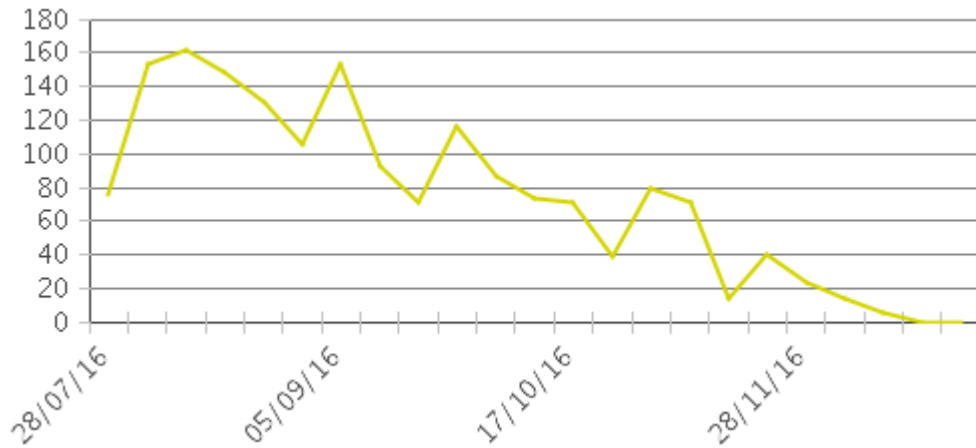
Hourly Profile during Weekdays



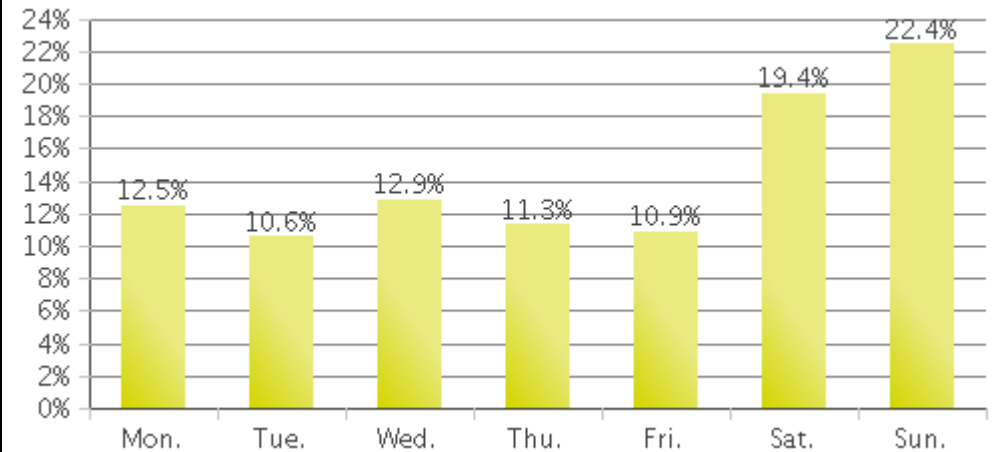
Hourly Profile during the Weekend



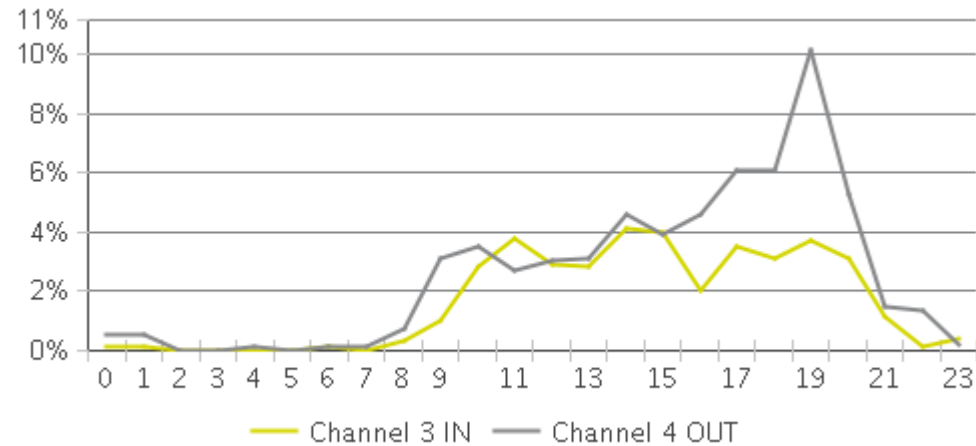
Weekly Traffic



Weekly Profile



Hourly Profile during Weekdays



Hourly Profile during the Weekend

