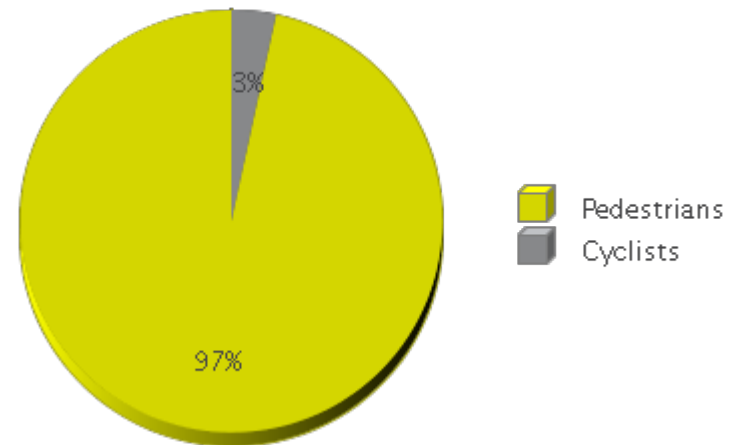
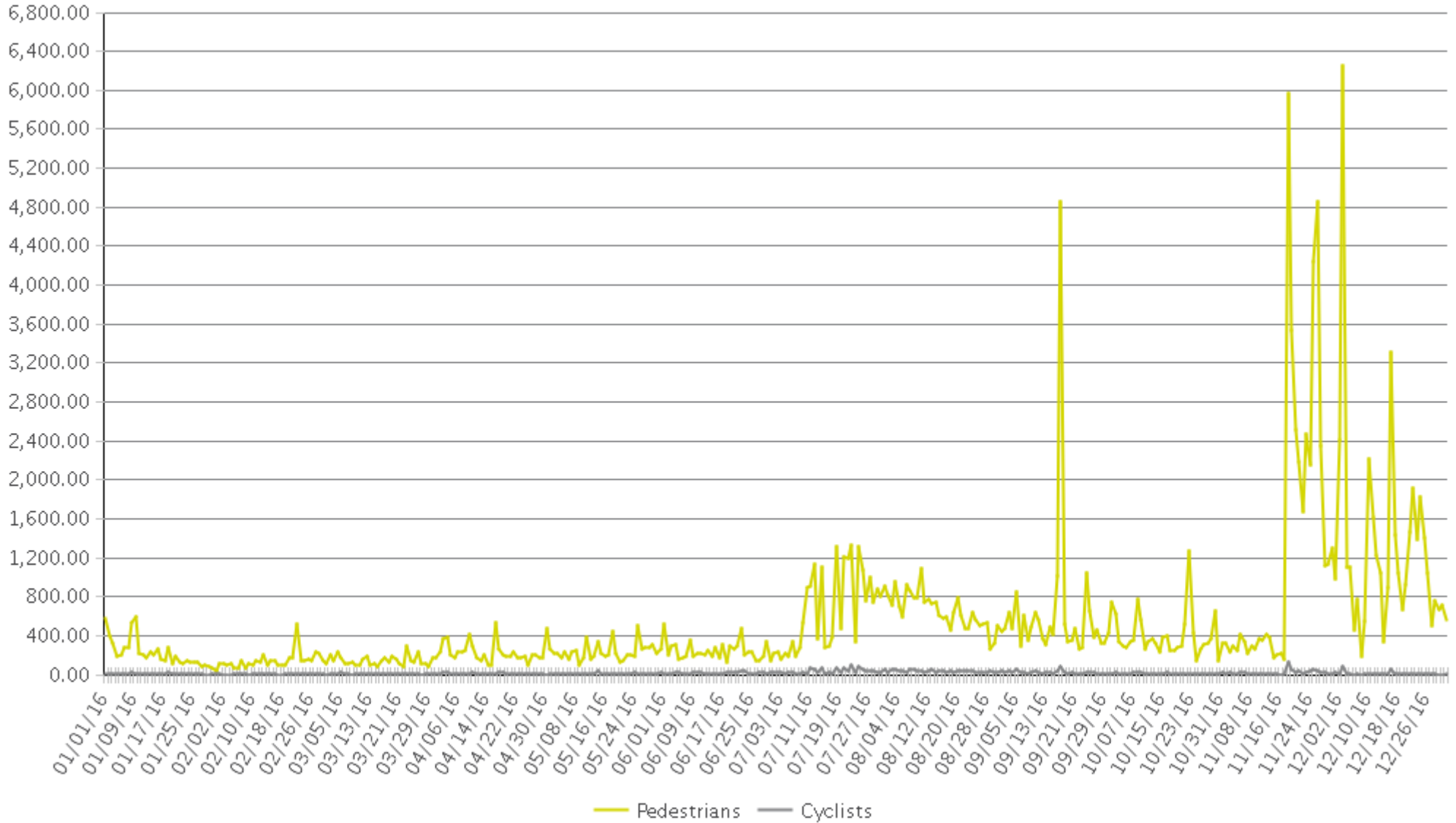


	Total Traffic for the Analyzed Period	Daily Average	Busiest Day of the Week	Busiest Month of the Year	Distribution %	
					In = North	Out = South
Pedestrians	191,993	525	Saturday	December 16: 40,858	55%	45%
Cyclists	6,754	18	Saturday	July 16: 1,151	60%	40%



Caldwell - Indian Creek Pathway

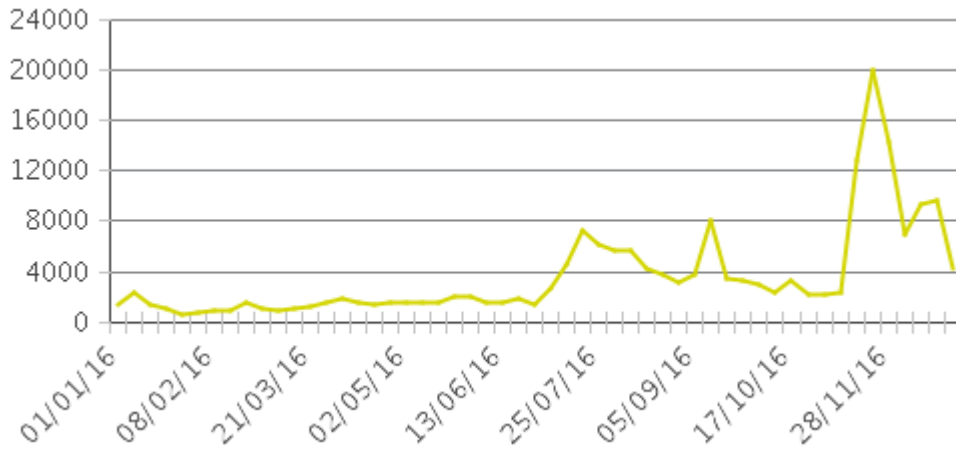
Period Analyzed: Friday, January 01, 2016 to Saturday, December 31, 2016



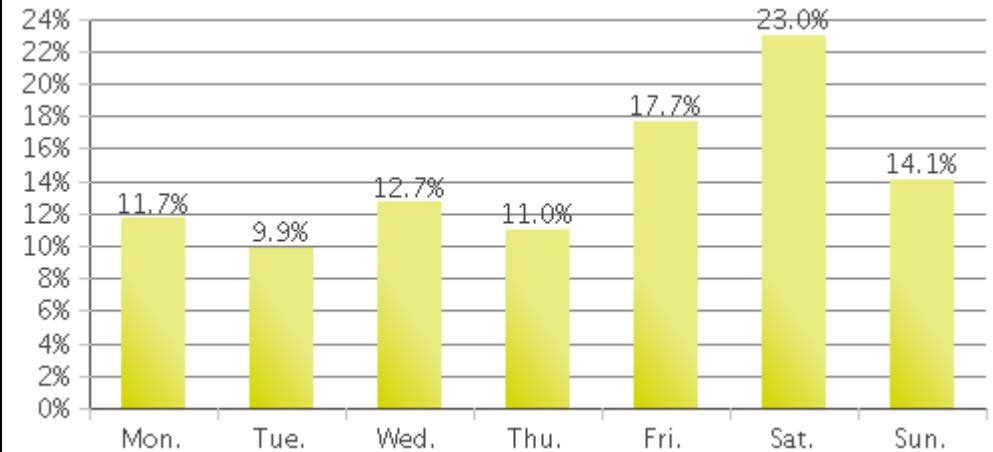
Caldwell - Indian Creek (Pedestrians)

Period Analyzed: Friday, January 01, 2016 to Saturday, December 31, 2016

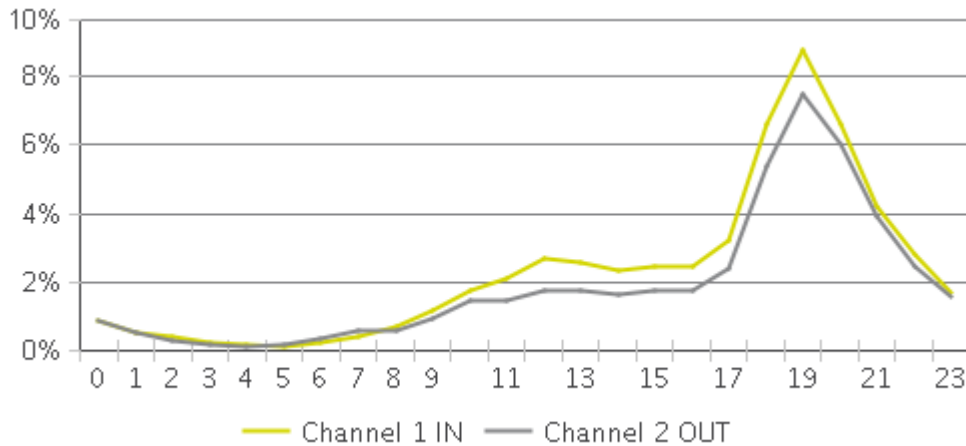
Weekly Traffic



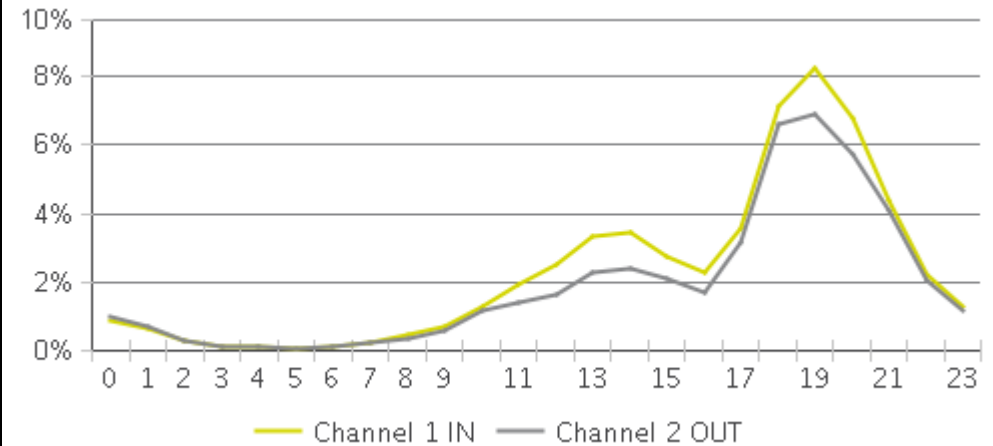
Weekly Profile



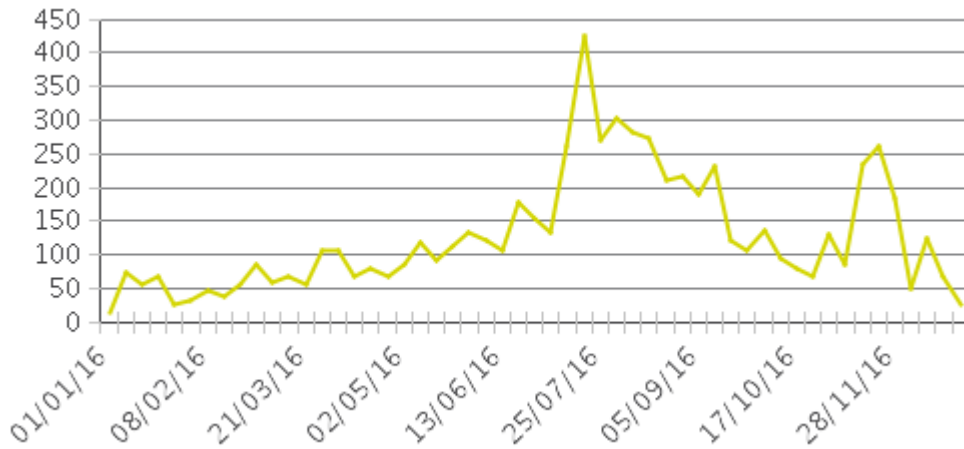
Hourly Profile during Weekdays



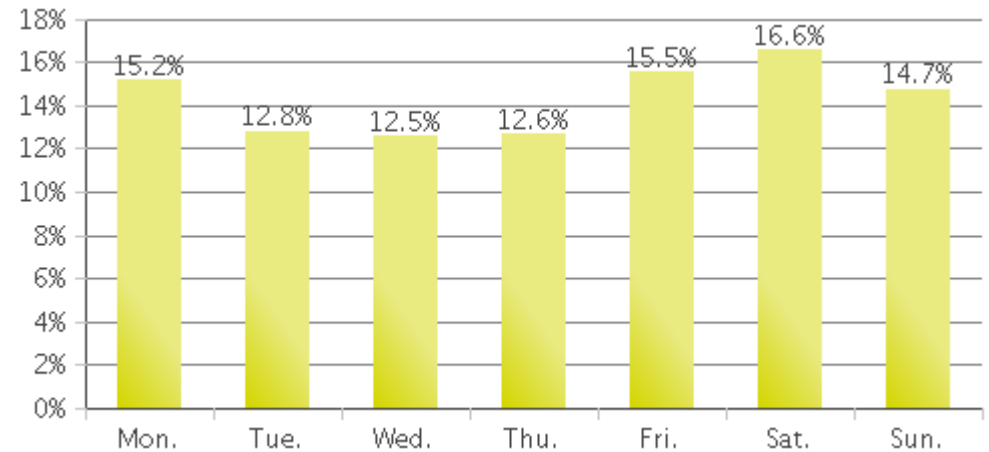
Hourly Profile during the Weekend



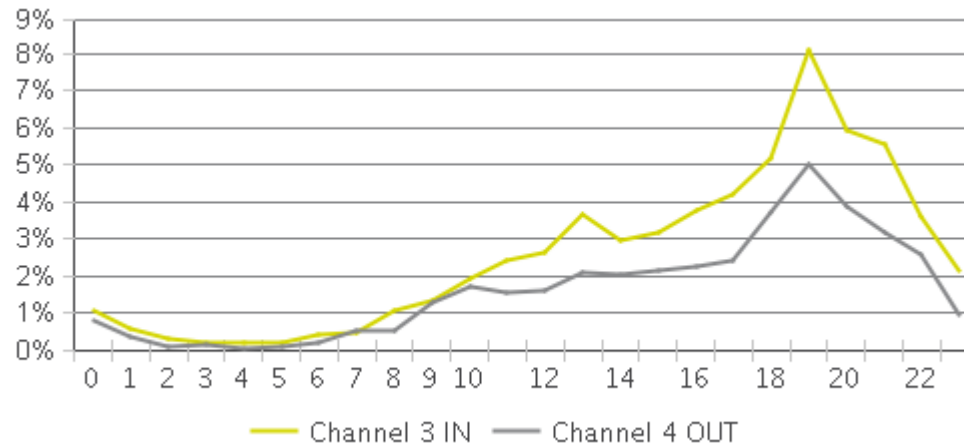
Weekly Traffic



Weekly Profile



Hourly Profile during Weekdays



Hourly Profile during the Weekend

