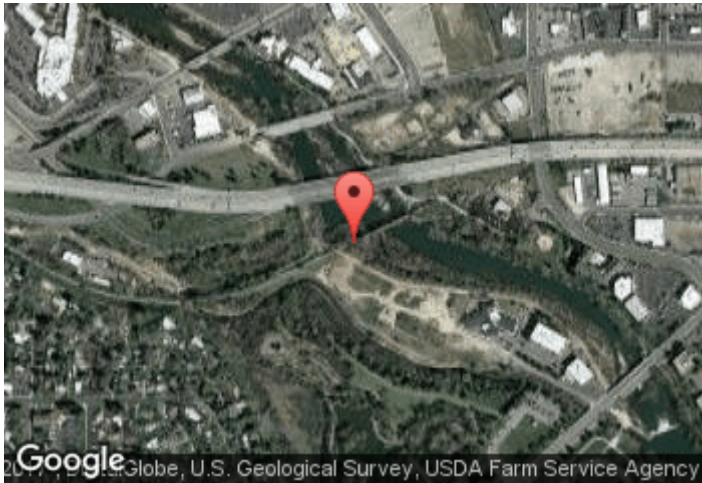
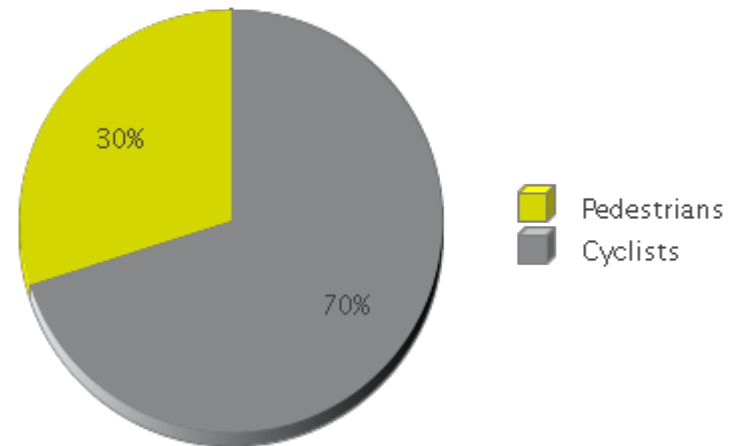


Boise River Greenbelt - Trestle Bridge

Period Analyzed: Friday, January 01, 2016 to Saturday, December 31, 2016

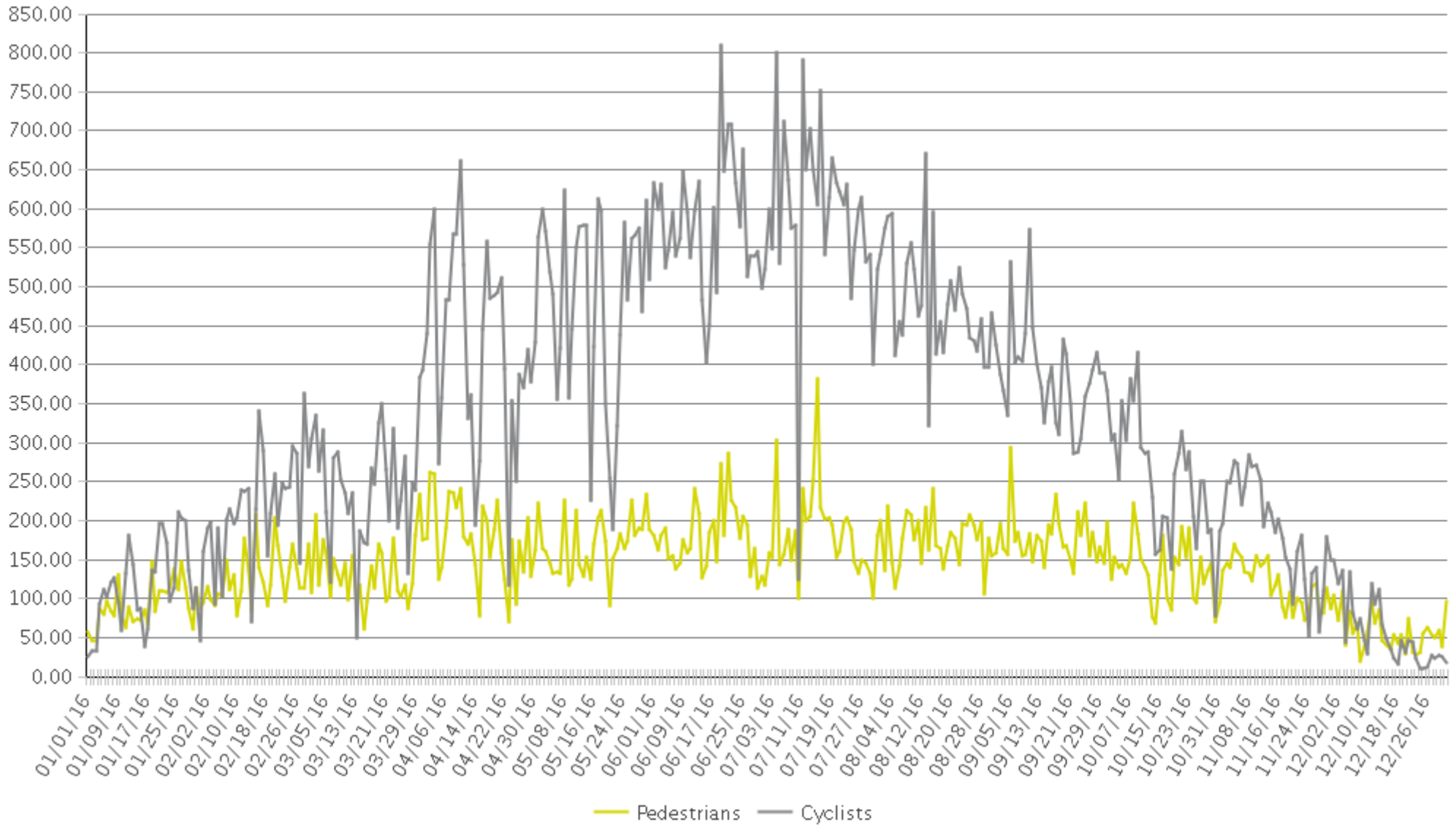


	Total Traffic for the Analyzed Period	Daily Average	Busiest Day of the Week	Busiest Month of the Year	Distribution %	
					In = West	Out = East
Pedestrians	52,543	144	Saturday	July 16: 5,654	52%	48%
Cyclists	123,136	336	Wednesday	July 16: 18,342	53%	47%



Boise River Greenbelt - Trestle Bridge

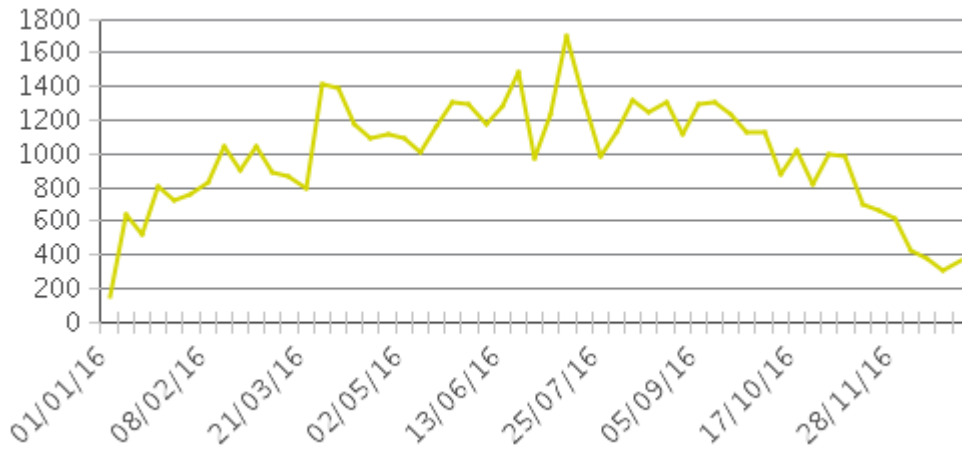
Period Analyzed: Friday, January 01, 2016 to Saturday, December 31, 2016



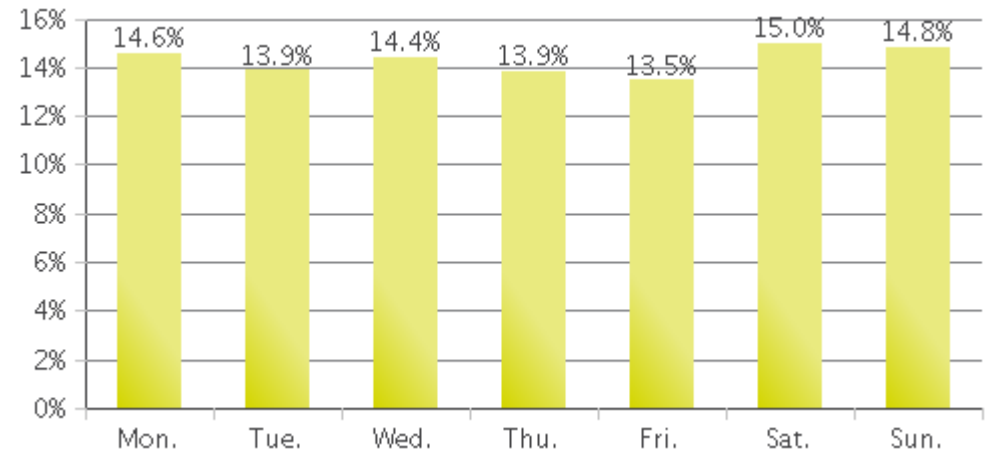
Boise - Trestle Bridge (Pedestrians)

Period Analyzed: Friday, January 01, 2016 to Saturday, December 31, 2016

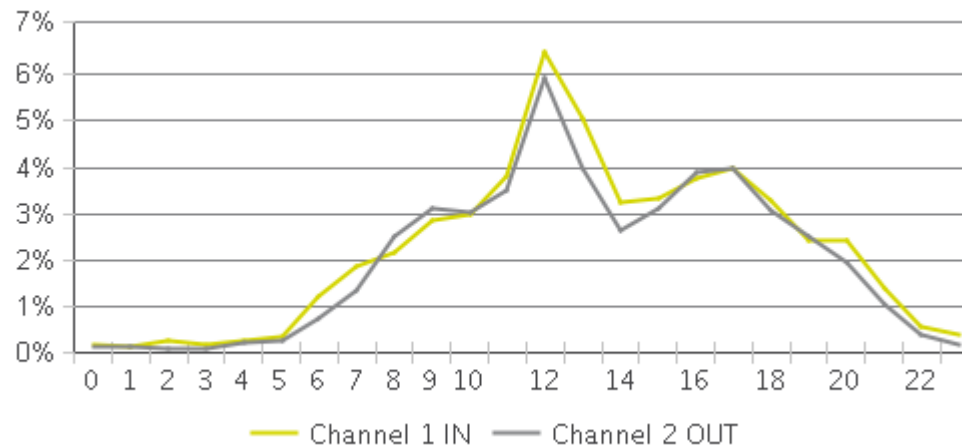
Weekly Traffic



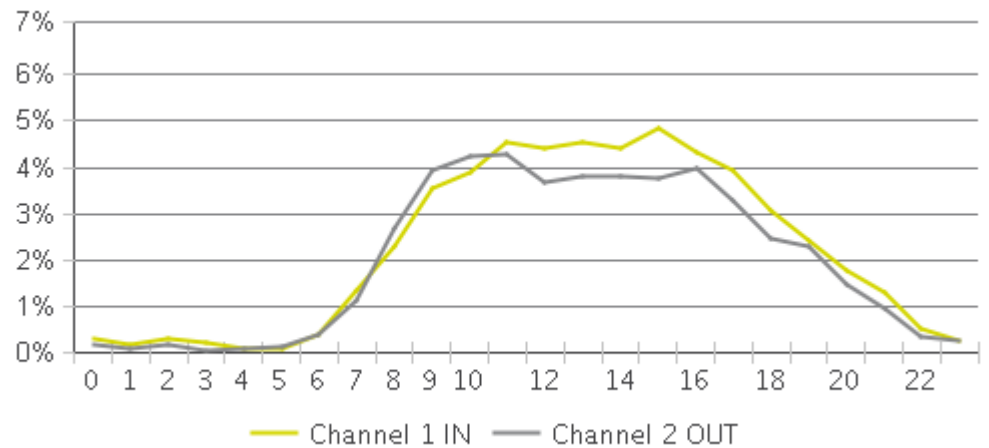
Weekly Profile



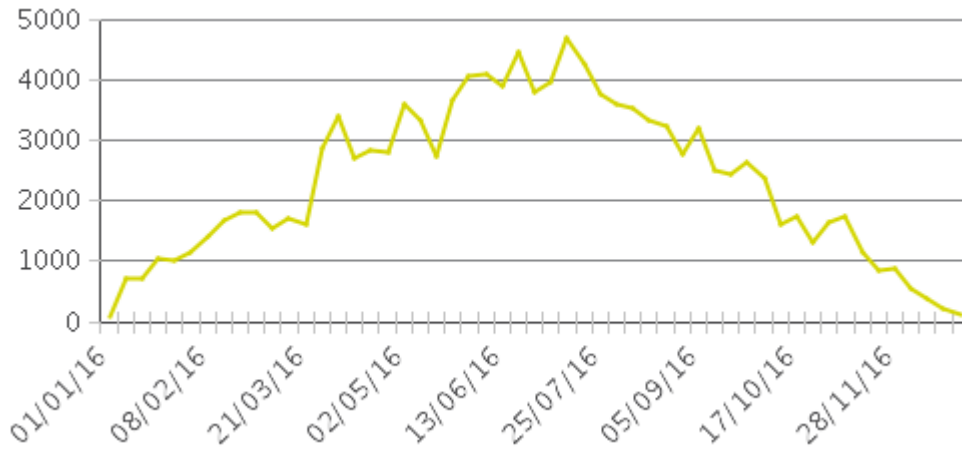
Hourly Profile during Weekdays



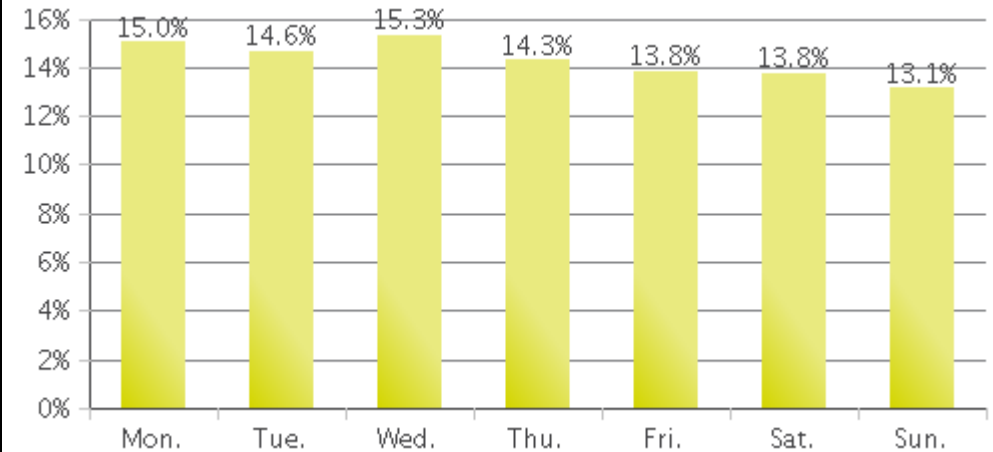
Hourly Profile during the Weekend



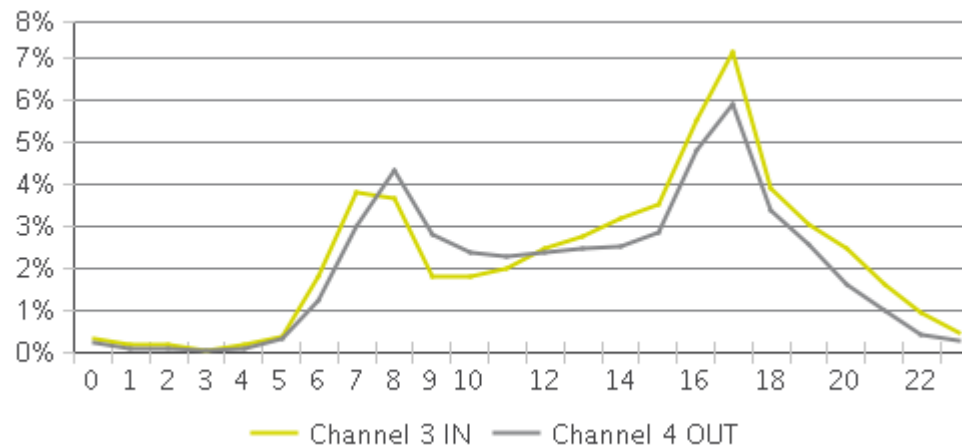
Weekly Traffic



Weekly Profile



Hourly Profile during Weekdays



Hourly Profile during the Weekend

