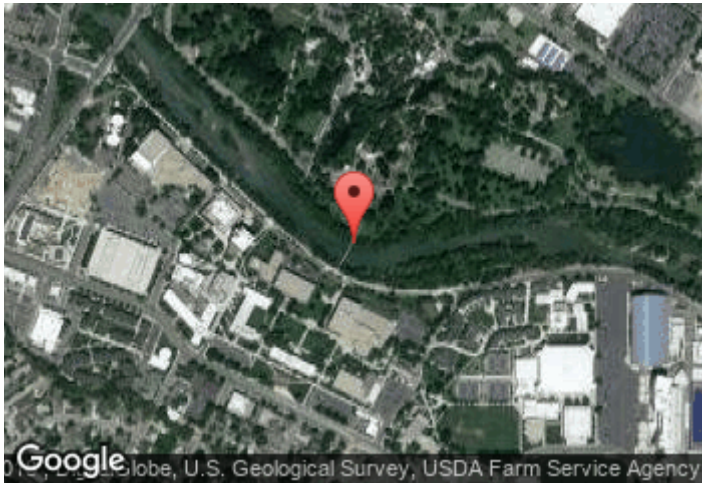


Boise River Greenbelt - Friendship Bridge

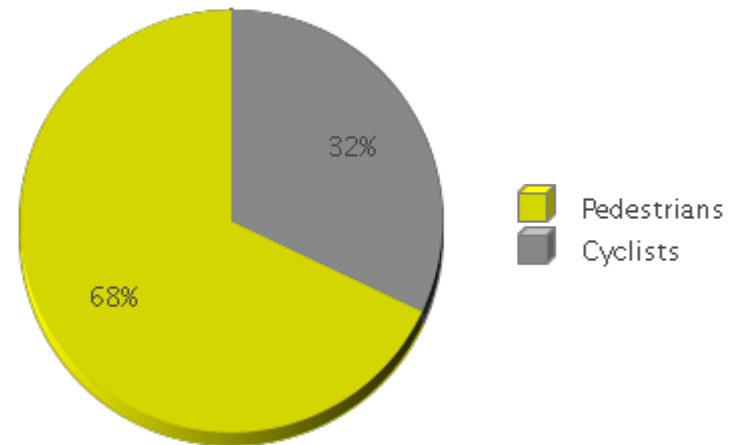
Period Analyzed: Sunday, January 01, 2017 to Sunday, December 31, 2017



	Total Traffic for the Analyzed Period	Daily Average	Busiest Day of the Week	Busiest Month of the Year	Distribution	
					In = South	Out = North
Pedestrians	466,449	1,289	Thursday	September 17: 60,869	76	24
Cyclists	219,853	607	Wednesday	August 17: 32,936	76	24

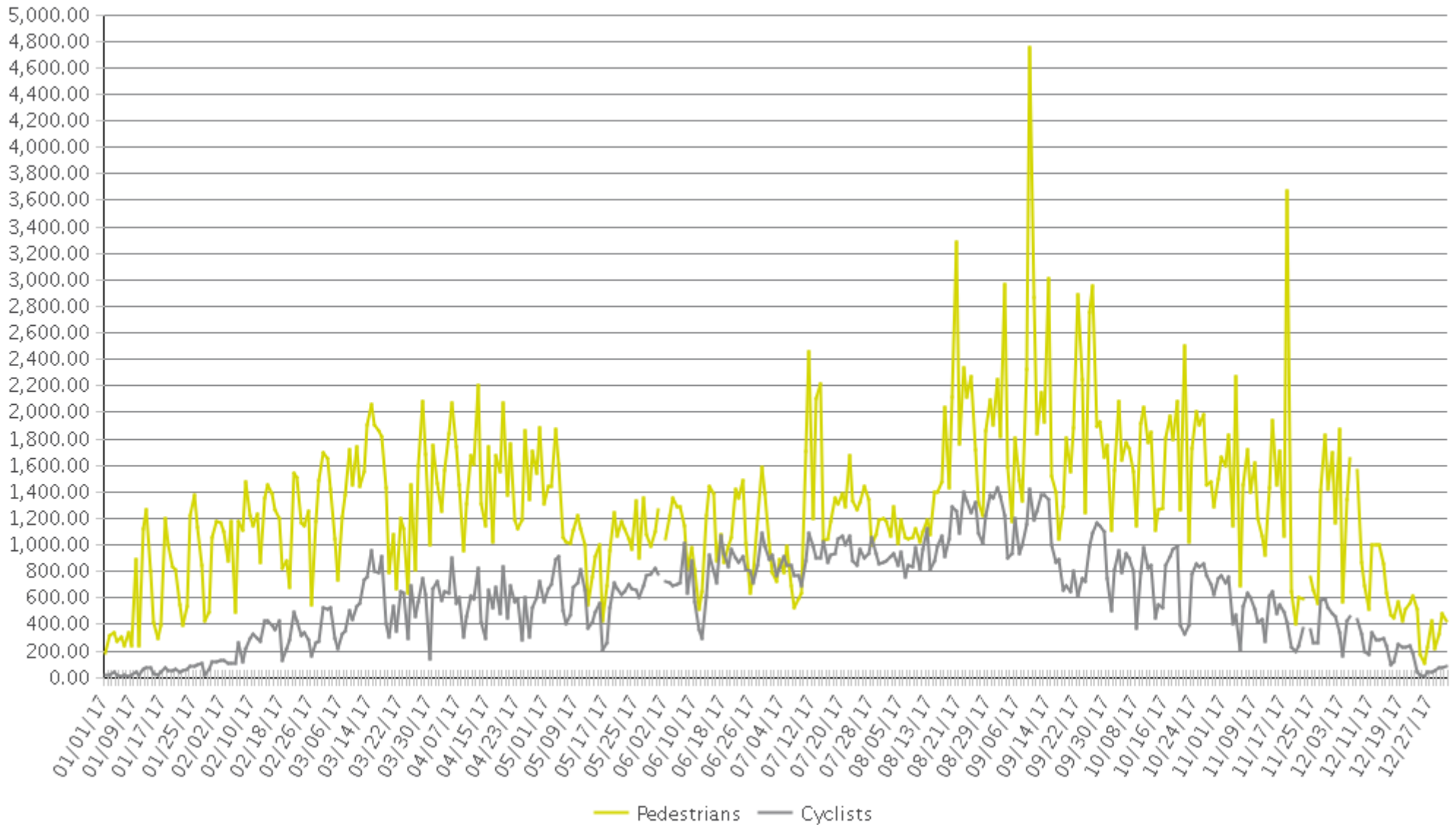
IN: In = South

OUT: Out = North



Boise River Greenbelt - Friendship Bridge

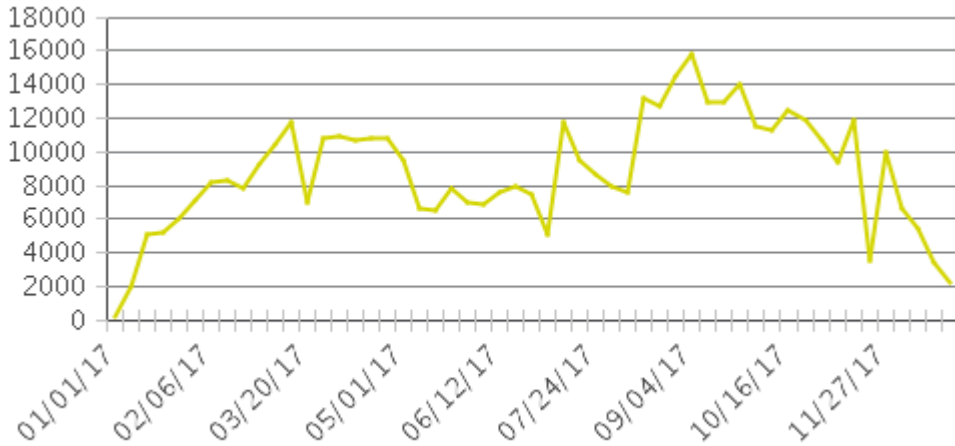
Period Analyzed: Sunday, January 01, 2017 to Sunday, December 31, 2017



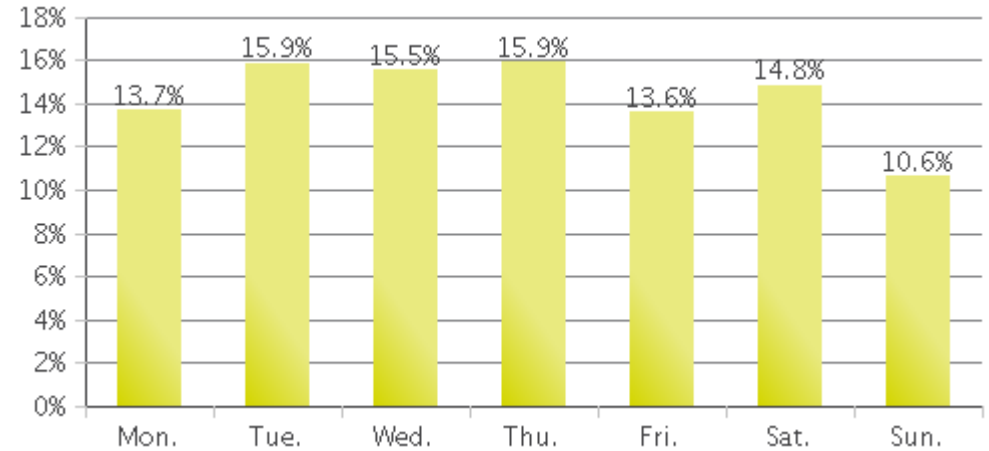
Boise - Friendship Bridge (Pedestrians)

Period Analyzed: Sunday, January 01, 2017 to Sunday, December 31, 2017

Weekly Traffic



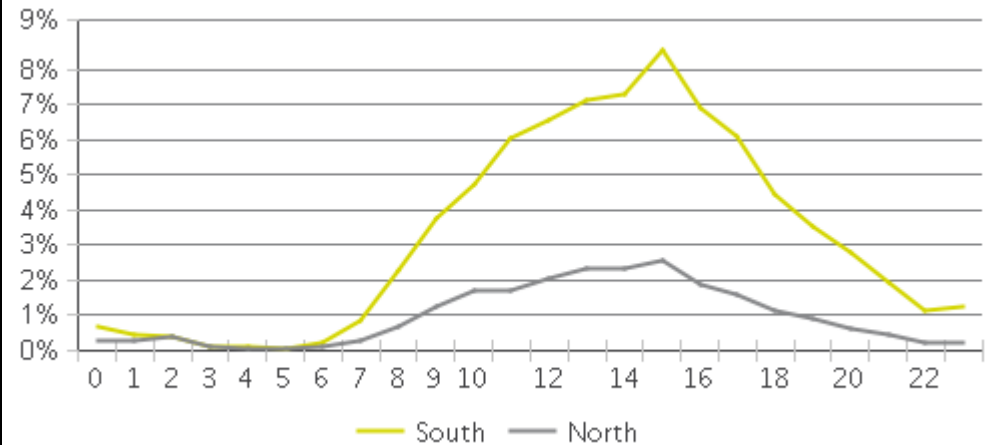
Weekly Profile



Hourly Profile during Weekdays



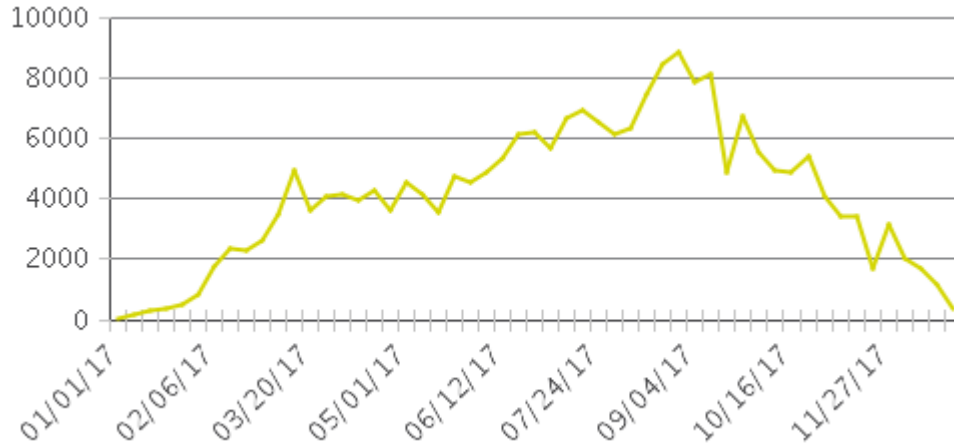
Hourly Profile during the Weekend



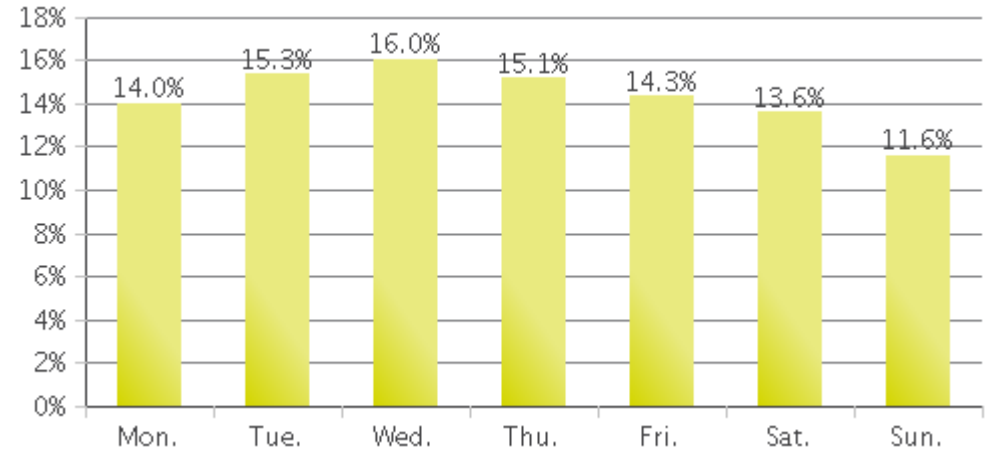
Boise - Friendship Bridge (Cyclists)

Period Analyzed: Sunday, January 01, 2017 to Sunday, December 31, 2017

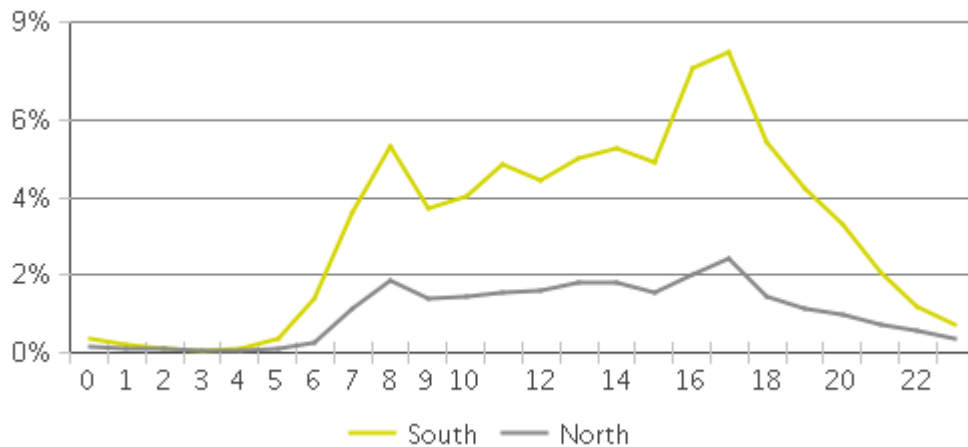
Weekly Traffic



Weekly Profile



Hourly Profile during Weekdays



Hourly Profile during the Weekend

