

Boise River Greenbelt - Trestle Bridge

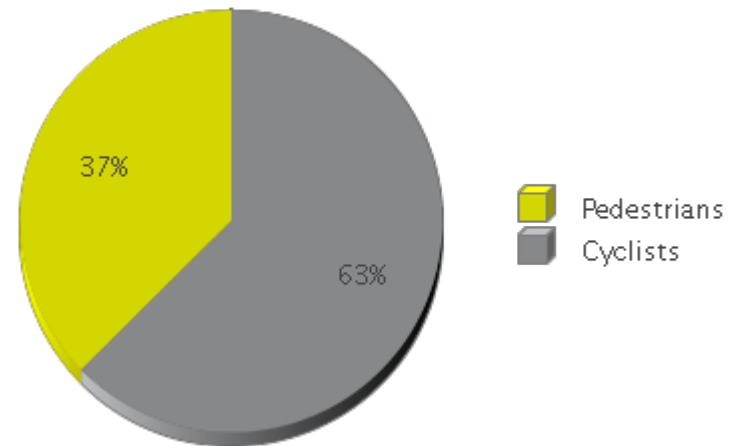
Period Analyzed: Sunday, January 01, 2017 to Sunday, December 31, 2017



	Total Traffic for the Analyzed Period	Daily Average	Busiest Day of the Week	Busiest Month of the Year	Distribution	
					In = West	Out = East
Pedestrians	52,288	143	Saturday	August 17: 5,745	53	47
Cyclists	87,425	240	Wednesday	July 17: 13,838	53	47

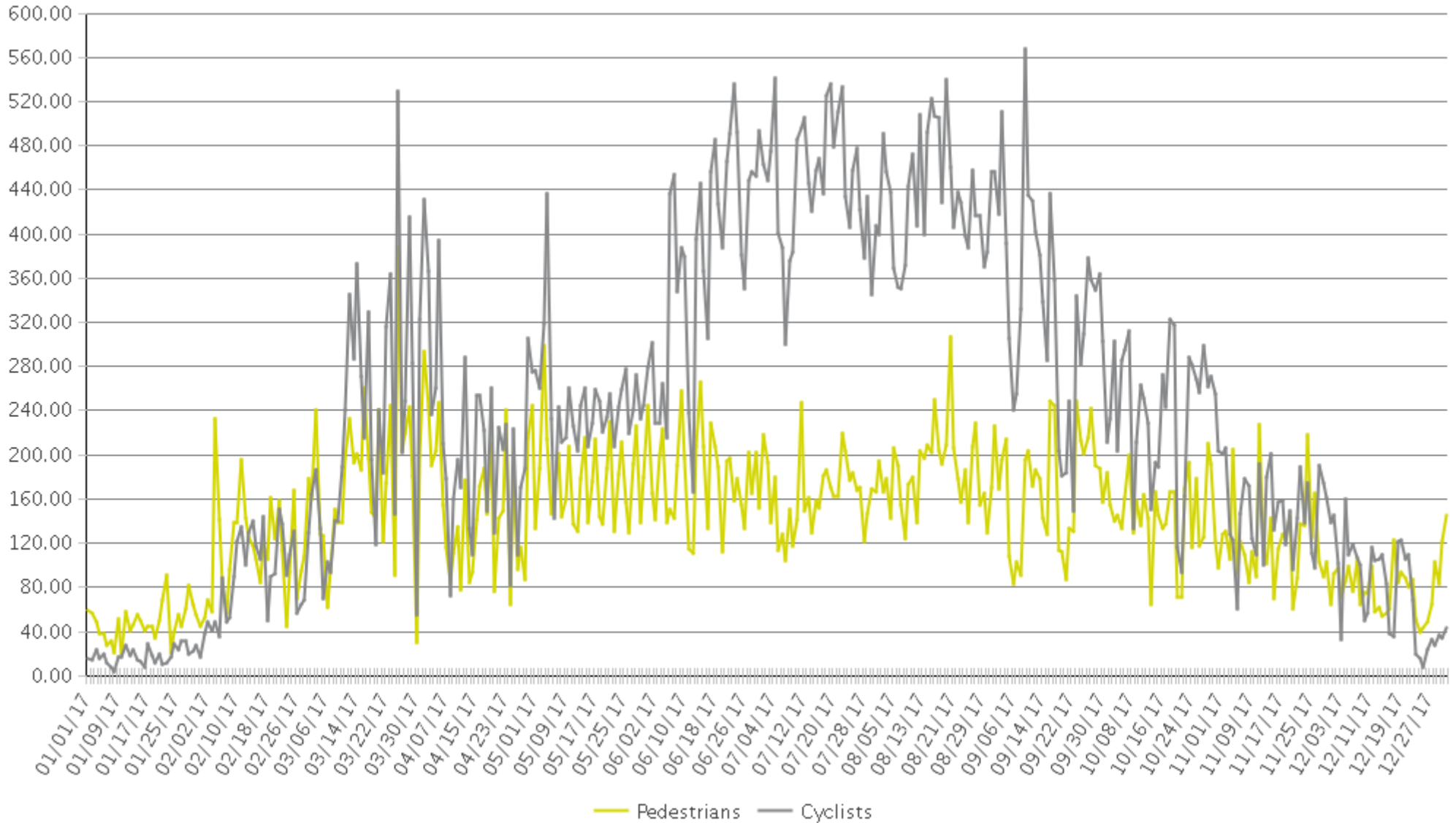
IN: In = West

OUT: Out = East



Boise River Greenbelt - Trestle Bridge

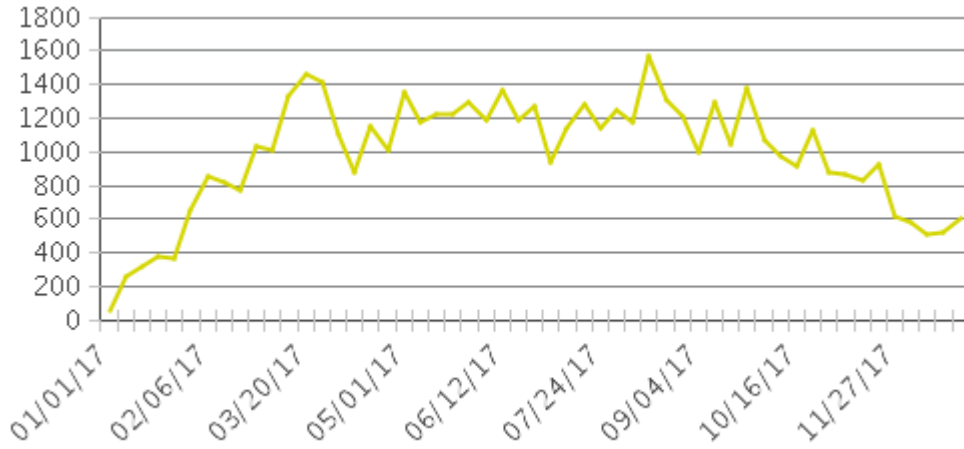
Period Analyzed: Sunday, January 01, 2017 to Sunday, December 31, 2017



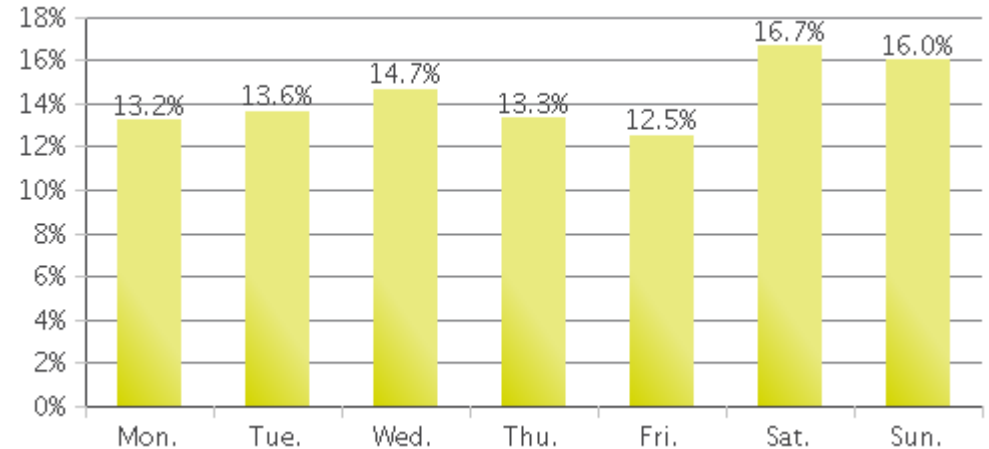
Boise - Trestle Bridge (Pedestrians)

Period Analyzed: Sunday, January 01, 2017 to Sunday, December 31, 2017

Weekly Traffic



Weekly Profile



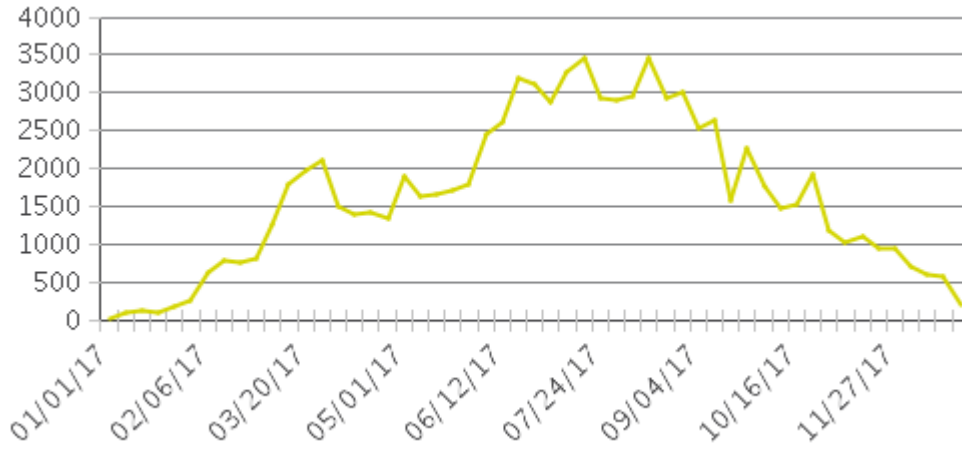
Hourly Profile during Weekdays



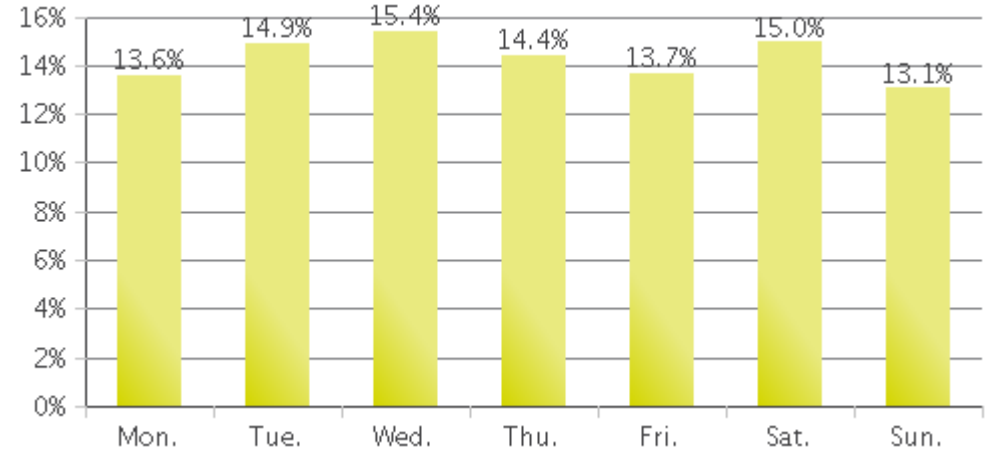
Hourly Profile during the Weekend



Weekly Traffic



Weekly Profile



Hourly Profile during Weekdays



Hourly Profile during the Weekend

