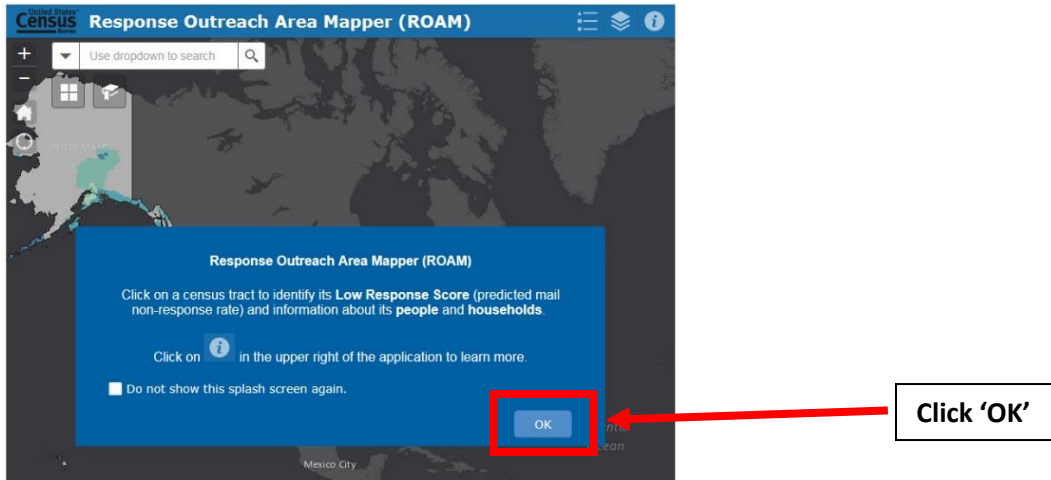
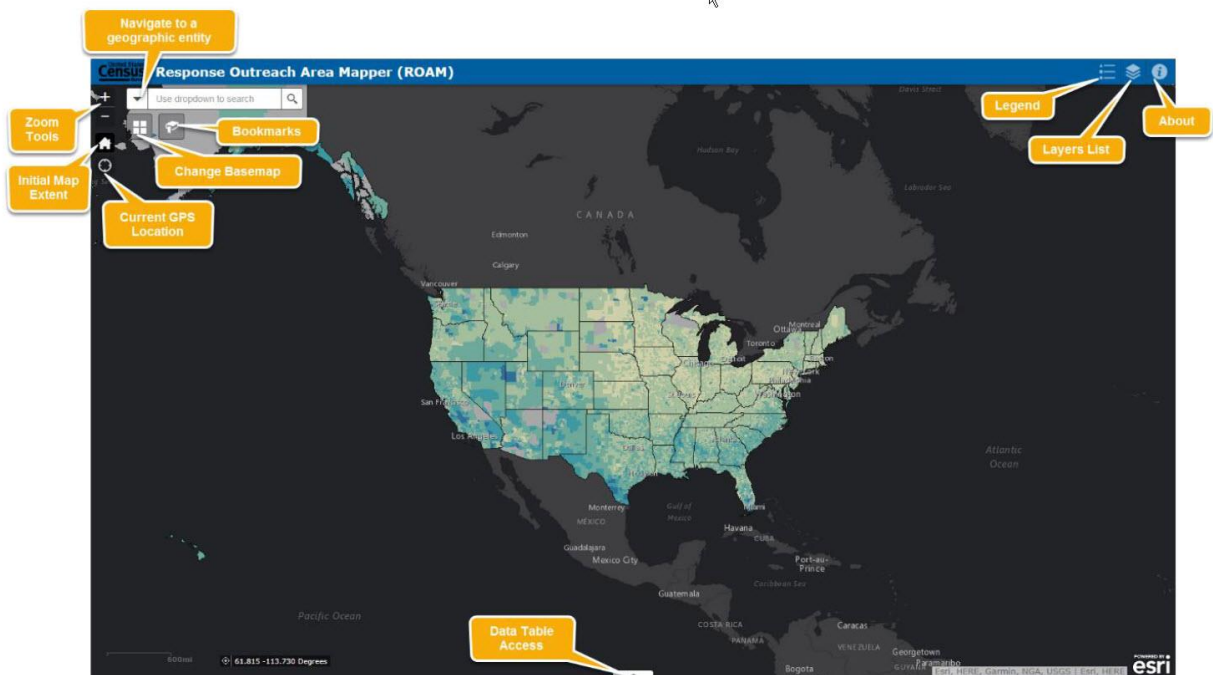


## Example Using Response Outreach Area Mapper (ROAM)

- To get started, go to [www.census.gov/ROAM](http://www.census.gov/ROAM)



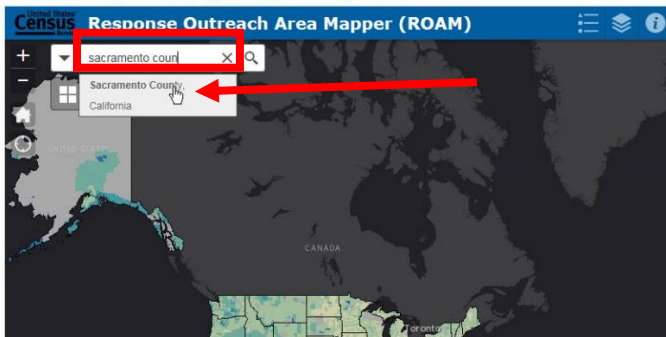
- Buttons and Features of the Application



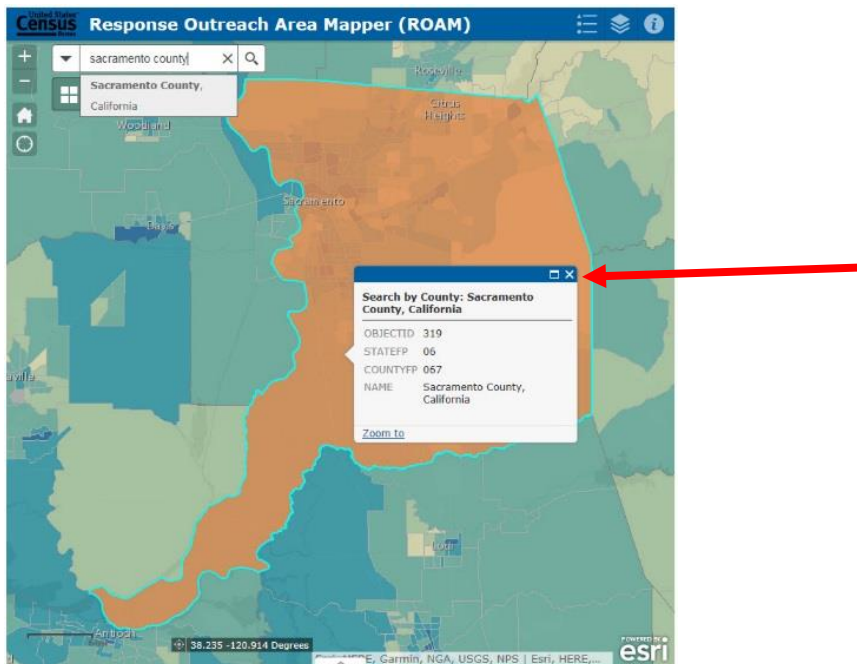
- Use Drop-down menu to select a geography (in this example, select 'County')



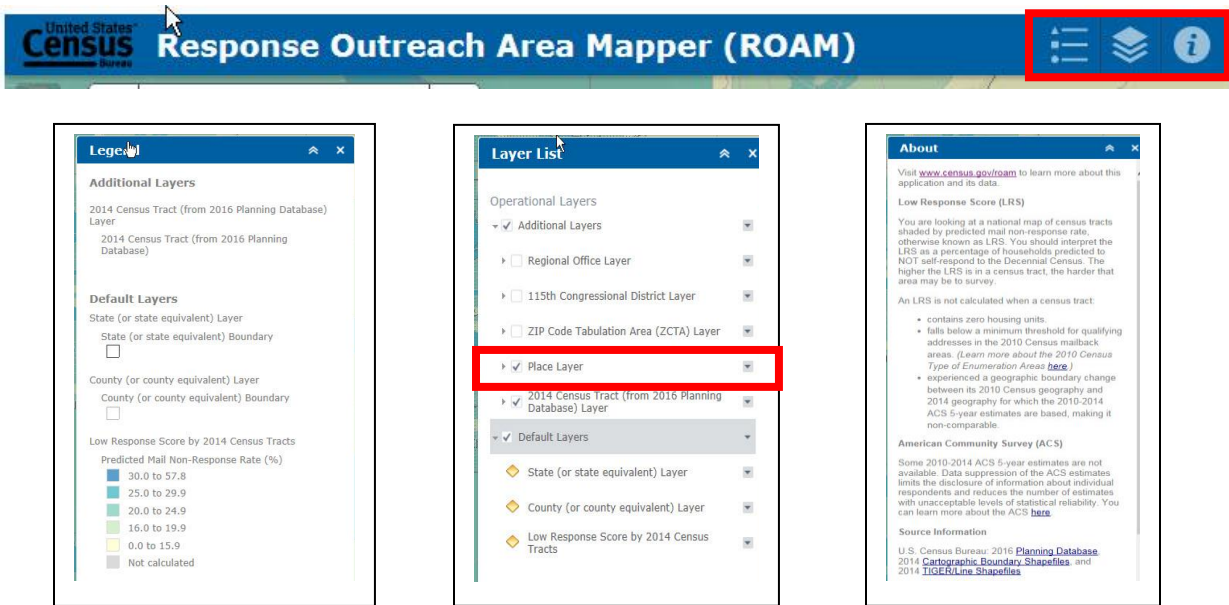
- In the text box, type the name of a geography (in this example, type 'Sacramento County')



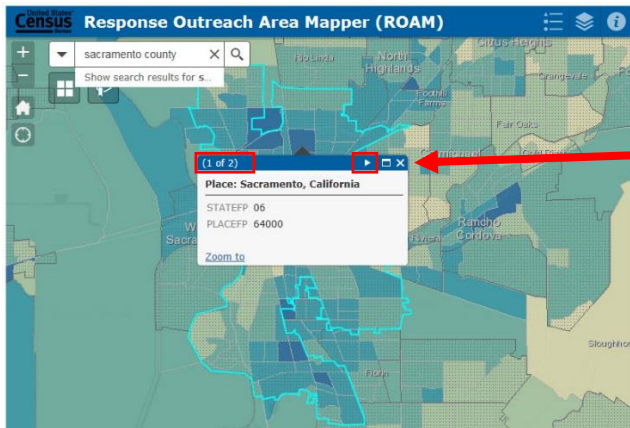
- The Selected area is highlighted. Click 'X' to close box and view/access data.



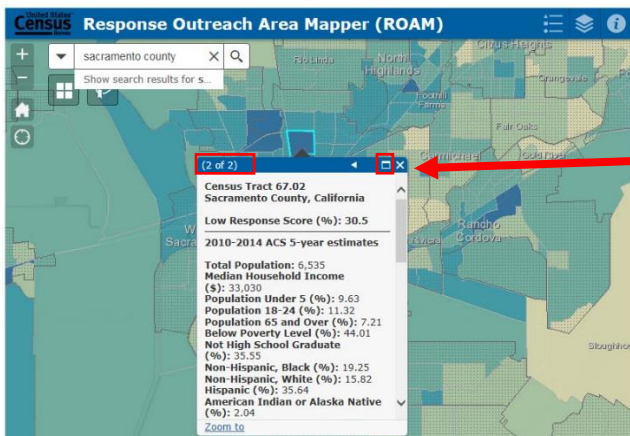
- Tools. Click Layer List and Select 'Place Layer' to view city/town layers on the map.



- Zoom-in to view a city (place). Click on a census tract to view information and data.
- Click the right arrow to view census tract data.

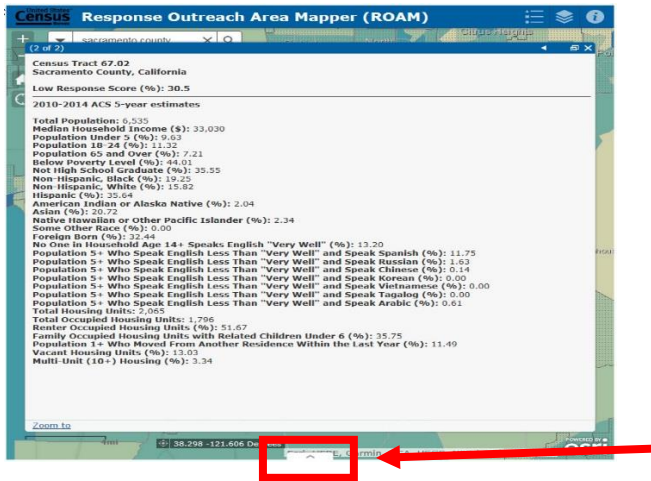


When not zoomed into a particular census tract, multiple selections will appear. In this example, two geographies appear: (1 of 2) for Sacramento City and (2 of 2) for the selected census tract. Data is only provided at the census tract level.



To Expand the View, Click the Window Icon

- To view data and download data for one or more census tracts, click the arrow at bottom of screen.



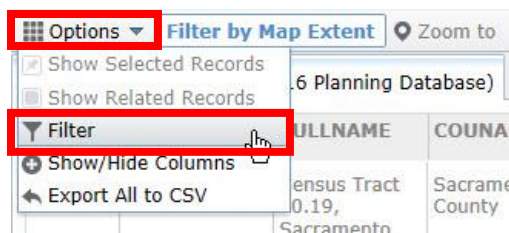
- Scroll Right to view Low Response column. Click column header to sort in ascending/descending order.



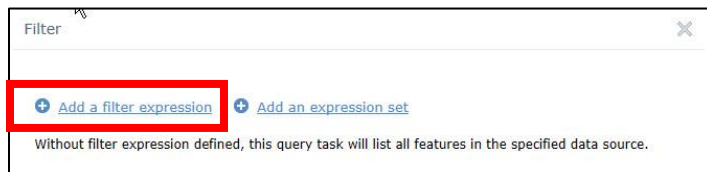
**Note: The system will provide data for all the census tracts that appear on your screen. Use the zoom tool to increase or decrease the number of census tracts available.**

Steps to filter and view data for census tracts with Low Response Scores of 30 and Higher:

- Click 'Options' and 'Filter'



- Click 'Add a Filter Expression'



- Select 'Low Response Score' / 'Is at Least' / '30'. Then click 'Ok'



- To download data, Click 'Options' and 'Export All to CSV'

