

# Treasure Valley Online Incident Detour Map

## User Summary

The objective of the Online Incident Detour Map is to provide the transportation and emergency response agencies easy access to possible detours in response to a planned event or unexpected incident. This User Summary provides users with a brief explanation of how to access and use the Online Incident Detour Map. For more information, please refer to the Treasure Valley Incident Management Operations Manual and Detour Route Plan – Update 2017 (dated December 29, 2017).

COMPASS developed a GIS-based database of the detour routes and a web-based approach to access them. It was important to provide various methods for the agencies to access the detour routes. The following three methods are available to any interested agency:

1. Web-accessible, GIS map-based listing and display of the detour routes. The Online Incident Detour Map is available through the COMPASS website [www.compassidaho.org](http://www.compassidaho.org), under the 'Find It Fast' drop down.
2. GIS database of the detour routes that can be integrated with existing management systems.
3. PDFs of specific detour routes that can be accessed for viewing or printing. These are available separately or can be accessed from the web link.

The online version has all the possible detour routes overlaid on an interactive map. The user can zoom in and out and pan left or right to find the area they are interested in. Detour route map examples and a brief description of how to use the online version is provided below.

### Detour Route Map Examples

Each "segment" denotes a section of roadway that is blocked or closed. Within a "segment" typically four detours are identified (eastbound, westbound, primary, secondary). An example of detour options for a blocked segment between Meridian and Eagle Roads is shown below in Figure 1. The following are some pertinent information to help read the map.

- The dashed black line indicates where the blockage/closure is located
- The dark purple heavy line is the eastbound primary detour
- The light purple line is the eastbound secondary detour
- The dark blue heavy line is the westbound primary detour
- The light blue line is the westbound secondary detour
- Traffic control devices such as intersection signals, hawk signals, stop signs are shown
- Fire stations and hospitals are also shown on the map
- Locations of the dynamic message signs are also indicated
- The tab "Link to Route Mapbook" (when clicked) will take you to the PDF version of all the detour routes. The user can view the detours and print the ones they are interested in.

All this information is shown on the maps to assist the transportation management or emergency response agency to best determine the detour route that matches the given the circumstances.



## 1.1. How To Use The Online Version

The Online Incident Detour Map shows all the detours when it is first opened. A detour selection tool was developed to help users quickly and easily find the area and detour they are interested in. Figure 2 is a screenshot of the 'Select Detour' tool. The user can pick (from a dropdown box) either "Detour description" or "Route number" to help them find the right location and possible detours to choose from.

The box will autofill after the user begins typing. Figure 3 illustrates an example of a detour description beginning with "I-84." A list is provided in alphabetical order of all detours on I-84. The user can then select the interchange they are interested in from the list below and the map is refocused and zoomed to that location displaying the possible detour routes.

Figure 4 shows the results from selecting "I-84, Meridian Rd IC to Eagle Rd IC East" and then clicking "Apply." The user can click on either of the detours to get a PDF version from the Mapbook. Notice the icons – traffic control and other informational items – the user can use these to help them choose the best detour route given the conditions. If this is not the correct location, the user can go back to the Select Detour tool and select a new location. The reset button will start the process over as though the user had just entered the map – showing all the detours in the most zoomed out view.

User feedback is essential to further refinements and suggested additional features to help make this a truly useful incident management tool. As agencies use the Online Incident Detour Map, they are encouraged to provide COMPASS with their comments and input for improvement.

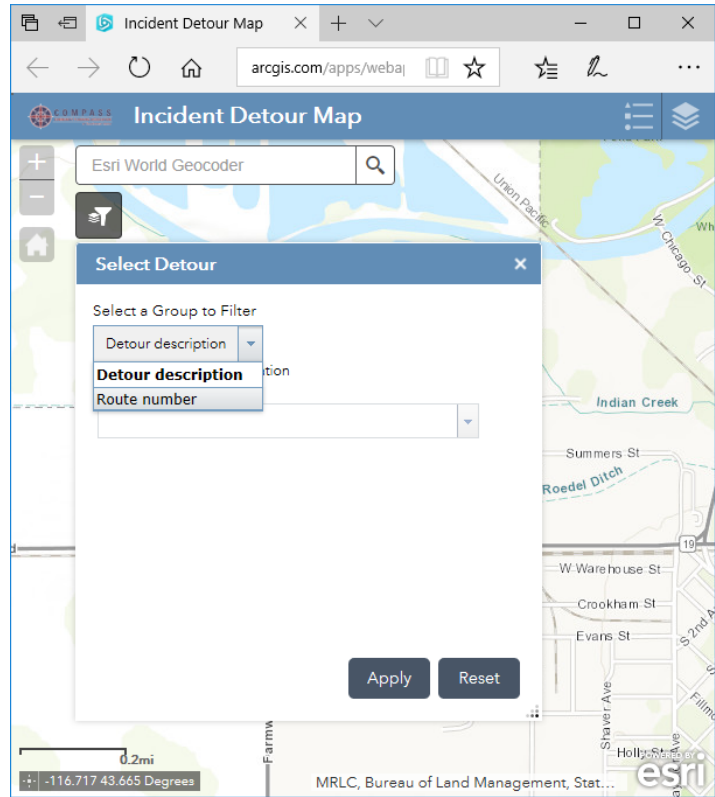


Figure 2. Select Detour Tool Display

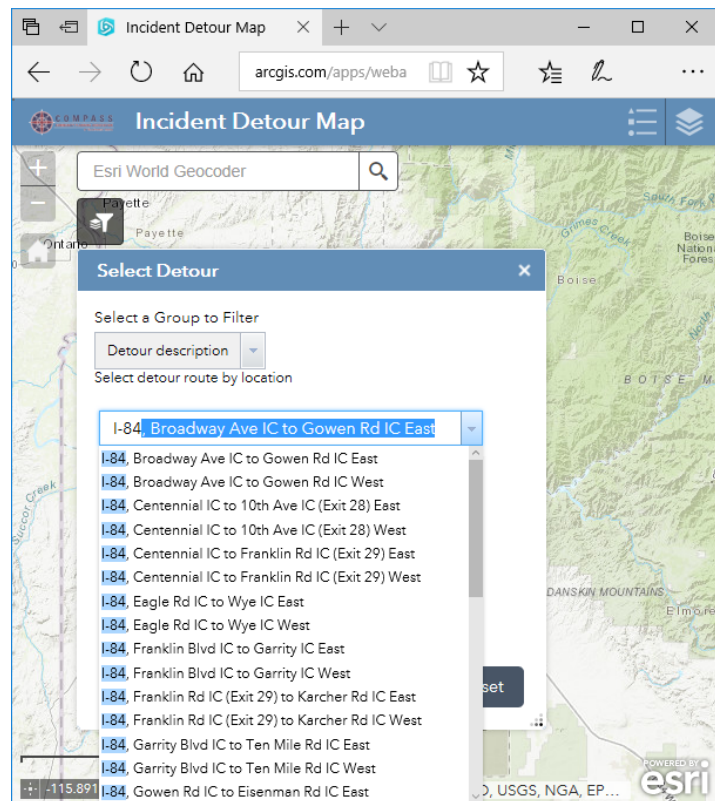
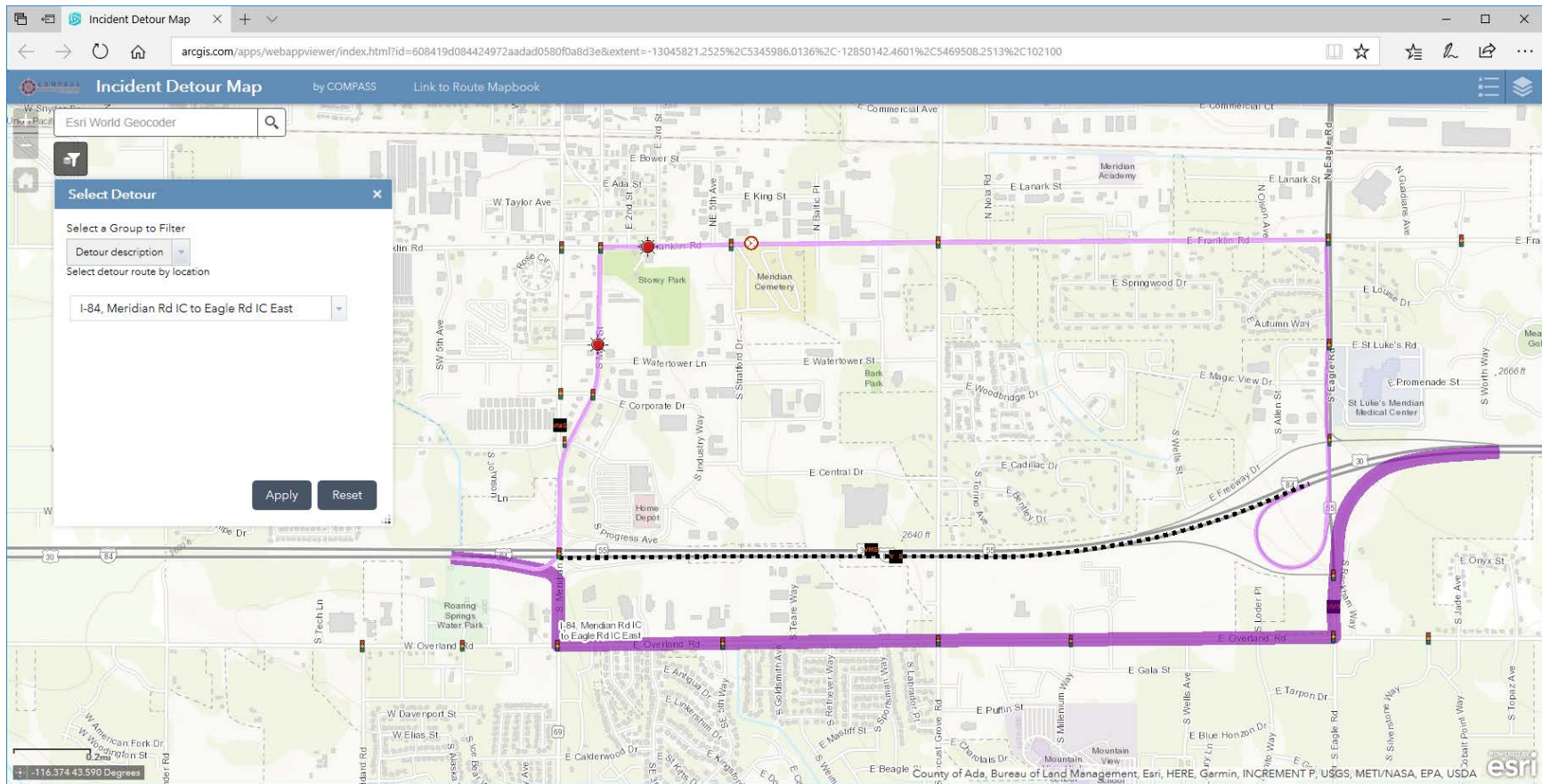


Figure 3. Detour Description Example



**Figure 4. I-84, Meridian Rd IC to Eagle Rd IC East Primary and Secondary detours**